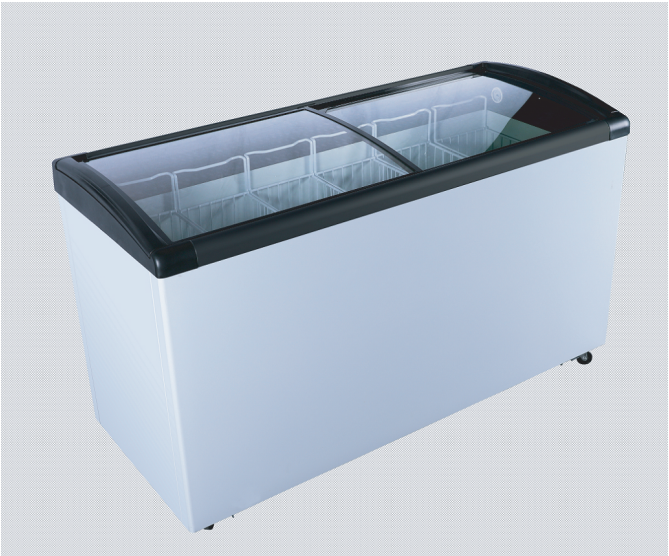


# Curved Glass Ice Cream Freezer



**New and Improved Interior Feature**  
As of April 2026 all models with have painted metal interior!



Model	Size	Refrigerant
CA-166A	4.0 Cu-Ft	R290
CA-266A	6.7 Cu-Ft	R290
CA-296A	7.6 Cu-Ft	R290
CA-366A	9.3 Cu-Ft	R290

### STANDARD FEATURES

- CFC free refrigerant and 2.4" foam insulation
- L.E.D. Interior lighting for better viewing
- Dial Thermostat adjust to -15°F to 8°F
- Drainage is in rear, easy to collect water
- Fast freeze time
- 2 Curved Slide-Top LOW-E Tempered Glass lid for easy view. Door locks & keys included.
- Low noise level
- Internal coved corners, easy to clean
- Baskets: removable PVC coated baskets organize items easily
- Supplied with 4 large swivel casters
- Manual Defrost
- Uses R290 Refrigerant, which is eco-friendly and more efficient
- Warranty: 1 years parts and labor



CONFORMS TO UL STD.NO. 60335-2-89

CERTIFIED TO CSA STD. C22.2 NO. 60335-2-89

Intertek  
3133249

Intertek  
3133249

CONFORMS TO NSF STD.7

\*Not suitable for installation in a non-commercial or residential applications.

Items	Description
External top/side	Curved Glass Sliding Door
Door	LOW-E Tempered Glass w/Lock
External back	White Precoated Aluminum
Cabinet internal	Painted Metal
Internal floor	Painted Metal
Insulation	2.4" foam
Lighting	Interior lighting

Items	Description
Temperature control	Mechanical 1 to 7 is the coldest
Comply to standard	ANSI / NSF-7
Refrigerating system	Capillary tube
Refrigerant	R290
Temperature	-15°F to 8°F
Evaporator/Condenser	Aluminum + Copper
Condensing unit	Side mount

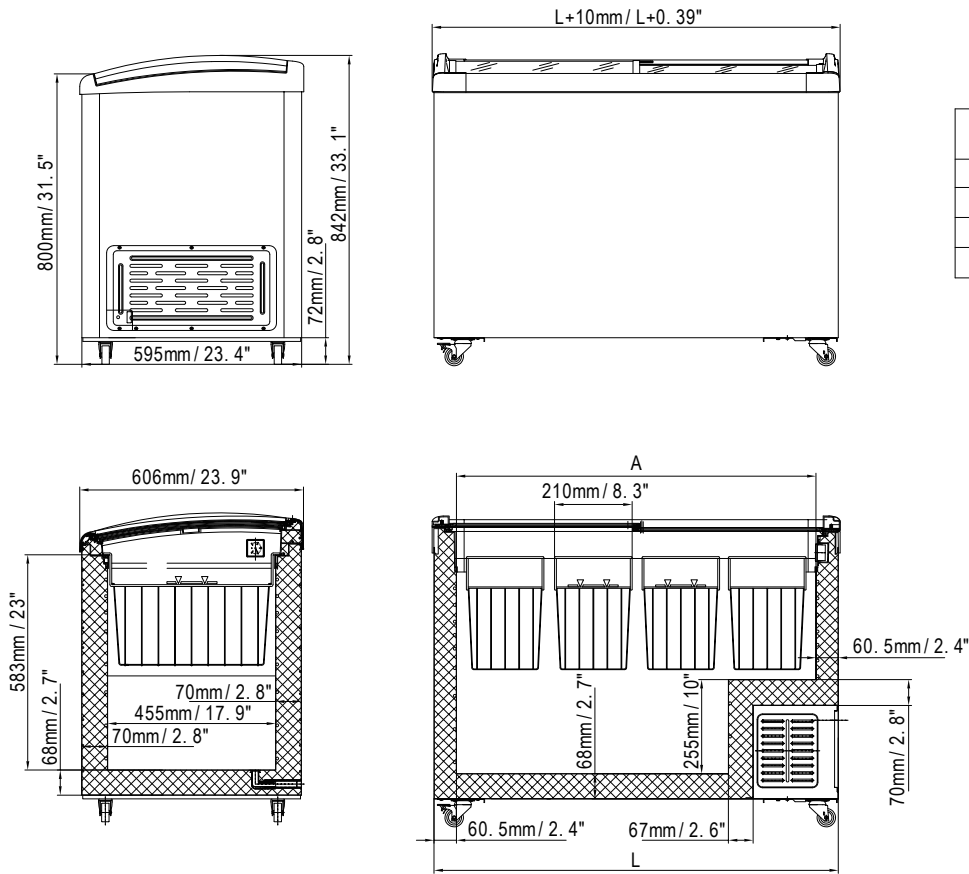
Customer Service (704) 900-2068  
Email: greatfood@entree.biz Website: www.entree.biz

FREEZERS



# DETAILS AND DIMENSIONS

## Schematic Drawing



Model No.	L (Body width)	A (inner width)
CA-166A	770mm/30.3"	649mm/25.6"
CA-266A	1095mm/43.1"	974mm/38.3"
CA-296A	1205mm/47.4"	1084mm/42.7"
CA-366A	1425mm/56.1"	1304mm/51.3"

Model	# of Doors	# of Baskets	Storage CAP (Cu-ft)	Cabinet Dim (in)			HP	Voltage /Hz /ph	Amp	NEMA Plug	Cord Lgth (ft)	Net/ Crated Weight
				W	D	H						
CA-166A	2	3	4	30.3	23.4	33.1	1/4	115/60/1	2.0	5-15P	6	95/108
CA-266A	2	4	6.7	43.1	23.4	33.1	1/3	115/60/1	2.5	5-15P	6	117/132
CA-296A	2	5	7.6	47.4	23.9	33.1	2/5	115/60/1	3.0	5-15P	6	128/143
CA-366A	2	6	9.3	56.1	23.9	33.1	2/5	115/60/1	3.0	5-15P	6	148/165