

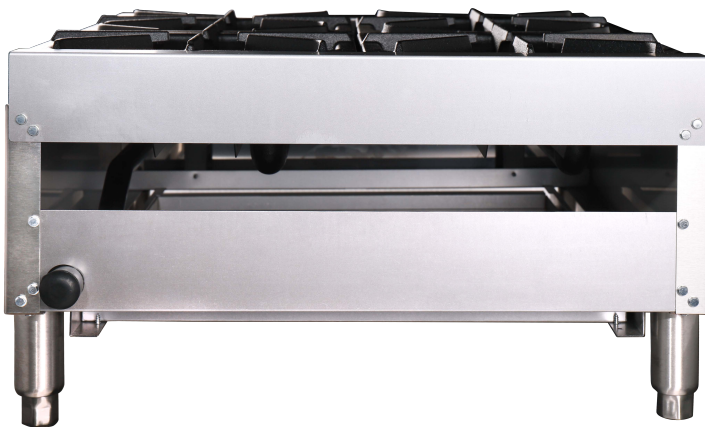


## COMMERCIAL MEDIUM DUTY GAS COUNTERTOP HOT PLATE

**SHP-2429 SHOWN**



**REAR VIEW OF SHP-2429**



## Features

- Medium Duty counter top burners
- Key components have CSA/ETL certificate
- 4" adjustable stainless-steel legs (removed for packaging to prevent concealed damage and lower shipping costs.)
- Equipped with convertible appliance regulator (Maximum pressure ½ P.S.I.)
- Gas conversion kit shipped standard, to convert to appropriate incoming gas.
- Heavy Duty 12" square cast iron lift off top grates for easy cleaning
- Full width crumb tray easily removed for cleaning.
- Infinite valve control
- 3/4" NPT Rear gas connection

Warranty: Solaris's exclusive 1 year parts and labor FUSS warranty takes effect from date of purchase.

**\*Not suitable for installation in a non-commercial or residential applications.**

Customer Service (704) 900-2068  
Email: [solaris@entree.biz](mailto:solaris@entree.biz)  
Website: [www.entree.biz/solaris](http://www.entree.biz/solaris)



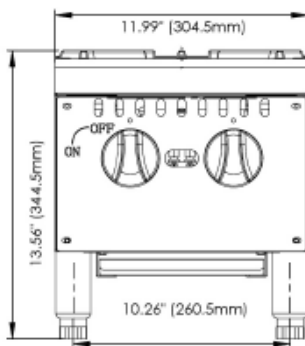


# COMMERCIAL MEDIUM DUTY GAS COUNTERTOP HOT PLATE

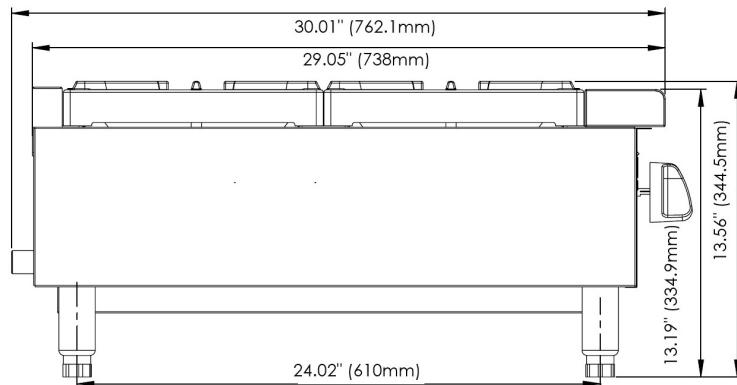
A convertible 3/4" NPT appliance pressure regulator is provided with this unit and set for:  
Natural Gas 4.0" W.C.  
Propane Gas 10.0" W.C.

Rear Gas Connections is 3/4" NPT  
Recommended incoming pressure:  
Natural Gas 5.0" W.C. with not more than a 1/2" W.C. pressure drop  
LP Gas 11.0" W.C. with not more than a 1/2" W.C. pressure drop

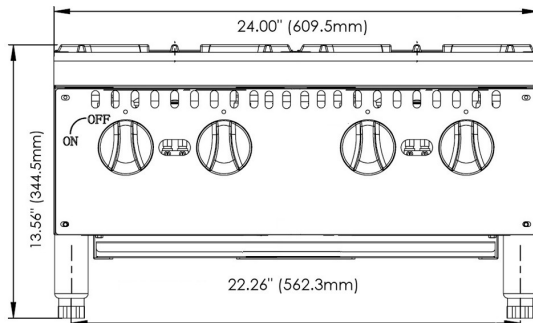
SHP-1229



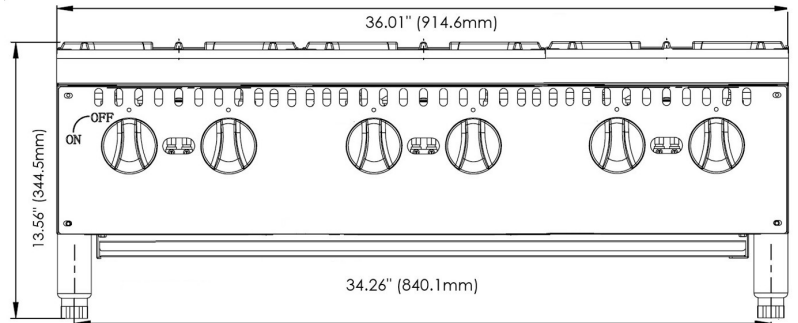
Side View All



SHP-2429



SHP-3629



COMMERCIAL COOKING

Model	# of Burners	Total BTU's	Cooking Surface		Product Dimensions			Net Weight (lbs.)	Shipping Dimensions			Gross Weight (lbs.)
			Width	Depth	Width	Depth	Height		Width	Depth	Height	
SHP-1229	2	60,000	11.93"	23.86"	11.99"	30.01"	13.56"	65	17.72"	34.45"	16.73"	95
SHP-2429	4	120,000	23.86"	23.86"	24.00"	30.01"	13.56"	113	29.13"	35.04"	16.73"	156
SHP-3629	6	180,000	35.79"	23.86"	36.01"	30.01"	13.56"	170	41.34"	35.83"	16.73"	222

**\*Not suitable for installation in a non-commercial or residential applications.**

Customer Service (704) 900-2068  
Email: solaris@entree.biz  
Website: www.entree.biz/solaris

As continued product improvement is a policy of Solaris, specifications are subject to change without notice.

FORM SHP MED REV 20260204

