



COMMERCIAL HEAVY DUTY GAS COUNTERTOP GRIDDLE

SHDG-2433 SHOWN



The Solaris Heavy Duty Gas Counter Griddle is available in both Manual or Thermostatic Control.

The efficient 3/4" griddle plate offers the thickness of even heat distribution along with Solaris's thermostatically controlled griddle "quick on" turning the burners on when the probes sense temperature drop. This gives you important quick temperature recovery when cooking. The result is faster cook times, higher product yield — you serve a higher quality, moist product.

It is available in 24", 36" and large 48" widths and covers complete parts and labor 1 year warranty. Units are shipped for natural gas but are easily converted to LP (propane) gas with the LP conversion kit that is included.

All Griddles carry ETL gas and sanitation approvals that pass US gas and sanitation requirements for use in restaurants.

Warranty: Solaris's exclusive 1 year parts and labor FUSS warranty takes effect from date of purchase.

***Not suitable for installation in a non-commercial or residential applications.**

Model	# of Burners
SHDG-2433 / SHDGT-2433	2
SHDG-3633 / SHDGT-3633	3
SHDG-4833 / SHDGT-4833	4

Features

- Key components have CSA/ETL certificate
- 4" adjustable stainless-steel legs (removed for packaging to prevent concealed damage and lower shipping costs.)
- Equipped with convertible appliance regulator (Maximum pressure 1/2 P.S.I.)
- Gas conversion kit shipped standard, to convert to appropriate incoming gas.
- 3/4" Thick hot rolled steel plate, quick recovery and even heating.
- 4" Back and Side splash guards
- Grease container easily removed for cleaning.
- Infinite valve control

COMMERCIAL COOKING

Customer Service (704) 900-2068
Email: solaris@entree.biz
Website: www.entree.biz/solaris





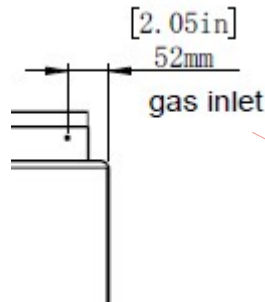
COMMERCIAL HEAVY DUTY GAS COUNTERTOP GRIDDLE

A convertible 3/4" NPT appliance pressure regulator is provided with this unit and set for:
Natural Gas 4.0" W.C.
Propane Gas 10.0" W.C.

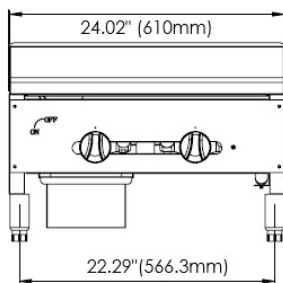
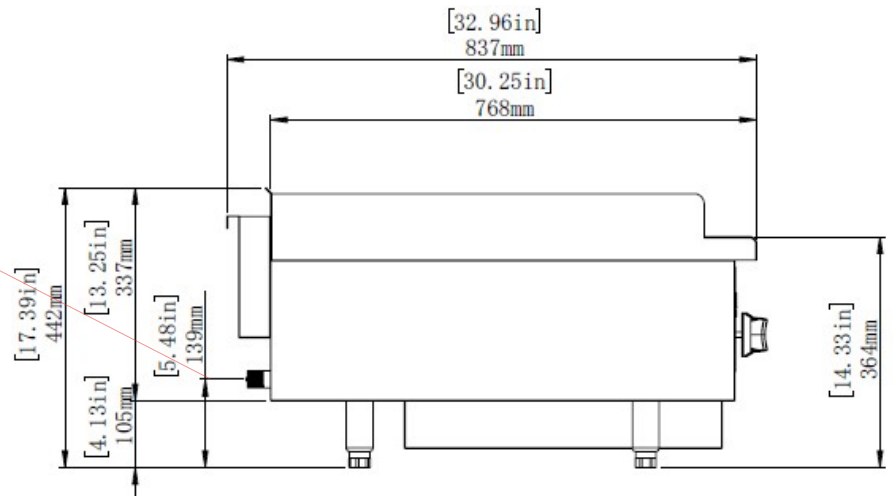
Rear Gas Connections is 3/4" NPT
Recommended incoming pressure:

Natural Gas 5.0" W.C. with not more than a 1/2" W.C. pressure drop
LP Gas 11.0" W.C. with not more than a 1/2" W.C. pressure drop

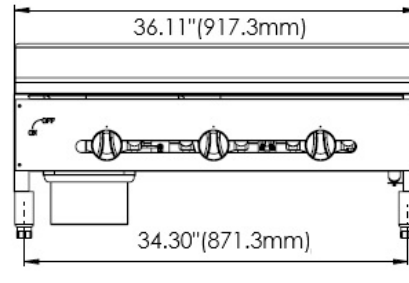
Gas connection:
From the right rear
side of all models



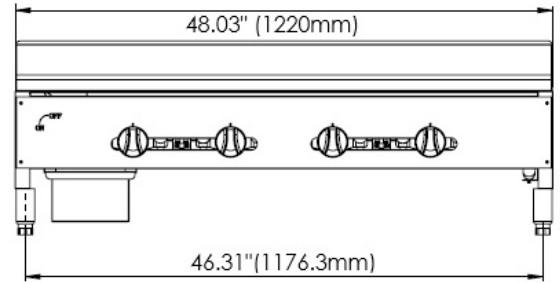
Side view for all



SHDG/T-2433



SHDG/T-3633



SHDG/T-4833

Model	# of Burners	Total BTU's	Cooking Surface		Product Dimensions			Net Weight (lbs.)	Shipping Dimensions			Gross Weight (lbs.)
			Width	Depth	Width	Depth	Height		Width	Depth	Height	
SHDG/T-2433	2	60,000	23.86"	24.09"	24.02"	32.96"	17.39"	236	28.35"	37.00"	20.47"	278
SHDG/T-3633	3	90,000	35.87"	24.09"	36.11"	32.96"	17.39"	335	40.55"	37.00"	20.47"	382
SHDG/T-4833	4	120,000	47.87"	24.09"	48.03"	32.96"	17.39"	376	52.76"	37.00"	20.47"	428

***Not suitable for installation in a non-commercial or residential applications.**

Customer Service (704) 900-2068
Email: solaris@entree.biz
Website: www.entree.biz/solaris

As continued product improvement is a policy of Solaris, specifications are subject to change without notice.

FORM SHDG/T HD Rev 20260203



COMMERCIAL COOKING