



PARTS LIST

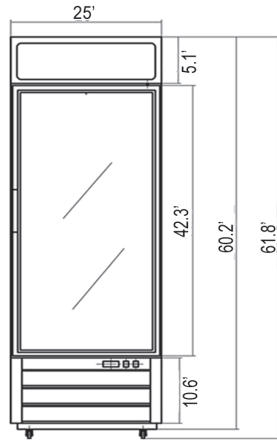
FOR MERCHANDISER MODELS: EGD-1DR-12-HC,
EGD-1DF-12-HC, EGD-1DR-16-HC, EGD-1DR-23-ES-HC, EGD-1DF-23-HC,
EGD-1DR-26-HC, EGD-1DF-26-HC, EGD-2DR-36-HC, EGD-2DF-36-HC,
EGD-2DR-47-HC, EGD-2DR-48-HC, EGD-2DF-48-HC



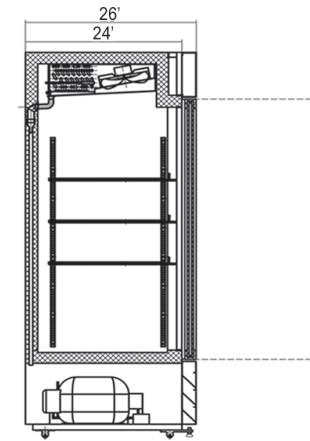
For Parts please Call (704) 900-2068

Revision Date: February 20, 2025

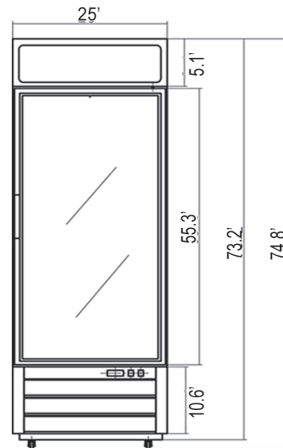
EGD-1DR-12-HC / EGD-1DF-12-HC



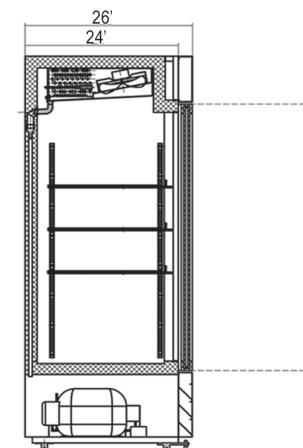
EGD-1DR-12-HC / EGD-1DF-12-HC



EGD-1DR-16-HC / EGD-1DF-16-HC

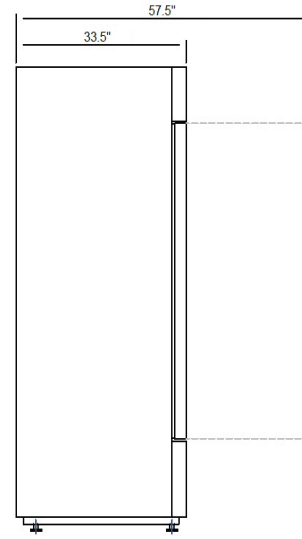
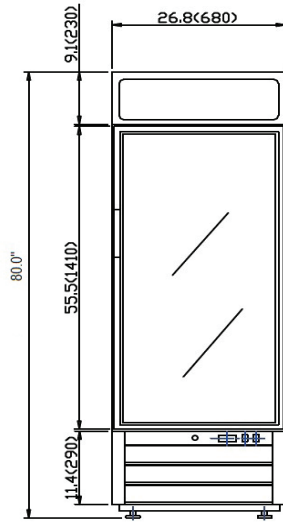


EGD-1DR-16-HC / EGD-1DF-16-HC

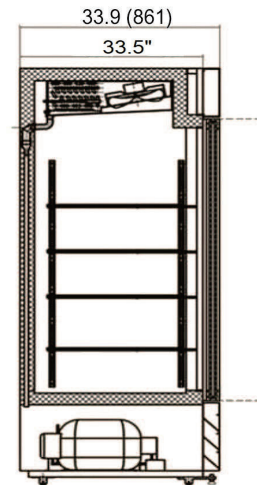
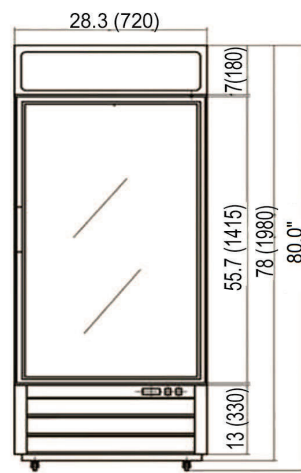


Model	Doors	Shelves	Cabinet Dim (in) External			HP	Voltage /Hz /ph	Amp	NEMA Plug	Cord Lgth (ft)	Crated Weight (lbs)
			W	D	H						
EGD-1DR-12-HC	1	3	25	26	61.8	1/5	115/60/1	3	5-15P	10	254
EGD-1DR-16-HC	1	3	25	26	74.8	1/5	115/60/1	3	5-15P	10	282
EGD-1DF-12-HC	1	3	25	26	61.8	1/2	115/60/1	5	5-15P	10	258
EGD-1DF-16-HC	1	3	25	26	74.8	1/2	115/60/1	5	5-15P	10	289

EGD-1DR-23-HC / EGD-1DF-23-HC



EGD-1DR-26-HC / EGD-1DF-26-HC

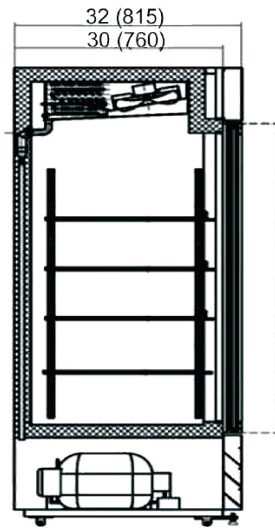
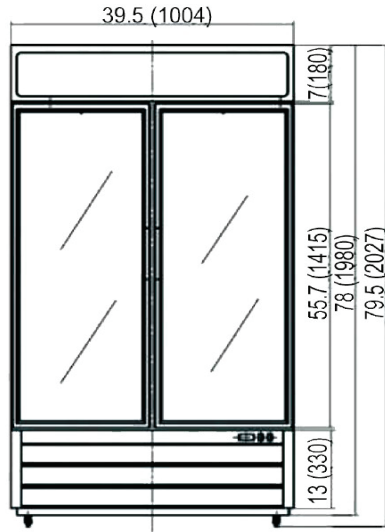


Model	Doors	Shelves	Shelf Size (in)	Cabinet Dim (in) External			HP	Voltage /Hz /ph	Amp	NEMA Plug	Cord Lgth (ft)	Crated Weight (lbs)
				W	D	H						
★ EGD-1DR-23-HC	1	4	28.6 x 24.3	26.8	33.5	80.0	1/5	115/60/1	3.0	5-15P	10	331
EGD-1DR-26-HC	1	4	28.6 x 26.14	28.3	33.9	80.0	1/5	115/60/1	3.0	5-15P	10	345
★ EGD-1DF-23-HC	1	4	28.6 x 24.3	26.8	33.5	80.0	1/2	115/60/1	8.0	5-15P	10	353
EGD-1DF-26-HC	1	4	28.3 x 26.14	28.3	33.9	80.0	1/2	115/60/1	8.0	5-15P	10	360

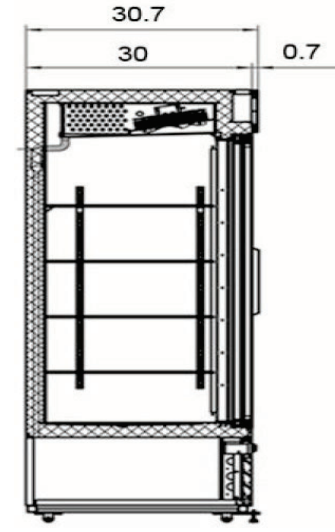


★ Most commonly sold model

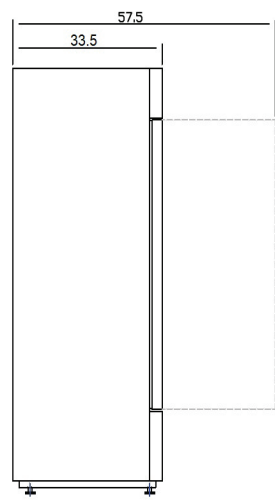
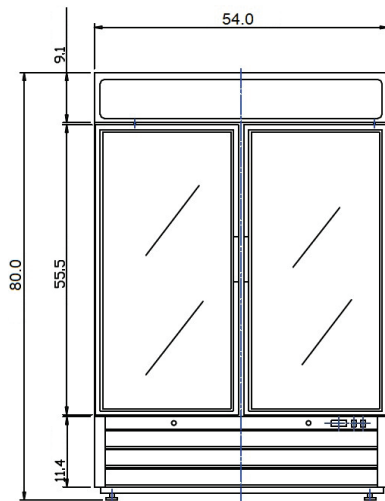
EGD-2DR-36-HC / EGD-2DF-36-HC



EGD-2DR-47-HC SIDE VIEW



EGD-2DR-48-HC / EGD-2DF-48-HC



EGD-2DR-47-HC FRONT VIEW



EGD-2DR-47-HC Sliding Glass Door opening is 20"



Model	Doors	Shelves	Shelf Size (in)	Cabinet Dim (in) External			HP	Voltage /Hz /ph	Amp	NEMA Plug	Cord Lgth (ft)	Crated Weight (lbs)
				W	D	H						
EGD-2DR-36-HC	2	8	16.41 x 24.33	39.5	32.0	79.5	1/5	115/60/1	3.0	5-15P	10	375
EGD-2DR-47-HC	2	8	24.09 x 24.13	54.0	30.7	80.0	1/4	115/60/1	4.5	5-15P	10	540
EGD-2DR-48-HC	2	8	23.15 x 26.14	54.0	33.5	80.0	1/4	115/60/1	4.5	5-15P	10	540
EGD-2DF-36-HC	2	8	16.41 x 24.33	39.5	32.0	79.5	1/2	115/60/1	8.0	5-15P	10	368
EGD-2DF-48-HC	2	8	23.15 x 26.14	54.0	33.5	80.0	1	115/60/1	9.0	5-15P	10	567

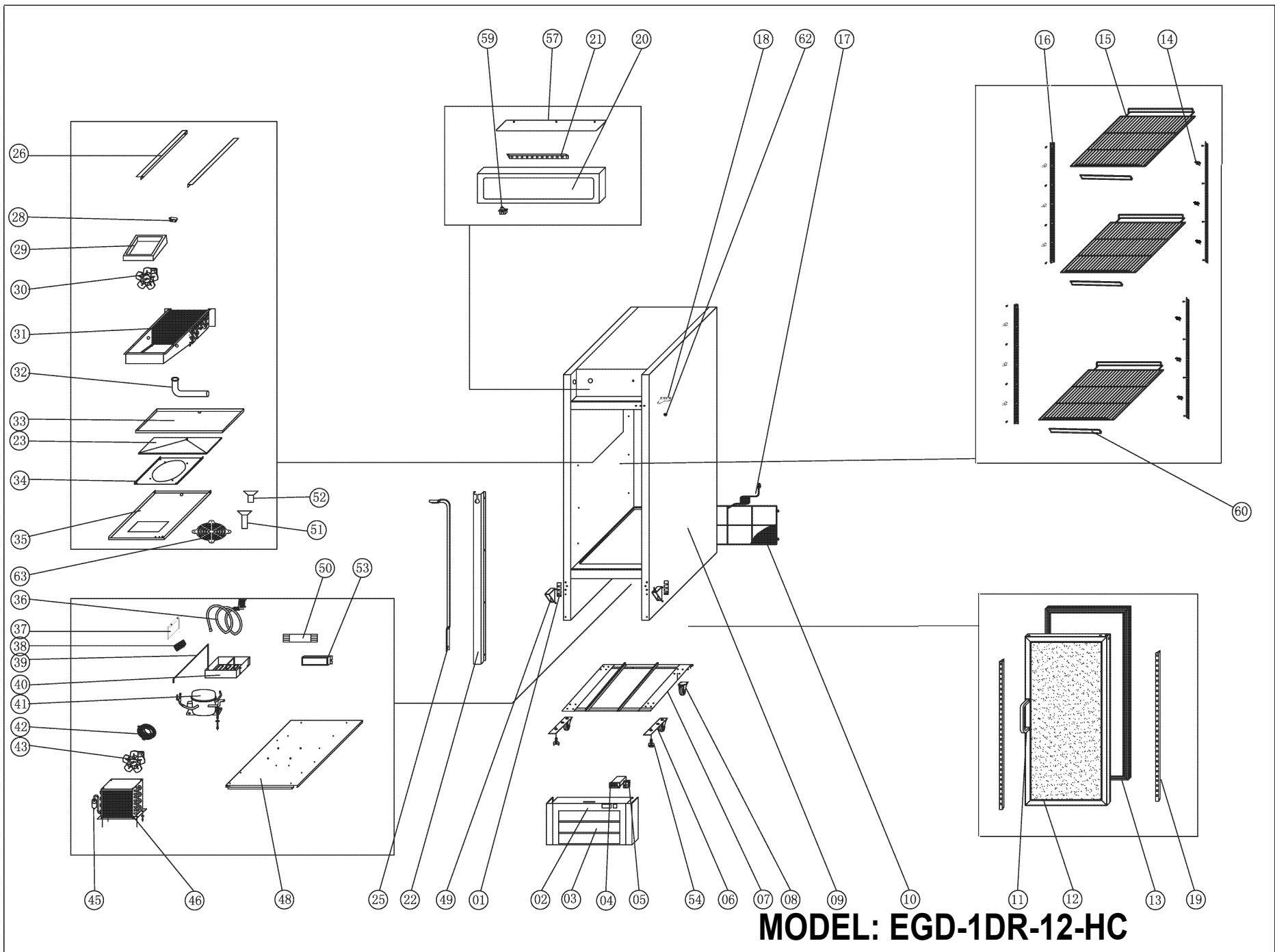
★ Most commonly sold model **EGD-2DR-47-HC is a Sliding Door Model**

SPECIFICATION

SWING DOOR REFRIGERATORS								
MODEL#	V/Hz/Ph	AMPS	STORAGE CAPACITY Cu-ft	HP	BTU	CHARGE OZ	SHIP WEIGHT LBS	NEMA PLUG
EGD-1DR-12-HC & EGD-1DR-12-SI-HC	115/60/1	3	12	1/5	1670	3.0	254	5-15P
EGD-1DR-16-HC & EGD-1DR-16-SI-HC	115/60/1	3	16	1/5	1670	3.0	282	5-15P
EGD-1DR-23-HC & EGD-1DR-23-SI-HC	115/60/1	3	23	1/5	1670	3.0	331	5-15P
EGD-1DR-26-HC & EGD-1DR-26-SI-HC	115/60/1	3	24	1/5	1670	3.0	345	5-15P
EGD-2DR-36-HC & EGD-2DR-36-SI-HC	115/60/1	4.5	36	1/4	2380	3.7	375	5-15P
EGD-2DR-48-HC & EGD-2DR-48-SI-HC	115/60/1	4.5	48	1/4	2380	3.7	540	5-15P
EGD-3DR-70-HC & EGD-3DR-70-SI-HC	115/60/1	7.5	72	1/5	3200	5.29	741	5-15P

SLIDE DOOR REFRIGERATOR								
MODEL#	V/Hz/Ph	AMPS	STORAGE CAPACITY Cu-ft	HP	BTU	CHARGE OZ	SHIP WEIGHT LBS	NEMA PLUG
EGD-2DR-47-HC & EGD-2DR-47-SI-HC	115/60/1	4.5	47	1/4	2380	3.7	540	5-15P

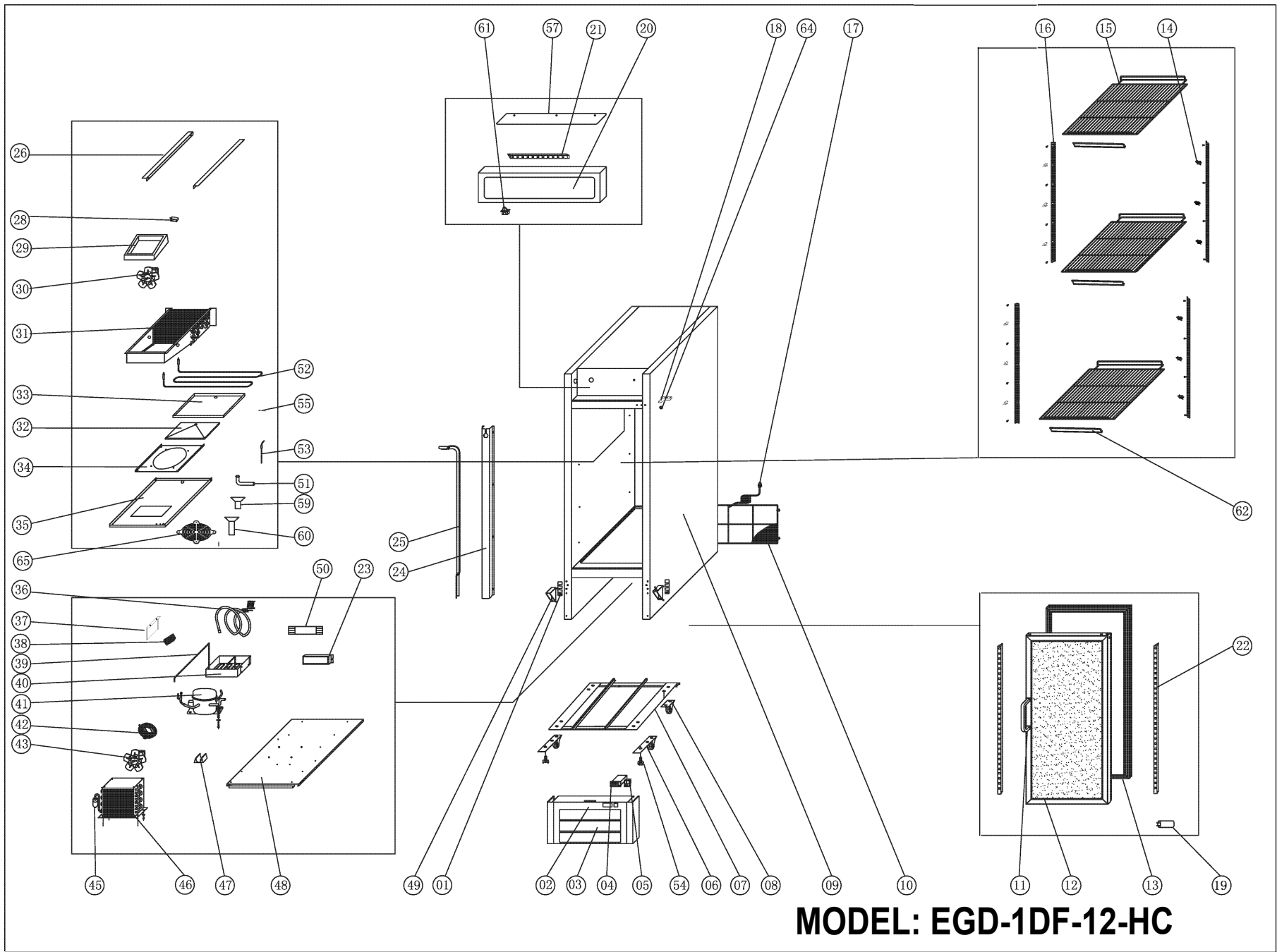
SWING DOOR FREEZERS								
MODEL#	V/Hz/Ph	AMPS	STORAGE CAPACITY Cu-ft	HP	BTU	CHARGE OZ	SHIP WEIGHT LBS	NEMA PLUG
EGD-1DF-12-HC & EGD-1DF-12-SI-HC	115/60/1	5	12	1/2	2000	3.7	258	5-15P
EGD-1DF-16-HC & EGD-1DF-16-SI-HC	115/60/1	5	16	1/2	2000	3.7	289	5-15P
EGD-1DF-23-HC & EGD-1DF-23-SI-HC	115/60/1	8	23	1/2	2000	3.88	353	5-15P
EGD-1DF-26-HC & EGD-1DF-26-SI-HC	115/60/1	8	24	1/2	2000	3.88	360	5-15P
EGD-2DF-36-HC & EGD-2DF-36-SI-HC	115/60/1	9	36	1	3650	5.29	368	5-15P
EGD-2DF-48-HC & EGD-2DF-48-SI-HC	115/60/1	9	48	1	3650	5.29	567	5-15P



MODEL: EGD-1DR-12-HC

Parts List for Model: EGD-1DR-12-HC

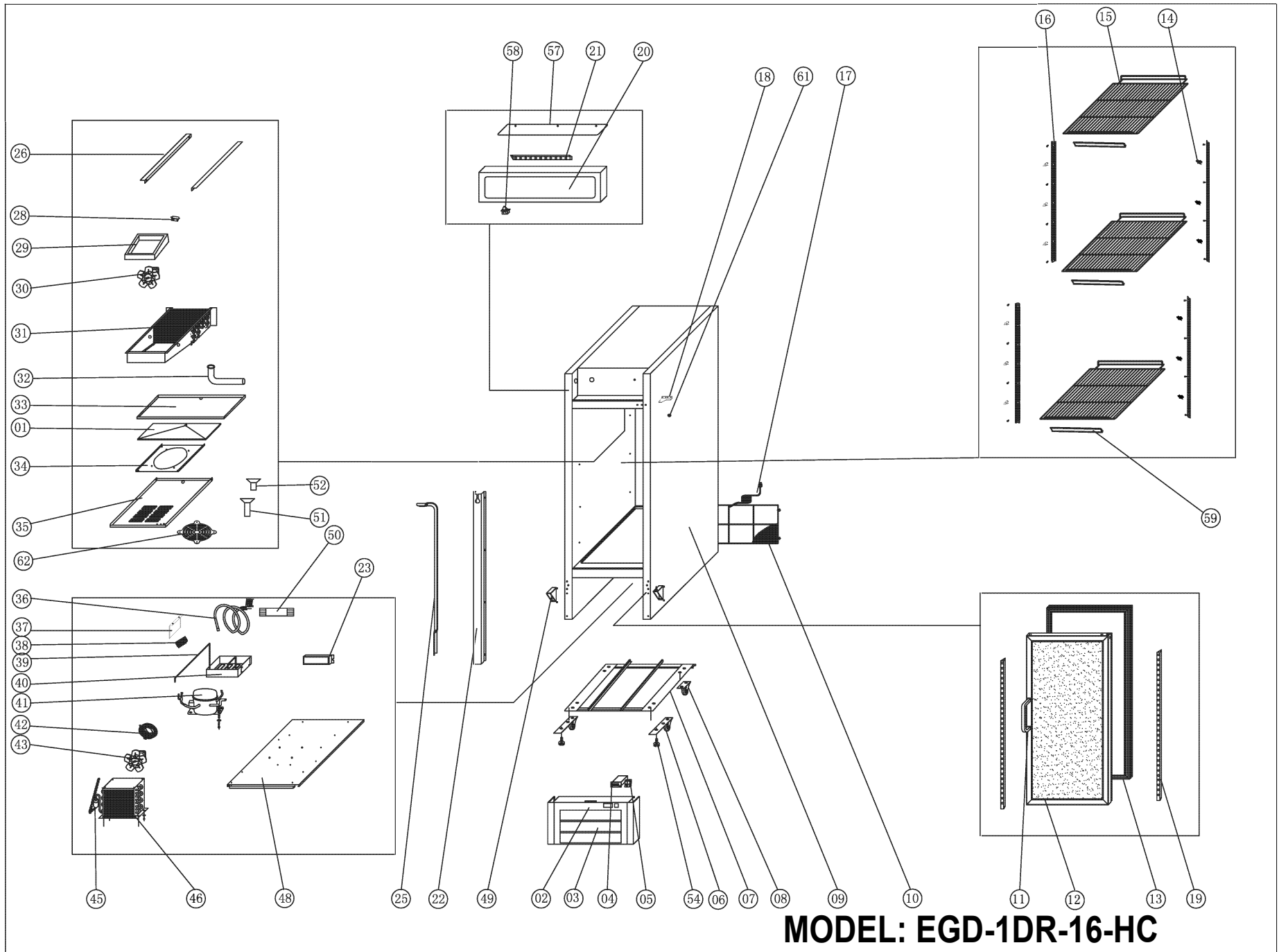
No.	PART #	DESCRIPTION	QTY	No.	PART #	DESCRIPTION	QTY
1	G20045	DOOR SHIM	2	32	H00336	DRAIN JOINT	1
2	HC00357	KEY-DOOR, LOCK (SOLD IN PACK OF TWO)	1	33	HC000681	EVAPORATOR DRAIN PAN	1
3	GDM008751	SHROUD, LOWER FRONT	1	34	NON STOCKING	EVAPORATOR FAN SUPPORT	1
4	H00219-2	CONTROLLER, DIXELL (XR20CX-4R0F1)	1	35	GHC50012-1	EVAPORATOR FAN COVER	1
5	C2194692	LIGHT SWITCH	1	36	HDV0006B	HELIX SUCTION PIPE+CAPILLARY B	1
6	G20037	FRONT WHEEL WITH LEVEL STOP	2	37	NON STOCKING	COVER	1
7	NON STOCKING	SUPPORT PANEL	1	38	H00215	TERMINAL BLOCK, 5 POLE	1
8	BC1316	1" CASTER (REAR WHEEL, FIXED)	2	39	GHC2014	DISCHARGE PIPE	1
9	NON STOCKING	CABINET	1	40	C30013	CONDENSER DRAIN BOX	1
10	G20012-1	COVER, LOWER REAR COMPARTMENT	1	41	HC0001F	COMPRESSOR (EM2X3117U) W/ FILTER DRIER	1
11	HC140028	GLASS DOOR HANDLE	1	41	HC0001K	START KIT FOR EM2X3117U	1
12	H112010687	DOOR, GLASS	1	41	H00301	CAPILLARY TUBE (.055" ID X 196.9" L)	1
13	GHC0021	GASKET (41 1/8" X 23 1/4")	1	42	RD00111	CONDENSER FAN GUARD (V172-34)	1
14	C3234860	PILASTER CLIP	16	43	H00110	CONDENSER FAN MOTOR, (CA27-04/CA01 L-600RPM)	1
15	H00416	SHELF (19.8" X 18")	3	45	H00341	DRIER FILTER	1
16	H04343	PILASTER	2	46	HC0346	CONDENSER COIL	1
17	C2194681	POWER CORD, 18AWG/NEMA 5-15P	1	48	NON STOCKING	CONDENER PANEL	1
18	GHC20040	HINGE, UPPER RIGHT	1	49	GHC20041	HINGE, LOWER RIGHT & LEFT	1
19	GLED001L	LED STRIP (LEFT)	1	49	G00334	HINGE LOWER LEFT	1
19	GLED001R	LED STRIP (RIGHT)	1	50	GLED003	POWER SUPPLY (LD2006, 24VDC 21.6W)	1
20	GHC60112-1	LAMP COVER	1	51	G30002	DRAIN FITTING (FEMALE)	1
21	GLED004	LED STRIP	1	52	G30001	DRAIN PIPE FITTING (MALE)	1
22	NON STOCKING	CHANNEL SUCTION LINE COVER	1	53	G10006	LED POWER SUPPLY (LED-B-13VDC-15W)	1
23	NON STOCKING	PANEL	1	54	G20038	FRONT LEVEL STOP	2
25	HDV003A	VERTICAL SUCTION PIPE+CAPILLARY A	1	57	HGD008448	LAMP COVER PROTECTOR	1
26	NON STOCKING	EVAPORATOR SUPPORT GUIDE L OR R	1	59	HC10015	DOOR SWITCH	1
28	H03335	SENSOR CLIP	1	60	GHC40021	LABEL SUPPORT	3
29	NON STOCKING	AIR GUIDE	1	62	G20043	HINGE AXIS BUSHING	1
30	HC0116-5	EVAPORATOR FAN MOTOR (BLDC L-1200RPM)	1	63	H00127	EVAPORATOR FAN GUARD	1
31	HRC0350-1	EVAPORATOR COIL	1				



MODEL: EGD-1DF-12-HC

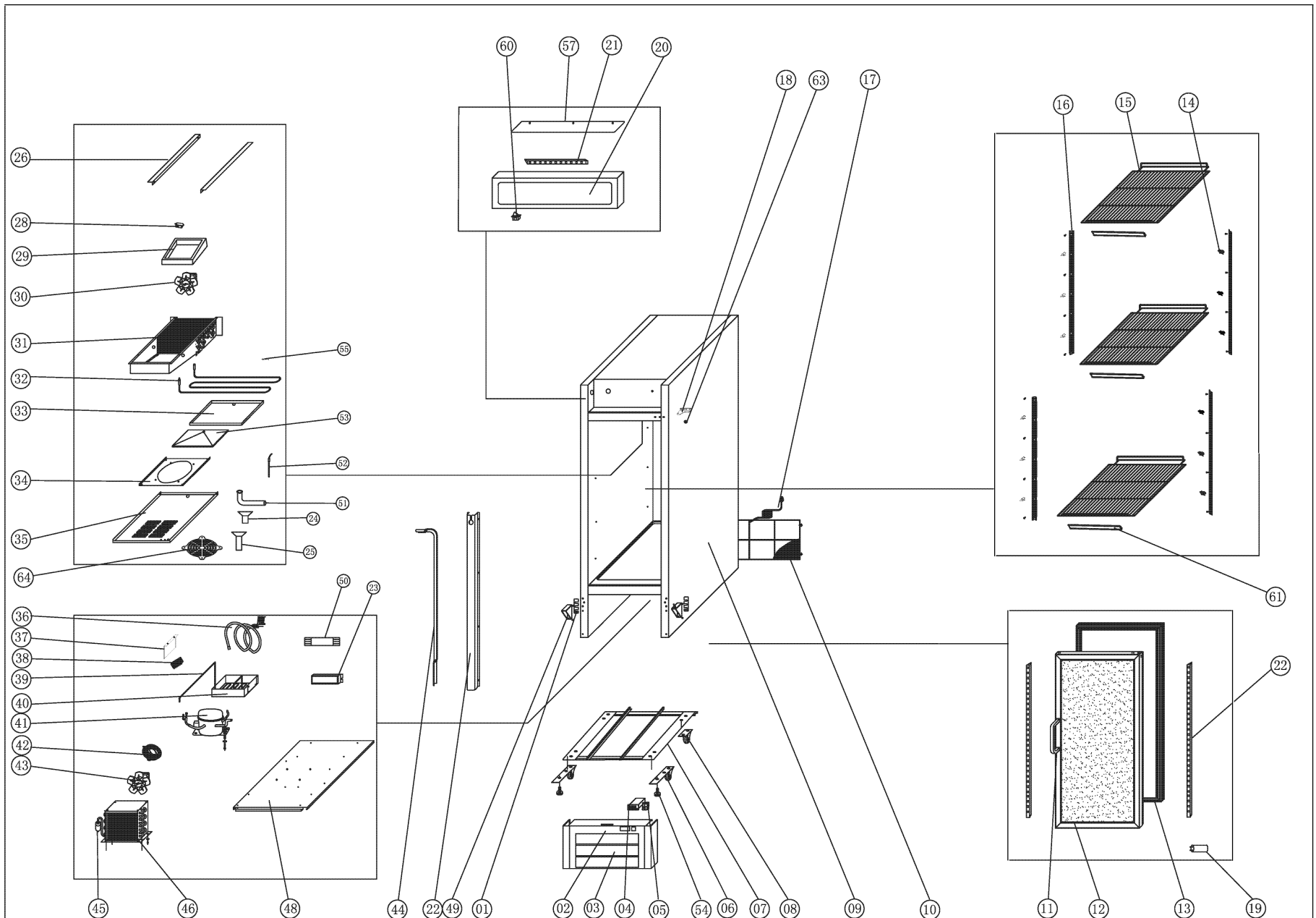
Parts List for Model: EGD-1DF-12-HC

No.	PART #	DESCRIPTION	QTY	No.	PART #	DESCRIPTION	QTY
1	G20045	DOOR SHIM	2	33	HC000681	EVAPORATOR DRAIN PAN	1
2	HC00357	KEY-DOOR, LOCK (SOLD IN PACK OF TWO)	1	34	NON STOCKING	EVAPORATOR FAN SUPPORT	1
3	GDM008751	SHROUD, LOWER FRONT	1	35	GHC50012-1	EVAPORATOR FAN COVER	1
4	HC0204	CONTROLLER, DIXELL (XR60CX-4R0F1)	1	36	HDV0016B	HELIX SUCTION PIPE+CAPILLARY B	1
5	C2194692	LIGHT SWITCH	1	37	NON STOCKING	COVER	1
6	G20037	FRONT WHEEL WITH LEVEL STOP	2	38	H00215	TERMINAL BLOCK, 5 POLE	1
7	NON STOCKING	SUPPORT PANEL	1	39	GHC2014	DISCHARGE PIPE	1
8	BC1316	1" CASTER (REAR WHEEL, FIXED)	1	40	C30018	CONDENSER DRAIN BOX	1
9	NON STOCKING	CABINET	1	41	HC0015F	COMPRESSOR (EMC3140U) W/ FILTER DRYER	1
10	G20012-1	COVER, LOWER REAR COMPARTMENT	1	41	H00229	START KIT FOR EMC3140U	1
11	HC140028	GLASS DOOR HANDLE	1	41	H00302	CAPILLARY TUBE (.055" ID X 169.25" L)	1
12	GHC0112	DOOR, GLASS	1	42	RD00111	CONDENSER FAN GUARD (V172-34)	1
13	GHC0021	GASKET (41 1/8" X 23 1/4")	1	43	H00110	CONDENSER FAN MOTOR, (CA27-04/CA01 L-600RPM)	1
14	C3234860	PILASTER CLIP	16	45	H00341	DRYER FILTER	1
15	H00416	SHELF (19.8" X 18")	3	46	HC0343	CONDENSER COIL	1
16	H04343	PILASTER	2	48	NON STOCKING	CONDENER PANEL	1
17	C2194684	POWER CORD, 14AWG/NEMA 5-15P	1	49	GHC20041	HINGE, LOWER RIGHT & LEFT	1
18	GHC20040	HINGE, UPPER RIGHT	1	49	G00334	HINGE LOWER LEFT	1
19	GLED006	LED POWER SUPPLY (35uf)	1	50	GLED003	POWER SUPPLY (LD2006, 24VDC 21.6W)	1
20	GHC60112-1	LAMP COVER	1	51	H00336	DRAIN JOINT	1
21	GLED004	LED STRIP	1	52	HC1205	DEFROST HEATING ELEMENT	1
22	GLED001L	LED STRIP (LEFT)	1	53	H00211	DRAIN PIPE HEATER (13W)	1
22	GLED001R	LED STRIP (RIGHT)	1	54	G20038	FRONT LEVEL STOP	2
23	G10006	LED POWER SUPPLY (LED-B-13VDC-15W)	1	55	H00207	FUSE, THERMAL, DEFROST HEATER	1
24	NON STOCKING	CHANNEL SUCTION LINE COVER	1	57	HGD008448	LAMP COVER PROTECTOR	1
25	HDV012A	VERTICAL SUCTION PIPE+CAPILLARY A	1	59	G30001	DRAIN PIPE FITTING (MALE)	1
26	NON STOCKING	EVAPORATOR SUPPORT GUIDE L OR R	1	60	G30002	DRAIN FITTING (FEMALE)	1
28	H03335	SENSOR CLIP	1	61	HC10015	DOOR SWITCH	1
29	NON STOCKING	AIR GUIDE	1	62	GHC40021	LABEL SUPPORT	3
30	HC0116-5	EVAPORATOR FAN MOTOR (BLDC L-1200RPM)	1	64	G20043	HINGE AXIS BUSHING	1
31	HC0355F	EVAPORATOR COIL	1	65	H00127	EVAPORATOR FAN GUARD	1
32	NON STOCKING	PANEL	1				



Parts List for Model: EGD-1DR-16-HC

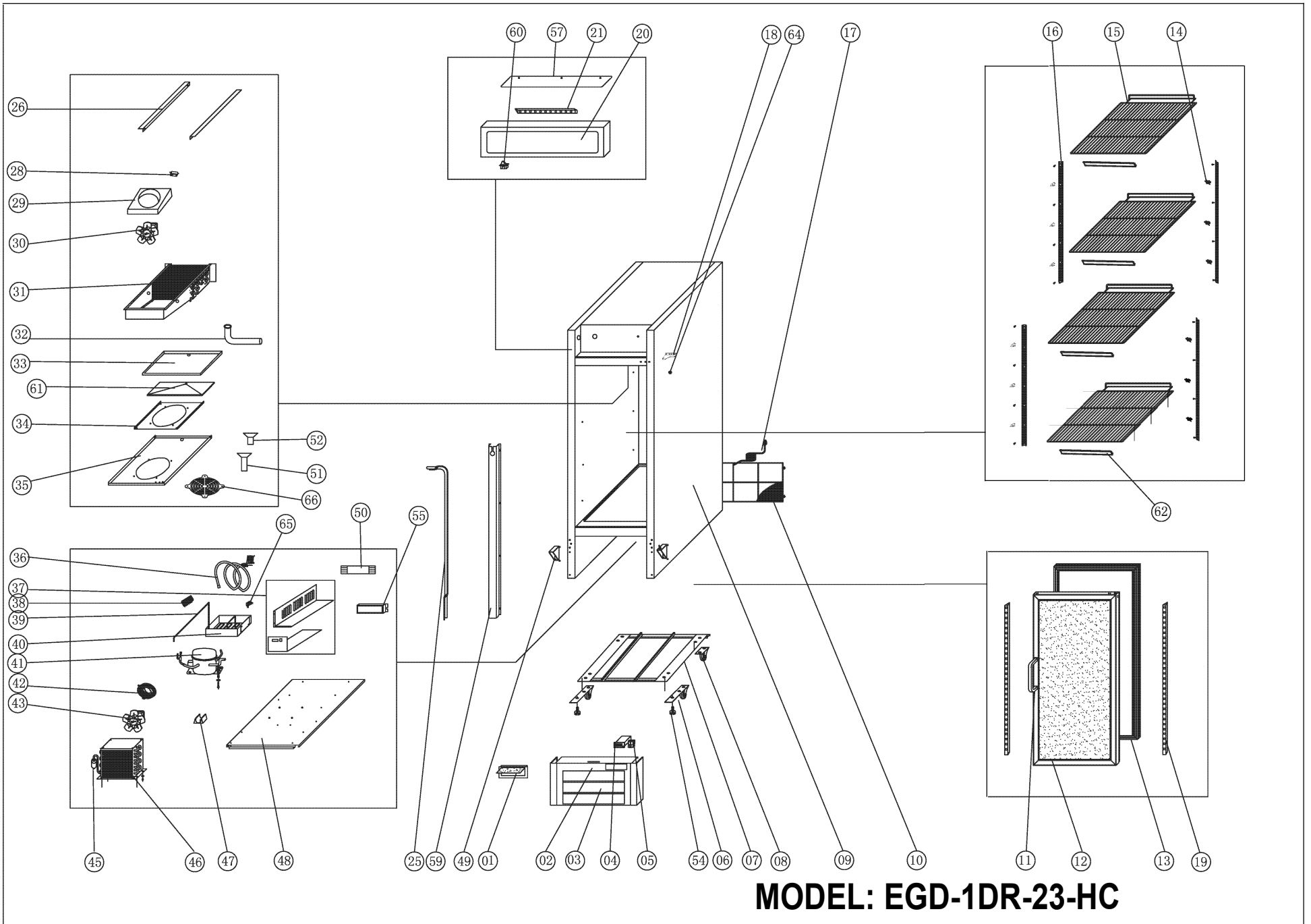
No.	PART #	DESCRIPTION	QTY	No.	PART #	DESCRIPTION	QTY
1	NON STOCKING	PANEL	1	31	HC0355F-1	EVAPORATOR COIL	1
2	HC00357	KEY-DOOR, LOCK (SOLD IN PACK OF TWO)	1	32	H00336	DRAIN JOINT	1
3	GDM008751	SHROUD, LOWER FRONT	1	33	HC000681	EVAPORATOR DRAIN PAN	1
4	H00219-2	CONTROLLER, DIXELL (XR20CX-4R0F1)	1	34	NON STOCKING	EVAPORATOR FAN SUPPORT	1
5	C2194692	LIGHT SWITCH	1	35	GHC50012	Evaporator Fan Cover	1
6	G20037	FRONT WHEEL WITH LEVEL STOP	2	36	HDV0006B	HELIX SUCTION PIPE+CAPILLARY B	1
7	NON STOCKING	SUPPORT PANEL	1	37	NON STOCKING	COVER	1
8	BC1316	1" CASTER (REAR WHEEL, FIXED)	2	38	H00215	TERMINAL BLOCK, 5 POLE	1
9	NON STOCKING	CABINET	1	39	GHC2014	DISCHARGE PIPE	1
10	G20012-1	COVER, LOWER REAR COMPARTMENT	1	40	C30013	CONDENSER DRAIN BOX	1
11	HC140028	GLASS DOOR HANDLE	1	41	HC0001F	COMPRESSOR (EM2X3117U) W/ FILTER DRIER	1
12	GHC0009	DOOR, GLASS	1	41	HC0001K	START KIT FOR EM2X3117U	1
13	GHC0016	GASKET (23" X 54")	1	41	H00301	CAPILLARY TUBE (.055" ID X 196.9" L)	1
14	C3234860	PILASTER CLIP	12	42	RD00111	CONDENSER FAN GUARD (V172-34)	1
15	H00416	SHELF (19.8" X 18")	3	43	H00110	CONDENSER FAN MOTOR, (CA27-04/CA01 L-600RPM)	1
16	H00342	PILASTER	4	45	H00341	DRIER FILTER	1
17	C2194681	POWER CORD, 18AWG/NEMA 5-15P	1	46	HC0346	CONDENSER COIL	1
18	GHC20040	HINGE, UPPER RIGHT	1	48	NON STOCKING	CONDENER PANEL	1
19	GLED002L	LED STRIP (LEFT)	1	49	GHC20041	HINGE, LOWER RIGHT & LEFT	1
19	GLED002R	LED STRIP (RIGHT)	1	49	G00334	HINGE LOWER LEFT	1
20	GHC60112-1	LAMP COVER	1	50	GLED003	POWER SUPPLY (LD2006, 24VDC 21.6W)	1
21	GLED004	LED STRIP	1	51	G30002	DRAIN FITTING (FEMALE)	1
22	NON STOCKING	CHANNEL SUCTION LINE COVER	1	52	G30001	DRAIN PIPE FITTING (MALE)	1
23	G10006	LED POWER SUPPLY (LED-B-13VDC-15W)	1	54	G20038	FRONT LEVEL STOP	2
25	HDV005A	VERTICAL SUCTION PIPE+CAPILLARY A	1	57	HGD008448	LAMP COVER PROTECTOR	1
26	NON STOCKING	EVAPORATOR SUPPORT GUIDE L OR R	1	58	HC10015	DOOR SWITCH	1
28	H03335	SENSOR CLIP	1	59	GHC40021	LABEL SUPPORT	3
29	NON STOCKING	AIR GUIDE	1	61	G20043	HINGE AXIS BUSHING	1
30	HC0116-5	EVAPORATOR FAN MOTOR (BLDC L-1200RPM)	1	62	H00127	EVAPORATOR FAN GUARD	1



MODEL: EGD-1DF-16-HC

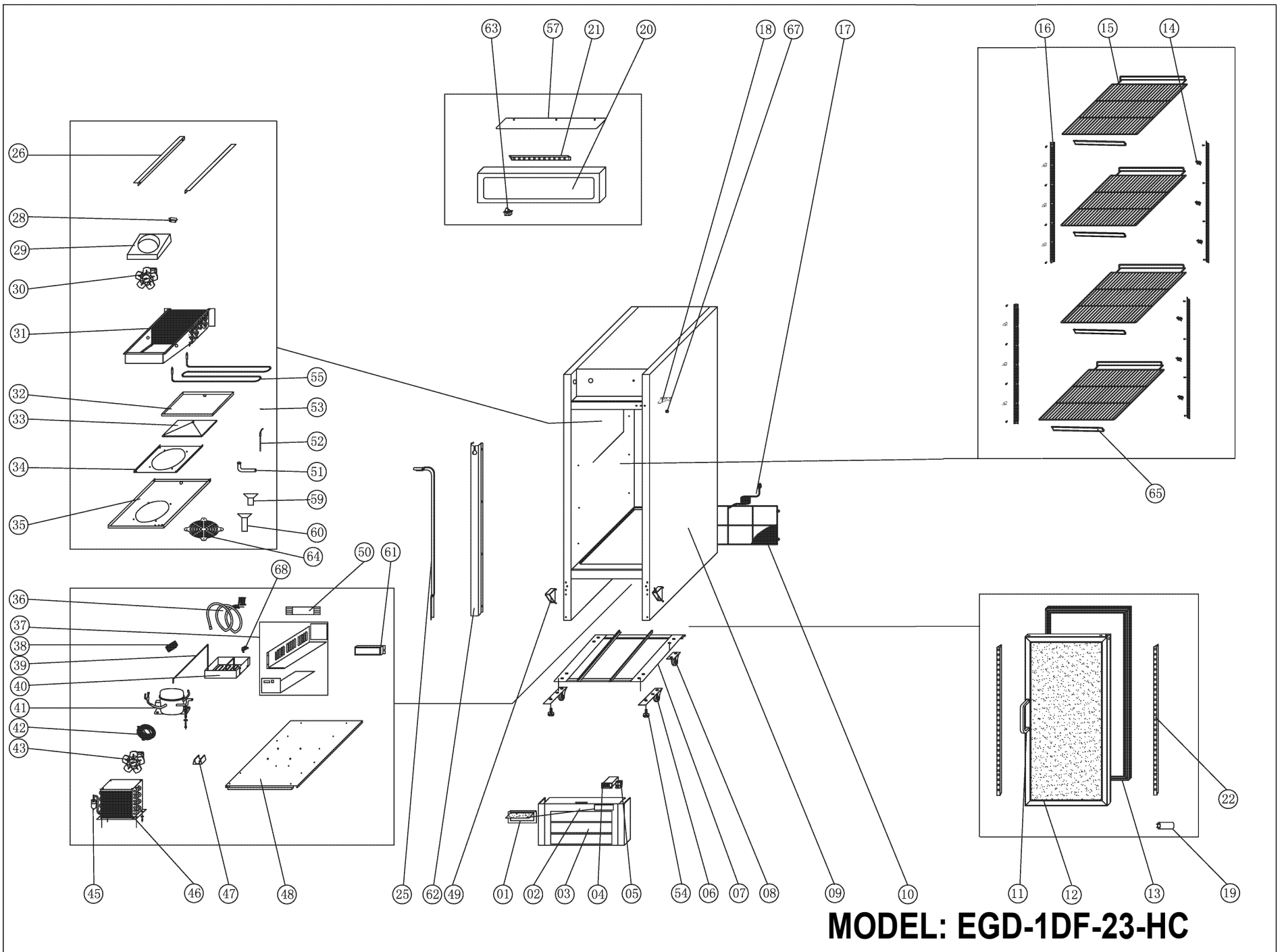
Parts List for Model: EGD-1DF-16-HC

No.	PART #	DESCRIPTION	QTY	No.	PART #	DESCRIPTION	QTY
1	G20045	DOOR SHIM	2	33	HC000681	EVAPORATOR DRAIN PAN	1
2	HC00357	KEY-DOOR, LOCK (SOLD IN PACK OF TWO)	1	34	NON STOCKING	EVAPORATOR FAN SUPPORT	1
3	GDM008751	SHROUD, LOWER FRONT	1	35	GHC50012-1	EVAPORATOR FAN COVER	1
4	HC0204	CONTROLLER, DIXELL (XR60CX-4R0F1)	1	36	HDV0016B	HELIX SUCTION PIPE+CAPILLARY B	1
5	C2194692	LIGHT SWITCH	1	37	NON STOCKING	COVER	1
6	G20037	FRONT WHEEL WITH LEVEL STOP	2	38	H00215	TERMINAL BLOCK, 5 POLE	1
7	NON STOCKING	SUPPORT PANEL	1	39	GHC2014	DISCHARGE PIPE	1
8	BC1316	1" CASTER (REAR WHEEL, FIXED)	2	40	C30013	CONDENSER DRAIN BOX	1
9	NON STOCKING	CABINET	1	41	HC0015F	COMPRESSOR (EMC3140U) W/ FILTER DRIER	1
10	G20012-1	COVER, LOWER REAR COMPARTMENT	1	41	H00229	START KIT FOR EMC3140U	1
11	HC140028	GLASS DOOR HANDLE	1	41	H00302	CAPILLARY TUBE (.055" ID X 169.25" L)	1
12	GHC0116	DOOR, GLASS	1	42	RD00111	CONDENSER FAN GUARD (V172-34)	1
13	GHC0016	GASKET (23" X 54")	1	43	H00110	CONDENSER FAN MOTOR, (CA27-04/CA01 L-600RPM)	1
14	C3234860	PILASTER CLIP	16	44	HDV016A	VERTICAL SUCTION PIPE+CAPILLARY A	1
15	H00416	SHELF (19.8" X 18")	3	45	H00341	DRIER FILTER	1
16	H00342	PILASTER	8	46	HC0343	CONDENSER COIL	1
17	C2194684	POWER CORD, 14AWG/NEMA 5-15P	1	48	NON STOCKING	CONDENSER PANEL	1
18	GHC20040	HINGE, UPPER RIGHT	1	49	GHC20041	HINGE, LOWER RIGHT & LEFT	1
19	GLED006	LED POWER SUPPLY (35uf)	1	49	G00334	HINGE LOWER LEFT	1
20	GHC60112-1	LAMP COVER	1	50	GLED003	POWER SUPPLY (LD2006, 24VDC 21.6W)	1
21	GLED004	LED STRIP	1	51	H00336	DRAIN JOINT	1
22	GLED002L	LED STRIP (LEFT)	1	52	H00211	DRAIN PIPE HEATER (13W)	1
22	GLED002R	LED STRIP (RIGHT)	1	53	NON STOCKING	PANEL	1
23	G10006	LED POWER SUPPLY (LED-B-13VDC-15W)	1	54	G20038	FRONT LEVEL STOP	1
24	G30002	DRAIN FITTING (FEMALE)	1	55	H00207	FUSE, THERMAL, DEFROST HEATER	1
25	G30001	DRAIN PIPE FITTING (MALE)	1	57	HGD008448	LAMP COVER PROTECTOR	1
26	NON STOCKING	EVAPORATOR SUPPORT GUIDE L OR R	1	59	NON STOCKING	CHANNEL SUCTION LINE COVER	1
28	H03335	SENSOR CLIP	1	60	HC10015	DOOR SWITCH	1
29	NON STOCKING	AIR GUIDE	1	61	GHC40021	LABEL SUPPORT	3
30	HC0116-5	EVAPORATOR FAN MOTOR (BLDC L-1200RPM)	1	63	G20043	HINGE AXIS BUSHING	1
31	HC0355F-1	EVAPORATOR COIL	1	64	H00127	EVAPORATOR FAN GUARD	1
32	HC1205	DEFROST HEATING ELEMENT	1				



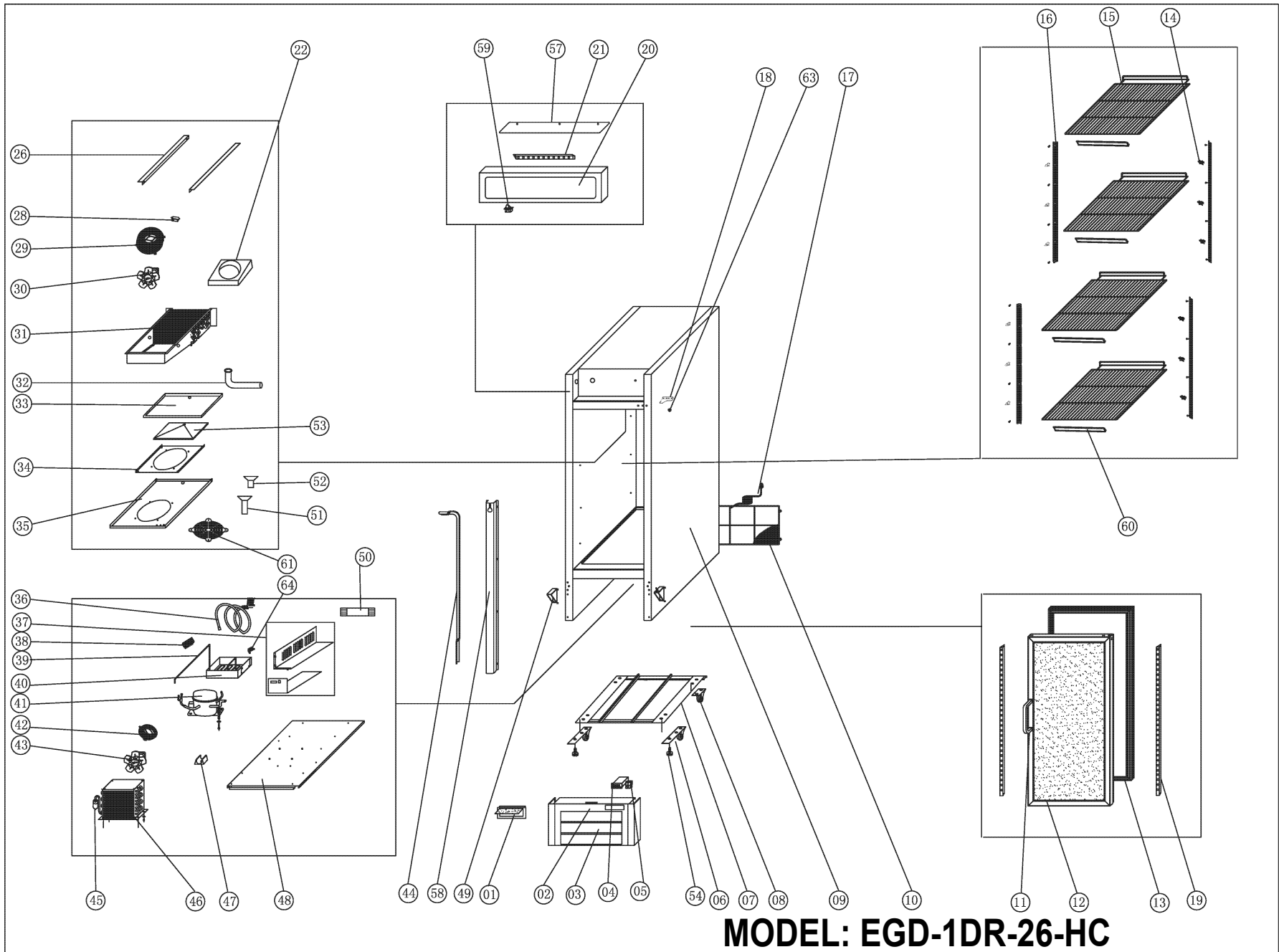
Parts list for Model: EGD-1DR-23-ES-HC

No.	PART #	DESCRIPTION	QTY	No.	PART #	DESCRIPTION	QTY
1	HC0381	PLASTIC PROTECTION COVER	1	35	GHC50014-1	EVAPORATOR FAN COVER	1
2	HC00357	KEY-DOOR, LOCK (SOLD IN PACK OF TWO)	1	36	HDV0006B	HELIX SUCTION PIPE+CAPILLARY B	1
3	GDM008744	SHROUD, LOWER FRONT	1	37	NON STOCKING	JUNCTION BOX	1
4	H00219-2	CONTROLLER, DIXELL (XR20CX-4R0F1)	1	38	H00215	TERMINAL BLOCK, 5 POLE	1
5	C2194692	LIGHT SWITCH	1	39	GHC2022	DISCHARGE PIPE	1
6	G20037	FRONT WHEEL WITH LEVEL STOP	2	40	C30014	CONDENSER DRAIN BOX	1
7	NON STOCKING	SUPPORT PANEL	1	41	HC0001F	COMPRESSOR (EM2X3117U) W/ FILTER DRIER	1
8	BC1316	1" CASTER (REAR WHEEL, FIXED)	2	41	HC0001K	START KIT FOR EM2X3117U	1
9	NON STOCKING	CABINET	1	41	H00301	CAPILLARY TUBE (.055" ID X 196.9" L)	1
10	H00313	COVER, LOWER REAR COMPARTMENT	1	42	RD00111	CONDENSER FAN GUARD (V172-34)	1
11	H107140020	GLASS DOOR HANDLE	1	43	H00110	CONDENSER FAN MOTOR, (CA27-04/CA01 L-600RPM)	1
12	GHC01R	DOOR, RIGHT, GLASS	1	45	H00341	DRIER FILTER	1
13	GHC0023-1	GASKET (25 3/16" X 54 1/4")	1	46	HC0346	CONDENSER COIL	1
14	C3234860	PILASTER CLIP	16	47	NON STOCKING	DRIER SUPPORT	1
15	H00307-G	SHELF (21.57" X 24.33")	4	48	NON STOCKING	CONDENER PANEL	1
16	H00342	PILASTER	4	49	GHC20041	HINGE, LOWER RIGHT & LEFT	1
17	C2194681	POWER CORD, 18AWG/NEMA 5-15P	1	49	G00334	HINGE LOWER LEFT	1
18	GHC20040	HINGE, UPPER RIGHT	1	50	GLED003	POWER SUPPLY (LD2006, 24VDC 21.6W)	1
19	GLED002L	LED STRIP (LEFT)	1	51	G30002	DRAIN FITTING (FEMALE)	1
19	GLED002R	LED STRIP (RIGHT)	1	52	G30001	DRAIN PIPE FITTING (MALE)	1
20	H5114000669	LAMP COVER	1	54	G20038	FRONT LEVEL STOP	2
21	GLED004	LED STRIP	1	55	G10006	LED POWER SUPPLY (LED-B-13VDC-15W)	1
25	HDV008A	VERTICAL SUCTION PIPE+CAPILLARY A	1	57	HGD008452	LAMP COVER PROTECTOR	1
26	NON STOCKING	EVAPORATOR SUPPORT GUIDE L OR R	2	59	NON STOCKING	CHANNEL SUCTION LINE COVER	1
28	H00335	SENSOR CLIP	1	60	HC10015	DOOR SWITCH	1
29	NON STOCKING	AIR GUIDE	1	61	NON STOCKING	PANEL	1
30	HC0116-5	EVAPORATOR FAN MOTOR (BLDC L-1200RPM)	1	62	GHC40021	LABEL SUPPORT	4
31	HC000111	EVAPORATOR COIL	1	64	G20043	HINGE AXIS BUSHING	1
32	H00336	DRAIN JOINT	1	65	NON STOCKING	DRAIN BRACKET	1
33	HC0142	DRAIN PAN, EVAPORATOR (USE AFTER TO 2204)	1	66	H00112-1	EVAPORATOR FAN GUARD	1
34	NON STOCKING	EVAPORATOR FAN SUPPORT	1				



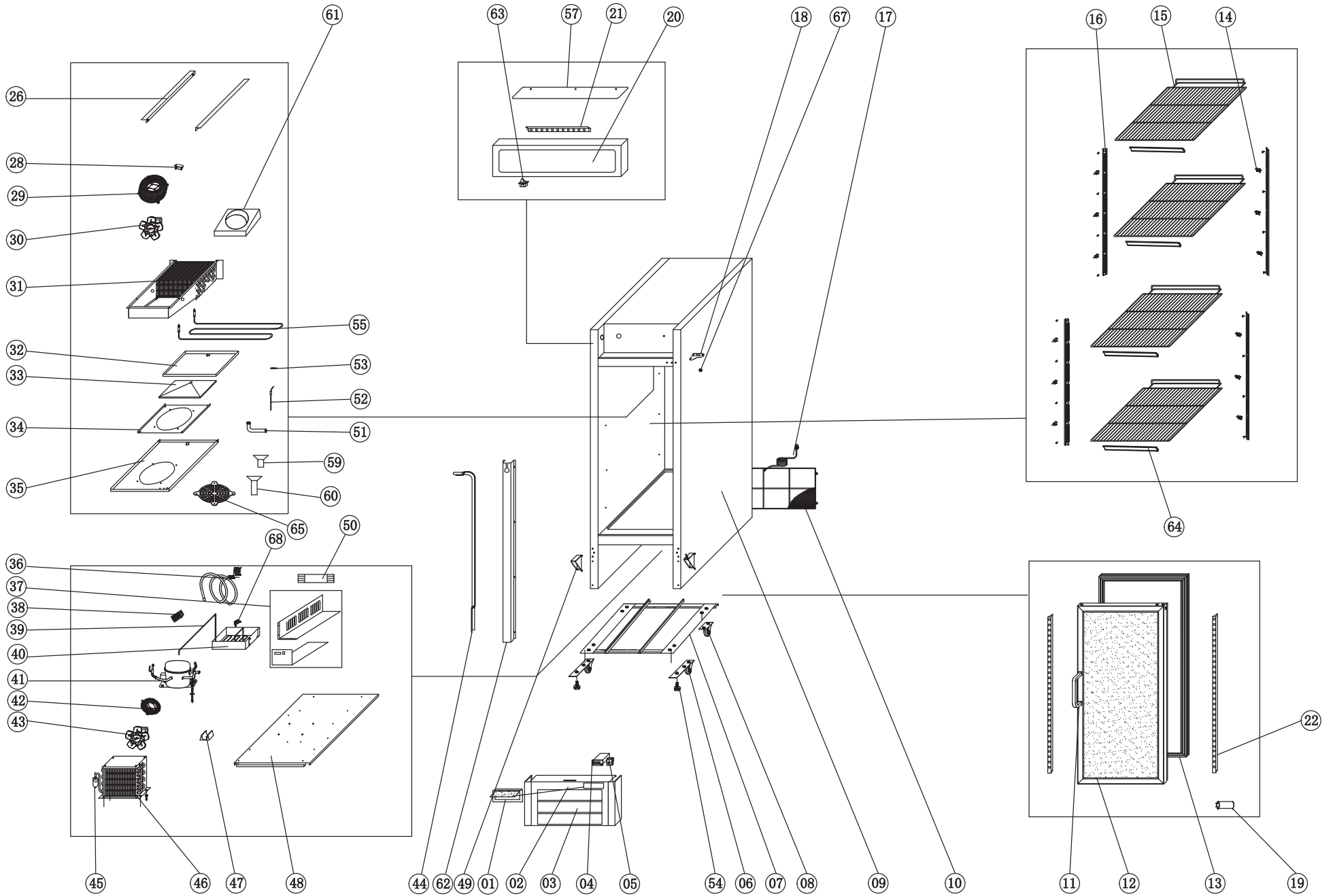
Parts List for Model: EGD-1DF-23-HC

No.	PART #	DESCRIPTION	QTY	No.	PART #	DESCRIPTION	QTY
1	HC0381	PLASTIC PROTECTION COVER	1	36	HDV0018B	HELIX SUCTION PIPE+CAPILLARY B	1
2	HC00357	KEY-DOOR, LOCK (SOLD IN PACK OF TWO)	1	37	NON STOCKING	JUNCTION BOX	1
3	GDM008744	SHROUD, LOWER FRONT	1	38	H00215	TERMINAL BLOCK, 5 POLE	1
4	HC0204	CONTROLLER, DIXELL (XR60CX-4R0F1)	1	39	GHC2021	DISCHARGE PIPE	1
5	C2194692	LIGHT SWITCH	1	40	C30014	CONDENSER DRAIN BOX	1
6	G20037	FRONT WHEEL WITH LEVEL STOP	2	41	HC0011F	COMPRESSOR (SCE15CNLX) W/ FILTER DRIER	1
7	NON STOCKING	SUPPORT PANEL	1	41	HC0011K	START KIT FOR SCE15CNLX	1
8	BC1316	1" CASTER (REAR WHEEL, FIXED)	2	41	H00302	CAPILLARY TUBE (.055" ID X 169.25" L)	1
9	NON STOCKING	CABINET	1	42	RD00111	CONDENSER FAN GUARD (V172-34)	1
10	H00313	COVER, LOWER REAR COMPARTMENT	1	43	H00110	CONDENSER FAN MOTOR, (CA27-04/CA01 L-600RPM)	1
11	H107140020	GLASS DOOR HANDLE	1	45	H00341	DRIER FILTER	1
12	GHCF05R	DOOR, RIGHT, GLASS	1	46	HC0343	CONDENSER COIL	1
13	GHC0023-1	GASKET (25 3/16" X 54 1/4")	1	47	NON STOCKING	DRIER SUPPORT	1
14	C3234860	PILASTER CLIP	16	48	NON STOCKING	CONDENSER PANEL	1
15	H00307-G	SHELF (21.57" X 24.33")	4	49	GHC20041	HINGE, LOWER RIGHT & LEFT	1
16	H00342	PILASTER	4	49	G00334	HINGE LOWER LEFT	1
17	C2194684	POWER CORD, 14AWG/NEMA 5-15P	1	50	GLED003	POWER SUPPLY (LD2006, 24VDC 21.6W)	1
18	GHC20040	HINGE, UPPER RIGHT	1	51	H00336	DRAIN JOINT	1
19	GLED006	LED POWER SUPPLY (35uf)	1	52	H00211	DRAIN PIPE HEATER (13W)	1
20	H5114000669	LAMP COVER	1	53	H00207	FUSE, THERMAL, DEFROST HEATER	1
21	GLED004	LED STRIP	1	54	G20038	FRONT LEVEL STOP	2
22	GLED002L	LED STRIP (LEFT)	1	55	HC0201	DEFROST HEATING ELEMENT	1
22	GLED002R	LED STRIP (RIGHT)	1	57	HGD008452	LAMP COVER PROTECTOR	1
25	HDV007A	VERTICAL SUCTION PIPE+CAPILLARY A	1	59	G30002	DRAIN FITTING (FEMALE)	1
26	NON STOCKING	EVAPORATOR SUPPORT GUIDE L OR R	1	60	G30001	DRAIN PIPE FITTING (MALE)	1
28	H00335	SENSOR CLIP	1	61	G10006	LED POWER SUPPLY (LED-B-13VDC-15W)	1
29	NON STOCKING	AIR GUIDE	1	62	NON STOCKING	CHANNEL SUCTION LINE COVER	1
30	HC0116-5	EVAPORATOR FAN MOTOR (BLDC L-1200RPM)	1	63	HC10015	DOOR SWITCH	1
31	HC000111	EVAPORATOR COIL	1	64	H00112-1	EVAPORATOR FAN GUARD	1
32	HC0142	DRAIN PAN, EVAPORATOR (USE AFTER TO 2204)	1	65	GHC40021	LABEL SUPPORT	4
33	NON STOCKING	PANEL	1	67	G20043	HINGE AXIS BUSHING	1
34	NON STOCKING	EVAPORATOR FAN SUPPORT	1	68	NON STOCKING	DRAIN BRACKET	1
35	GHC50014-1	EVAPORATOR FAN COVER	1				



Parts List for Model: EGD-1DR-26-HC

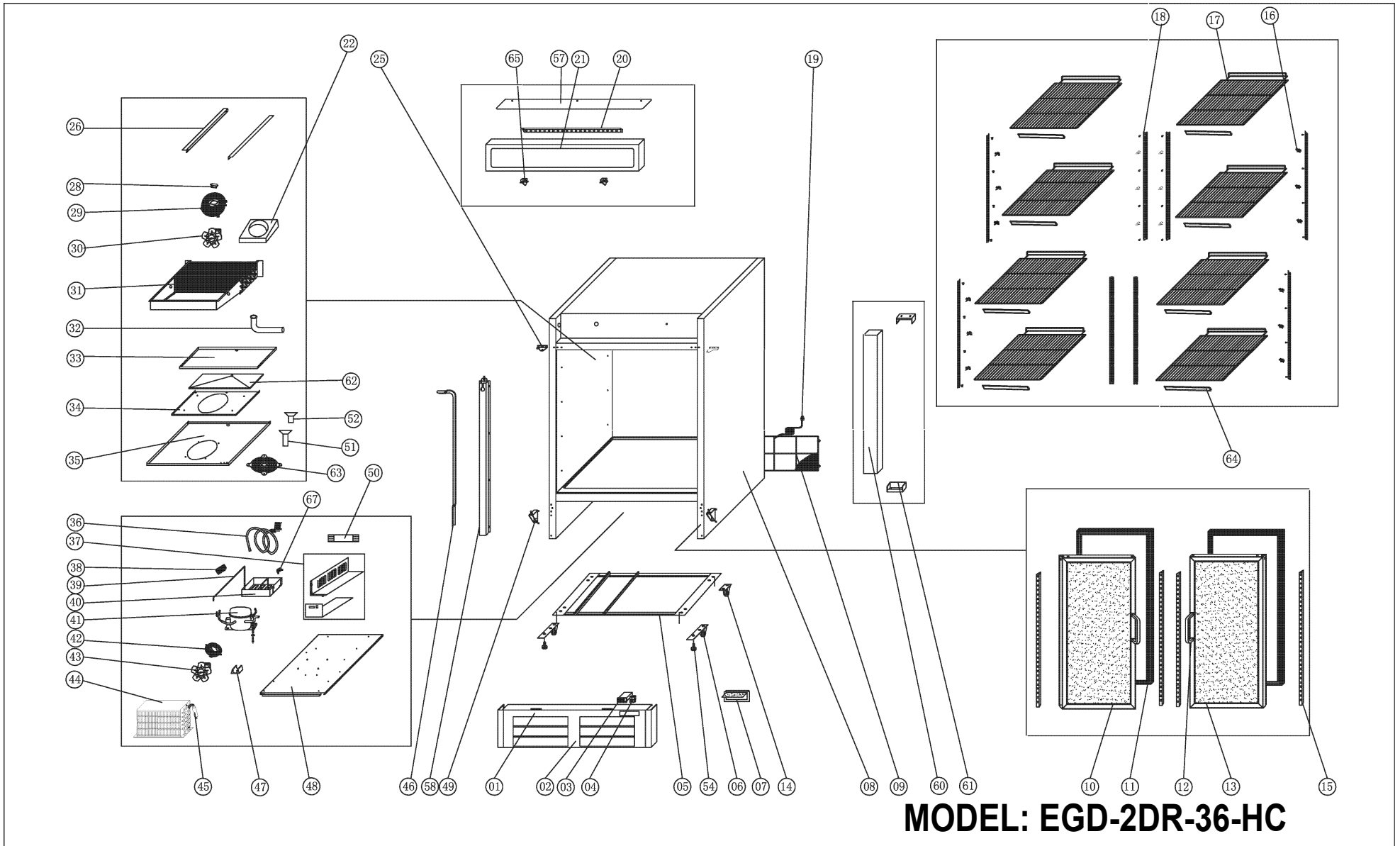
No.	PART #	DESCRIPTION	QTY	No.	PART #	DESCRIPTION	QTY
1	HC0381	PLASTIC PROTECTION COVER	2	35	H5202004552	EVAPORATOR FAN COVER	1
2	HC00357	KEY-DOOR, LOCK (SOLD IN PACK OF TWO)	1	36	HDV0006B	HELIX SUCTION PIPE+CAPILLARY B	1
3	HGD008745	SHROUD, LOWER FRONT	1	37	NON STOCKING	JUNCTION BOX	1
4	H00219-2	CONTROLLER, DIXELL (XR20CX-4R0F1)	1	38	H00215	TERMINAL BLOCK, 5 POLE	1
5	C2194692	LIGHT SWITCH	1	39	GHC2022	DISCHARGE PIPE	1
6	G20037	FRONT WHEEL WITH LEVEL STOP	2	40	C30014	CONDENSER DRAIN BOX	1
7	NON STOCKING	SUPPORT PANEL	1	41	HC0001F	COMPRESSOR (EM2X3117U) W/ FILTER DRIER	1
8	BC1316	1" CASTER (REAR WHEEL, FIXED)	2	41	HC0001K	START KIT FOR EM2X3117U	1
9	NON STOCKING	CABINET	1	41	H00301	CAPILLARY TUBE (.055" ID X 196.9" L)	1
10	HGD020163	COVER, LOWER REAR COMPARTMENT	1	42	RD00111	CONDENSER FAN GUARD (V172-34)	1
11	H107140020	GLASS DOOR HANDLE	1	43	H00110	CONDENSER FAN MOTOR, (CA27-04/CA01 L-600RPM)	1
12	GHC0008-1	DOOR, GLASS	1	44	HDV008A	VERTICAL SUCTION PIPE+CAPILLARY A	1
13	GHC0026	GASKET (26 3/4" X 54 1/4")	1	45	H00341	DRIER FILTER	1
14	C3234860	PILASTER CLIP	16	46	HC0346	CONDENSER COIL	1
15	H109020006	SHELF (23.15" X 26.14")	4	47	NON STOCKING	DRIER SUPPORT	1
16	H00342	PILASTER	4	48	NON STOCKING	CONDENER PANEL	1
17	C2194681	POWER CORD, 18AWG/NEMA 5-15P	1	49	GHC20041	HINGE, LOWER RIGHT & LEFT	1
18	GHC20040	HINGE, UPPER RIGHT	1	49	G00334	HINGE LOWER LEFT	1
19	GLED002L	LED STRIP (LEFT)	1	50	GLED003	POWER SUPPLY (LD2006, 24VDC 21.6W)	1
19	GLED002R	LED STRIP (RIGHT)	1	51	G30002	DRAIN FITTING (FEMALE)	1
20	H5114000244	LAMP COVER	1	52	G30001	DRAIN PIPE FITTING (MALE)	1
21	GLED004	LED STRIP	1	53	NON STOCKING	PANEL	1
22	NON STOCKING	AIR GUIDE	1	54	G20038	FRONT LEVEL STOP	2
26	NON STOCKING	EVAPORATOR SUPPORT GUIDE L OR R	1	57	HGD008449	LAMP COVER PROTECTOR	1
28	H00335	SENSOR CLIP	1	58	NON STOCKING	CHANNEL SUCTION LINE COVER	1
29	H00112	EVAPORATOR FAN GUARD, WHITE	1	59	HC10015	DOOR SWITCH	1
30	H00114-1	EVAPORATOR FAN MOTOR (7108-900RPM)	1	60	GHC40022	LABEL SUPPORT	4
31	HC0349R-1	EVAPORATOR COIL	1	61	H00112-1	EVAPORATOR FAN GUARD	1
32	H00336	DRAIN JOINT	1	63	G20043	HINGE AXIS BUSHING	1
33	HC0142	DRAIN PAN, EVAPORATOR (USE AFTER TO 2204)	1	64	NON STOCKING	DRAIN BRACKET	1
34	NON STOCKING	EVAPORATOR FAN SUPPORT	1				



EGD-1DF-26-HC

Parts List for Model: EGD-1DF-26-HC

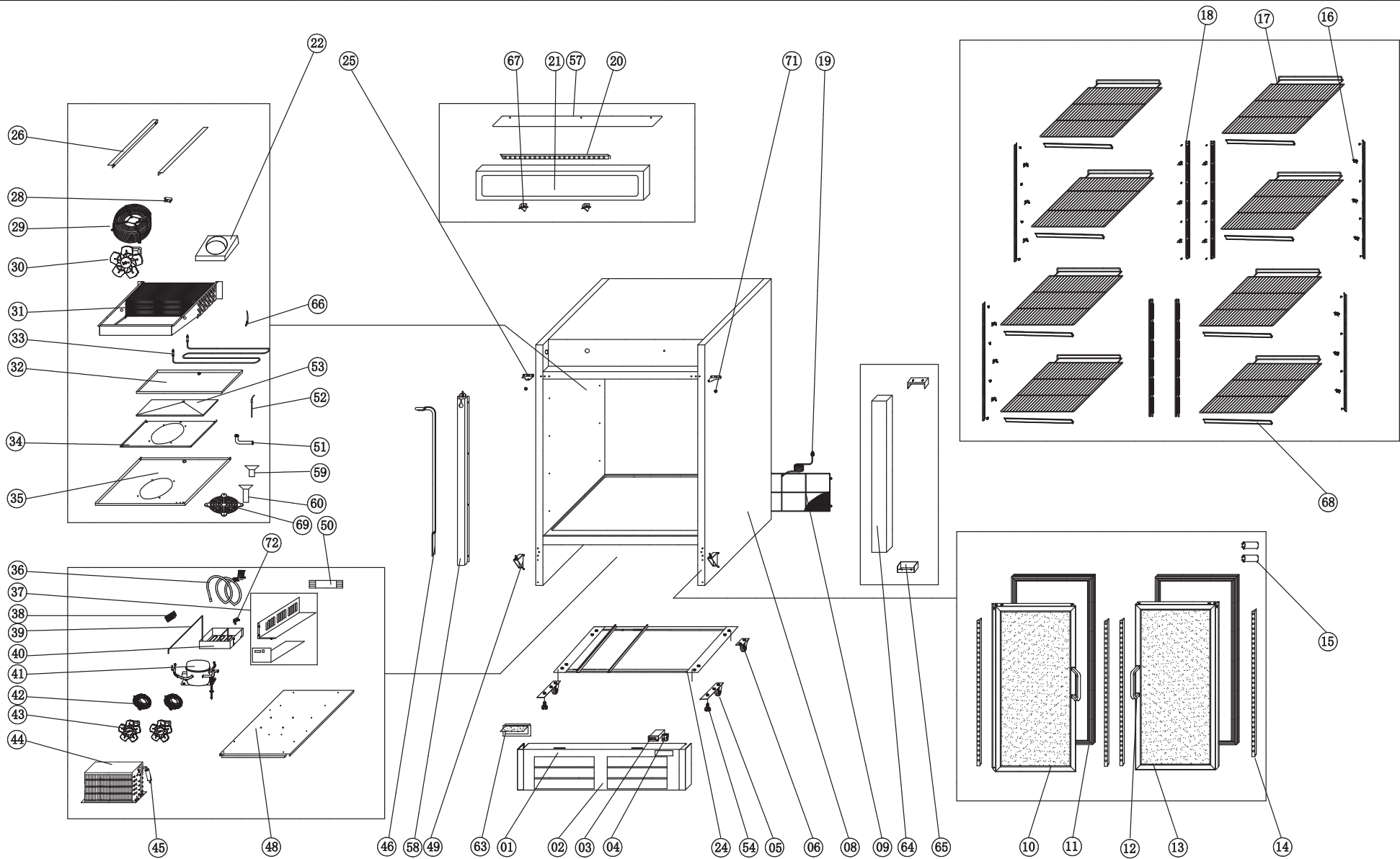
No.	PART #	DESCRIPTION	QTY	No.	PART #	DESCRIPTION	QTY
1	HC0381	PLASTIC PROTECTION COVER	1	36	HDV0018B	HELIX SUCTION PIPE+CAPILLARY B	1
2	HC00357	KEY-DOOR, LOCK (SOLD IN PACK OF TWO)	1	37	NON STOCKING	JUNCTION BOX	2
3	HGD008745	SHROUD, LOWER FRONT	1	38	H00215	TERMINAL BLOCK, 5 POLE	1
4	HC0204	CONTROLLER, DIXELL (XR60CX-4R0F1)	1	39	GHC2021	DISCHARGE PIPE	1
5	C2194692	LIGHT SWITCH	1	40	C30014	CONDENSER DRAIN BOX	1
6	G20037	FRONT WHEEL WITH LEVEL STOP	2	41	HC0011F	COMPRESSOR (SCE15CNLX) W/ FILTER DRIER	1
7	NON STOCKING	SUPPORT PANEL	1	41	HC0011K	START KIT FOR SCE15CNLX	1
8	BC1316	1" CASTER (REAR WHEEL, FIXED)	2	41	H00302	CAPILLARY TUBE (.055" ID X 169.25" L)	1
9	NON STOCKING	CABINET	1	42	RD00111	CONDENSER FAN GUARD (V172-34)	1
10	HGD020163	COVER, LOWER REAR COMPARTMENT	1	43	H00110	CONDENSER FAN MOTOR, (CA27-04/CA01 L-600RPM)	1
11	H107140020	GLASS DOOR HANDLE	1	44	HDV007A	VERTICAL SUCTION PIPE+CAPILLARY A	1
12	GHC0010	DOOR, GLASS	1	45	H00341	FILTER DRIER	1
13	GHC0026	GASKET (26 3/4" X 54 1/4")	1	46	HC0343	CONDENSER COIL	1
14	C3234860	PILASTER CLIP	16	48	NON STOCKING	CONDENSER PANEL	1
15	H109020006	SHELF (23.15" X 26.14")	4	49	GHC20041	HINGE, LOWER RIGHT & LEFT	1
16	H00342	PILASTER	4	49	G00334	HINGE LOWER LEFT	1
17	C2194684	POWER CORD, 14AWG/NEMA 5-15P	1	50	GLED003	LED POWER SUPPLIER	1
18	GHC20040	HINGE, UPPER RIGHT	1	51	H00336	DRAIN JOINT	1
19	GLED006	LED POWER SUPPLY (35uf)	1	52	H00211	DRAIN PIPE HEATER (13W)	1
20	H5114000244	LAMP COVER	1	53	H00207	FUSE, THERMAL, DEFROST HEATER	1
21	GLED004	LED STRIP	1	54	G20038	FRONT LEVEL STOP	2
22	GLED002L	LED STRIP(LEFT)	1	55	HC0201	DEFROST HEATING ELEMENT	1
22	GLED002R	LED STRIP(RIGHT)	1	57	HGD008449	LAMP COVER PROTECTOR	1
26	NON STOCKING	EVAPORATOR SUPPORT GUIDE L OR R	1	59	G30002	DRAIN FITTING (FEMALE)	1
28	H00335	SENSOR CLIP	1	60	G30001	DRAIN PIPE FITTING (MALE)	1
29	H00112	EVAPORATOR FAN GUARD, WHITE	1	61	NON STOCKING	AIR GUIDE	1
30	H00114-1	EVAPORATOR FAN MOTOR (7108-900RPM)	1	62	NON STOCKING	CHANNEL SUCTION LINE COVER	1
31	HC0349R-1	EVAPORATOR COIL	1	63	HC10015	DOOR SWITCH	1
32	HC0142	DRAIN PAN, EVAPORATOR (USE AFTER TO 2204)	1	64	GHC40022	LABEL SUPPORT	4
33	NON STOCKING	PANEL	1	65	H00112-1	EVAPORATOR FAN GUARD	1
34	NON STOCKING	EVAPORATOR FAN SUPPORT	1	67	G20043	HINGE AXIS BUSHING	1
35	H5202004552	EVAPORATOR FAN COVER	1	68	NON STOCKING	DRAIN BRACKET	1



MODEL: EGD-2DR-36-HC

Parts List for Model: EGD-2DR-36-HC

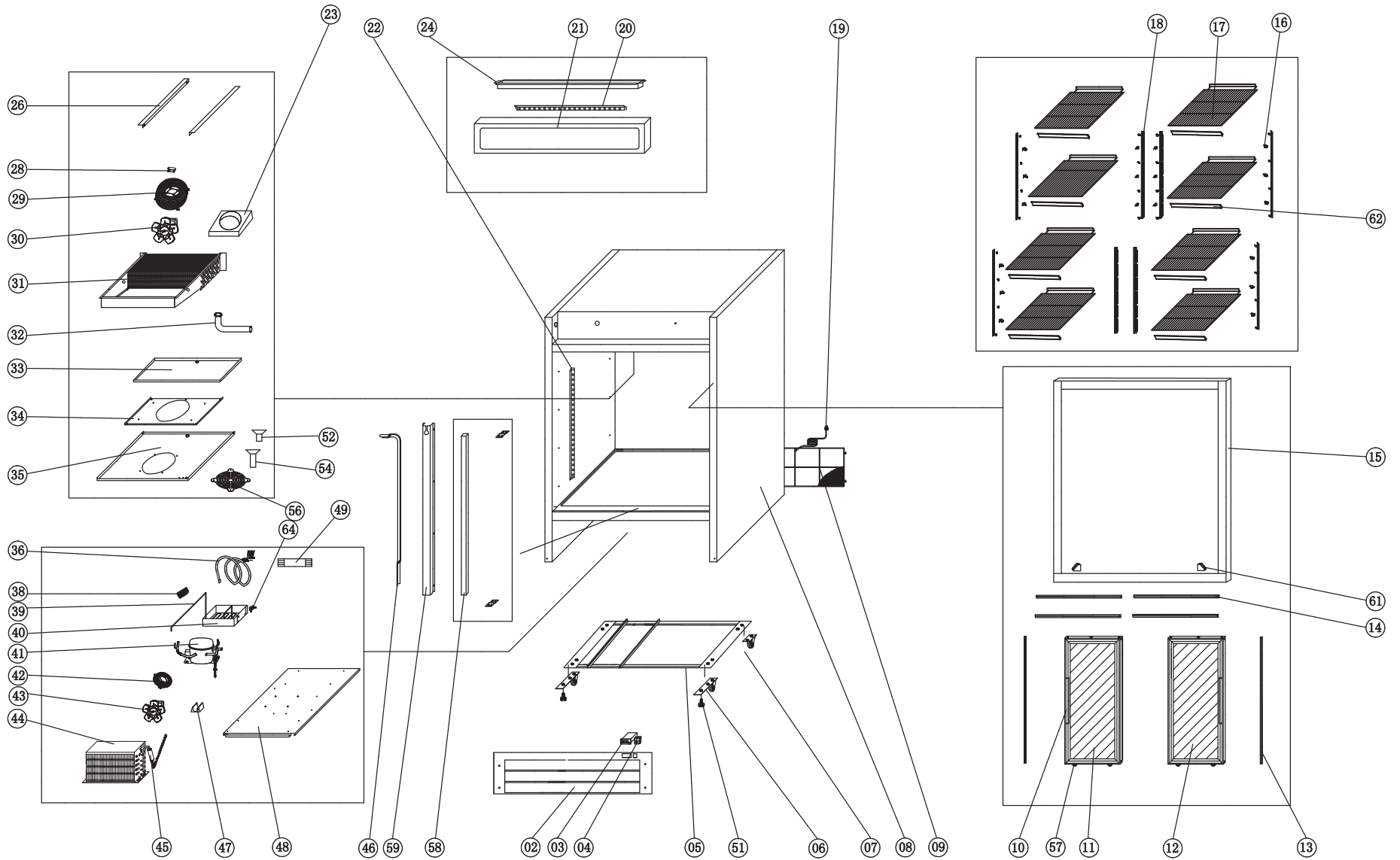
No.	PART #	DESCRIPTION	QTY	No.	PART #	DESCRIPTION	QTY
1	HC00357	KEY-DOOR, LOCK (SOLD IN PACK OF TWO)	2	35	HC0160-1	EVAPORATOR FAN COVER, (REPLACES HC0160)	1
2	HGD008726	SHROUD, LOWER FRONT (REPLACES H5114000216)	1	36	HDV0008B-1	HELIX SUCTION PIPE+CAPILLARY B	1
3	H00219-2	CONTROLLER, DIXELL (XR20CX-4R0F1)	1	37	NON STOCKING	JUNCTION BOX	1
4	C2194692	LIGHT SWITCH	1	38	H00215	TERMINAL BLOCK, 5 POLE	1
5	NON STOCKING	SUPPORT PANEL	1	39	GHC2022	DISCHARGE PIPE	1
6	G20037	FRONT WHEEL WITH LEVEL STOP	2	40	C30014	CONDENSER DRAIN BOX	1
7	HC0381	PLASTIC PROTECTION COVER	2	41	H00039F	COMPRESSOR (EM2X3125U) W/ FILTER DRIER	1
8	NON STOCKING	CABINET	1	41	H00228	START KIT FOR EM2X3125U	1
9	H03315	COVER, LOWER REAR COMPARTMENT	1	41	H01302	CAPILLARY TUBE (.055" ID X 118.1" L)	1
10	H112010716	DOOR, LEFT, GLASS	1	42	RD00111	CONDENSER FAN GUARD (V172-34)	1
11	GHC0036	GASKET (17 1/2" X 53 3/4")	2	43	H00110	CONDENSER FAN MOTOR, (CA27-04/CA01 L-600RPM)	1
12	G20026	GLASS DOOR HANDLE	2	44	HC0346	CONDENSER COIL	1
13	H112010717	DOOR, RIGHT, GLASS	1	45	H00341	DRIER FILTER	1
14	BC1316	1" CASTER (REAR WHEEL, FIXED)	2	46	H00303	VERTICAL SUCTION PIPE+CAPILLARY A	1
15	GLED002L	LED STRIP (LEFT)	2	47	NON STOCKING	DRIER SUPPORT	1
15	GLED002R	LED STRIP (RIGHT)	2	48	NON STOCKING	CONDENER PANEL	1
16	C3234860	PILASTER CLIP	32	49	GHC20041	HINGE, LOWER RIGHT & LEFT	1
17	H109020008	SHELF (16.41" X 24.33")	8	49	G20042	HINGE, LOWER LEFT	1
18	H00342	PILASTER	8	50	GLED018	LED POWER SUPPLY (40WCN40-24, 24V)	1
19	C2194681	POWER CORD, 18AWG/NEMA 5-15P	1	51	G30001	DRAIN PIPE FITTING (MALE)	1
20	GLED016	LED STRIP	1	52	G30002	DRAIN FITTING (FEMALE)	1
21	HGD008453	LAMP COVER PROTECTOR	1	53	NON STOCKING	EVAPORATOR SUPPORT GUIDE L OR R	2
22	NON STOCKING	AIR GUIDE	1	54	G20038	FRONT LEVEL STOP	2
25	GHC20040	HINGE, UPPER RIGHT	1	57	HGD003850	LAMP COVER PROTECTOR	1
25	G20044	HINGE, UPPER LEFT	1	58	NON STOCKING	CHANNEL SUCTION LINE COVER	1
26	NON STOCKING	EVAPORATOR SUPPORT GUIDE L OR R	1	60	HC00026-1	CENTER MULLION	1
28	H00335	SENSOR CLIP	1	61	HC00112-1	CENTER MULLION BRACKET (USE AFTER DATE 2201)	2
29	H00112	EVAPORATOR FAN GUARD, WHITE	1	62	NON STOCKING	PANEL	1
30	H00114-1	EVAPORATOR FAN MOTOR (7108-900RPM)	1	63	H00112-1	EVAPORATOR FAN GUARD	1
31	HC0351R	EVAPORATOR COIL	1	64	GHC40023	LABEL SUPPORT	8
32	H00336	DRAIN JOINT	1	65	HC10015	DOOR SWITCH	2
33	H00143.1	EVAPORATOR DRAIN PAN (USE AFTER 1409)	1	67	NON STOCKING	DRAIN BRACKET	1
34	NON STOCKING	EVAPORATOR FAN SUPPORT	1				



EGD-2DF-36-HC

EGD-2DF-36-HC

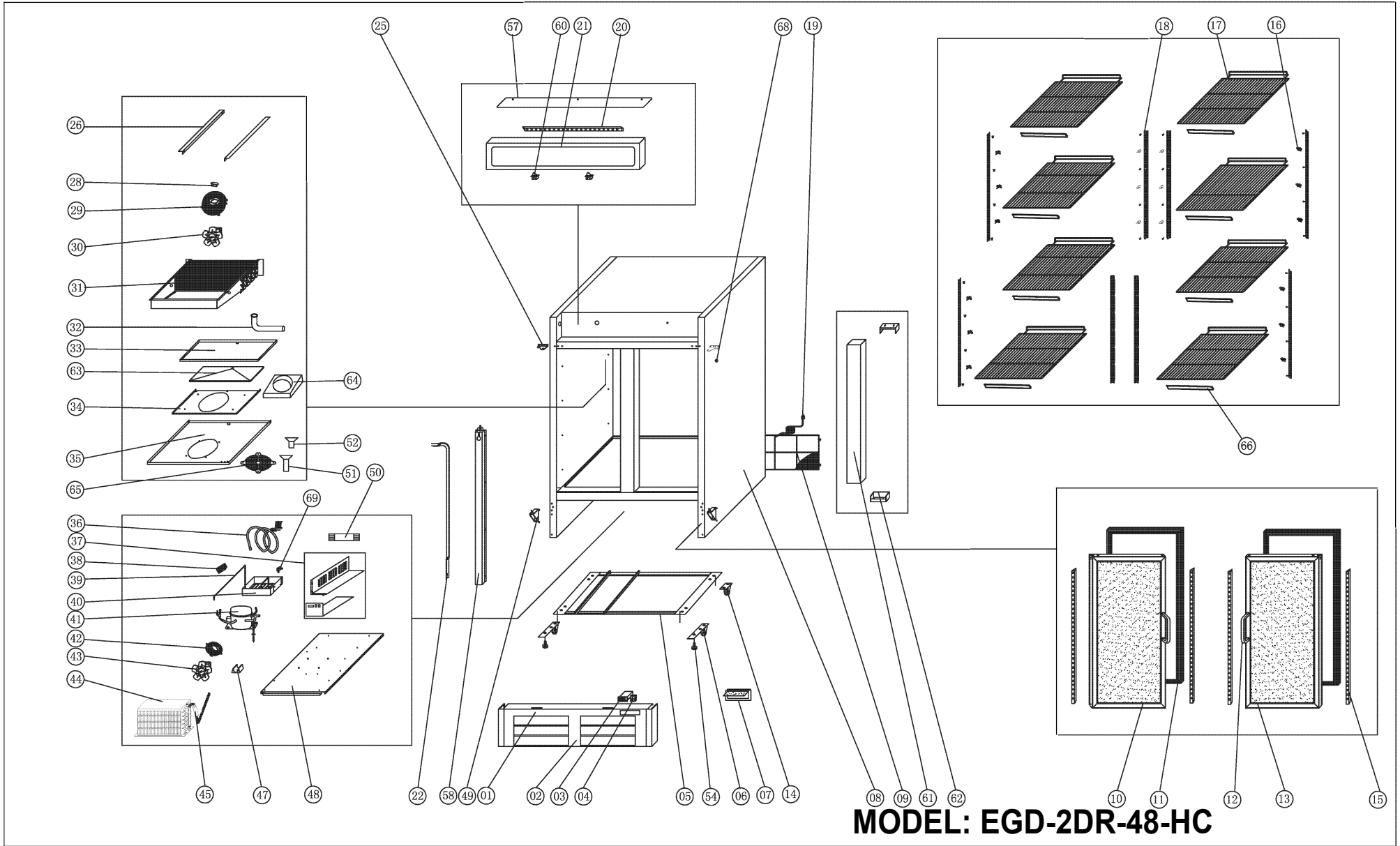
No.	PART #	DESCRIPTION	QTY	No.	PART #	DESCRIPTION	QTY
1	HC00357	KEY-DOOR, LOCK (SOLD IN PACK OF TWO)	2	36	HDV0014B	HELIX SUCTION PIPE+CAPILLARY B	1
2	HGD008726	SHROUD, LOWER FRONT (REPLACES H5114000216)	1	37	NON STOCKING	JUNCTION BOX	2
3	HC0204	CONTROLLER, DIXELL (XR60CX-4R0F1)	1	38	H00215	TERMINAL BLOCK, 5 POLE	1
4	C2194692	LIGHT SWITCH	1	39	HRI2002	EVAPORATE PIPE	1
5	G20037	FRONT WHEEL WITH LEVEL STOP	2	40	C30014	CONDENSER DRAIN BOX	1
6	BC1316	1" CASTER (REAR WHEEL, FIXED)	2	41	HC0014F	COMPRESSOR (SCE18CNLX) W/ FILTER DRIER	1
8	NON STOCKING	CABINET	1	41	HC0014K	START KIT FOR SCE18CNLX	1
9	H03315	COVER, LOWER REAR COMPARTMENT	1	41	H00304	CAPILLARY TUBE (.055" ID X 129.92" L)	1
10	G00011	DOOR, LEFT, GLASS	1	42	HC0113	CONDENSER FAN GUARD (V172-34)	2
11	GHC0036	GASKET (17 1/2" X 53 3/4")	2	43	H00125	CONDENSER FAN MOTOR, (BD03-04/CO6) (5W)	2
12	H107140020	GLASS DOOR HANDLE	2	44	HC0358	CONDENSER COIL	1
13	G00013	DOOR, RIGHT, GLASS	1	45	H00341	FILTER DRIER	1
13	GLED002L	LED STRIP(LEFT)	2	46	HDV010A	VERTICAL SUCTION PIPE+CAPILLARY A	1
13	GLED002R	LED STRIP(RIGHT)	2	48	NON STOCKING	CONDENER PANEL	1
15	GSCAP20130	L.E.D. START CAPACITOR (25uf)	2	49	GHC20041	HINGE, LOWER RIGHT & LEFT	1
16	C3234860	PILASTER CLIP	32	49	G20042	HINGE, LOWER LEFT	1
17	H109020008	SHELF (16.41" X 24.33")	8	50	GLED018	LED POWER SUPPLY (40WCN40-24, 24V)	1
18	H00342	PILASTER	8	51	H00336	DRAIN JOINT	1
19	C2194684	POWER CORD, 14AWG/NEMA 5-15P	1	52	H00212	DRAIN PIPE HEATER	1
20	GLED016	LED STRIP	1	53	NON STOCKING	PANEL	1
21	H5114000257	LAMP COVER	1	54	G20038	FRONT LEVEL STOP	2
22	NON STOCKING	AIR GUIDE	1	57	HGD003850	LAMP COVER PROTECTOR	1
24	NON STOCKING	SUPPORT PANEL	1	58	NON STOCKING	CHANNEL SUCTION LINE COVER	1
25	GHC20040	HINGE, UPPER RIGHT	1	59	G30002	DRAIN FITTING (FEMALE)	1
25	G20044	HINGE, UPPER LEFT	1	60	G30001	DRAIN PIPE FITTING (MALE)	1
26	NON STOCKING	EVAPORATOR SUPPORT GUIDE L OR R	1	63	HC0381	PLASTIC PROTECTION COVER	1
28	H00335	SENSOR CLIP	1	64	HC00116	CENTER MULLION	1
29	H00112	EVAPORATOR FAN GUARD, WHITE	1	65	HC00112-1	CENTER MULLION BRACKET (USE AFTER DATE 2201)	2
30	H00114-1	EVAPORATOR FAN MOTOR (7108-900RPM)	1	66	H00207	FUSE, THERMAL, DEFROST HEATER	1
31	HC0351F	EVAPORATOR COIL	1	67	HC10015	DOOR SWITCH	2
32	H00143.1	EVAPORATOR DRAIN PAN (USE AFTER 1409)	1	68	GHC40023	LABEL SUPPORT	8
33	HC0202	DEFROST HEATING ELEMENT	1	69	H00112-1	EVAPORATOR FAN GUARD	1
34	NON STOCKING	EVAPORATOR FAN SUPPORT	1	71	G20043	HINGE AXIS BUSHING	2
35	HC0160-1	EVAPORATOR FAN COVER, (REPLACES HC0160)	1	72	NON STOCKING	DRAIN BRACKET	1



MODEL: EGD-2DR-47-HC

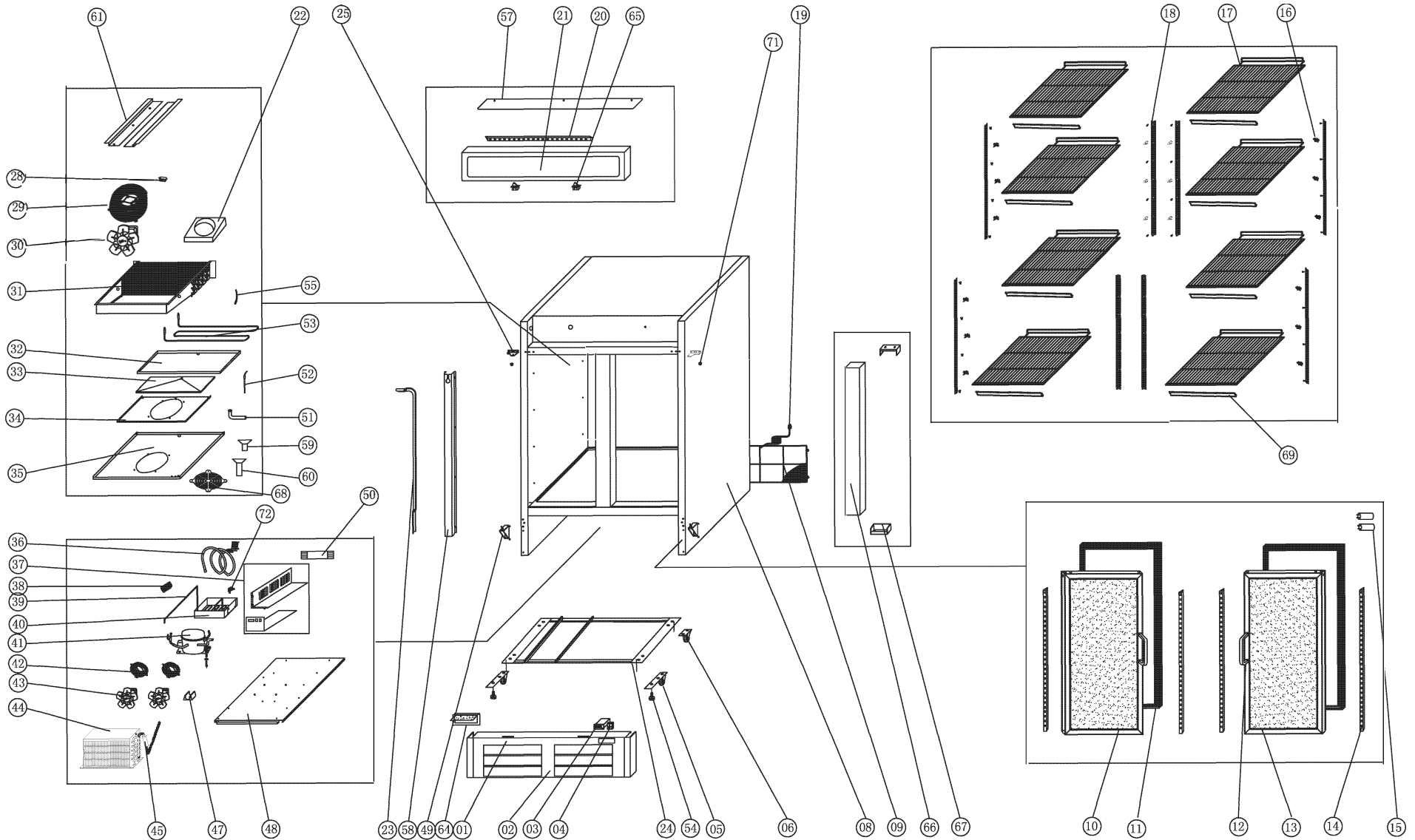
Parts List for Model: EGD-2DR-47-HC

No.	PART #	DESCRIPTION	QTY	No.	PART #	DESCRIPTION	QTY
2	HGD006797	SHROUD, LOWER FRONT (REPLACES H5114000943)	1	33	H00143.1	EVAPORATOR DRAIN PAN (USE AFTER 1409)	1
3	H00219-2	CONTROLLER, DIXELL (XR20CX-4R0F1)	1	34	NON STOCKING	EVAPORATOR FAN SUPPORT	1
4	C2194692	LIGHT SWITCH	1	35	HC0160-1	EVAPORATOR FAN COVER, (REPLACES HC0160)	1
5	NON STOCKING	SUPPORT PANEL	1	36	HDV0008B-1	HELIX SUCTION PIPE+CAPILLARY B	1
6	G20037	FRONT WHEEL WITH LEVEL STOP	2	38	H00215	TERMINAL BLOCK, 5 POLE	1
7	BC1316	1" CASTER (REAR WHEEL, FIXED)	2	39	GHC2022	DISCHARGE PIPE	1
8	NON STOCKING	CABINET	1	40	C30014	CONDENSER DRAIN BOX	1
9	G20034	COVER, LOWER REAR COMPARTMENT	1	41	H00039F	COMPRESSOR (EM2X3125U) W/ FILTER DRIER	1
10	BC30908	GLASS DOOR HANDLE	2	41	H00228	START KIT FOR EM2X3125U	1
11	GHC0003	DOOR, LEFT, GLASS, SLIDING	1	41	H01302	CAPILLARY TUBE (.055" ID X 118.1" L)	1
12	GHC0004	DOOR, RIGHT, GLASS, SLIDING	1	42	RD00111	CONDENSER FAN GUARD (V172-34)	1
13	GHC0047	GASKET (L=53 9/16")	2	43	H00110	CONDENSER FAN MOTOR, (CA27-04/CA01 L-600RPM)	1
14	G30018	SS SLIDING DOOR TRACK (FOUR PER UNIT)	4	44	HC0346-1	CONDENSER COIL, (REPLACES HC0346)	1
15	G30022	DOOR FRAME	1	45	H00341	DRIER FILTER	1
16	C3234860	PILASTER CLIP	32	46	H00303	VERTICAL SUCTION PIPE+CAPILLARY A	1
17	G20036	SHELF, SLIDING GLASS DOOR (24" X 24.2")	8	47	NON STOCKING	DRIER SUPPORT	1
18	H00342	PILASTER	8	48	NON STOCKING	CONDENSER PANEL	1
19	C2194681	POWER CORD, 18AWG/NEMA 5-15P	1	49	GLED018	LED POWER SUPPLY (40WCN40-24, 24V)	1
20	GLED017	LED STRIP	1	51	G20038	FRONT LEVEL STOP	2
21	GHC60147	LAMP COVER	1	52	G30002	DRAIN FITTING (FEMALE)	1
22	GLED007	LED STRIP	3	54	G30001	DRAIN PIPE FITTING (MALE)	1
23	NON STOCKING	AIR GUIDE	1	56	H00112-1	EVAPORATOR FAN GUARD	1
24	NON STOCKING	LAMP COVER SUPPORT	1	57	H107070096	DOOR PULLEY	4
26	NON STOCKING	EVAPORATOR SUPPORT GUIDE L OR R	2	58	HC00016	CENTER MULLION	1
28	H00335	SENSOR CLIP	1	59	NON STOCKING	CHANNEL SUCTION LINE COVER	1
29	H00112	EVAPORATOR FAN GUARD, WHITE	1	61	G30021	DOOR STOPPER	4
30	H00114-1	EVAPORATOR FAN MOTOR (7108-900RPM)	1	62	GHC40018	LABEL SUPPORT	8
31	HC0351R	EVAPORATOR COIL	1	64	NON STOCKING	DRAIN BRACKET	1
32	H00336	DRAIN JOINT	1				



Parts List for Model: EGD-2DR-48-HC

No.	PART #	DESCRIPTION	QTY	No.	PART #	DESCRIPTION	QTY
1	HC00357	KEY-DOOR, LOCK (SOLD IN PACK OF TWO)	2	35	HC0160-1	EVAPORATOR FAN COVER, (REPLACES HC0160)	1
2	HGD008747	SHROUD, LOWER FRONT (REPLACES H5114000671)	1	36	HDV0008B-1	HELIX SUCTION PIPE+CAPILLARY B	1
3	H00219-2	CONTROLLER, DIXELL (XR20CX-4R0F1)	1	37	NON STOCKING	JUNCTION BOX	1
4	C2194692	LIGHT SWITCH	1	38	H00215	TERMINAL BLOCK, 5 POLE	1
5	NON STOCKING	SUPPORT PANEL	1	39	GHC2022	DISCHARGE PIPE	1
6	G20037	FRONT WHEEL WITH LEVEL STOP	2	40	C30014	CONDENSER DRAIN BOX	1
7	HC0381	PLASTIC PROTECTION COVER	2	41	H00039F	COMPRESSOR (EM2X3125U) W/ FILTER DRIER	1
8	NON STOCKING	CABINET	1	41	H00228	START KIT FOR EM2X3125U	1
9	H00314-1	COVER, LOWER REAR COMPARTMENT (AFTER 2201)	1	41	H01302	CAPILLARY TUBE (.055" ID X 118.1" L)	1
10	GHCR002L	DOOR, LEFT, GLASS	1	42	RD00111	CONDENSER FAN GUARD (V172-34)	1
11	GHC0023-1	GASKET (25 3/16" X 54 1/4")	2	43	H00110	CONDENSER FAN MOTOR, (CA27-04/CA01 L-600RPM)	1
12	G20026	GLASS DOOR HANDLE	2	44	HC0346	CONDENSER COIL	1
13	GHCR01R	DOOR, RIGHT, GLASS	1	45	H00341	DRIER FILTER	1
14	BC1316	1" CASTER (REAR WHEEL, FIXED)	2	47	NON STOCKING	DRIER SUPPORT	1
15	GLED002L	LED STRIP (LEFT)	2	48	NON STOCKING	CONDENSER PANEL	1
15	GLED002R	LED STRIP (RIGHT)	2	49	GHC20041	HINGE, LOWER RIGHT & LEFT	1
16	C3234860	PILASTER CLIP	32	49	G20042	HINGE, LOWER LEFT	1
17	H00308-G	SHELF (23.62" X 24.33")	8	50	GLED018	LED POWER SUPPLY (40WCN40-24, 24V)	1
18	H00342	PILASTER	8	51	G30001	DRAIN PIPE FITTING (MALE)	1
19	C2194681	POWER CORD, 18AWG/NEMA 5-15P	1	52	G30002	DRAIN FITTING (FEMALE)	1
20	GLED017	LED STRIP	1	54	G20038	FRONT LEVEL STOP	2
21	H5114000672	LAMP COVER	1	55	NON STOCKING	EVAPORATOR SUPPORT GUIDE L OR R	2
22	H00303	VERTICAL SUCTION PIPE+CAPILLARY A	1	57	HGD008450	LAMP COVER PROTECTOR	1
25	GHC20040	HINGE, UPPER RIGHT	1	58	NON STOCKING	CHANNEL SUCTION LINE COVER	1
25	G20044	HINGE, UPPER LEFT	1	60	HC10015	DOOR SWITCH	2
26	NON STOCKING	EVAPORATOR SUPPORT GUIDE L OR R	1	61	HC00026-1	CENTER MULLION	1
28	H00335	SENSOR CLIP	1	62	HC00112-1	CENTER MULLION BRACKET (USE AFTER DATE 2201)	2
29	H00112	EVAPORATOR FAN GUARD, WHITE	1	63	NON STOCKING	PANEL	1
30	H00114-1	EVAPORATOR FAN MOTOR (7108-900RPM)	1	64	NON STOCKING	AIR GUIDE	1
31	HC0351R	EVAPORATOR COIL	1	65	H00112-1	EVAPORATOR FAN GUARD	1
32	H00336	DRAIN JOINT	1	66	GHC40018	LABEL SUPPORT	4
33	H00143.1	EVAPORATOR DRAIN PAN (USE AFTER 1409)	1	68	G20043	HINGE AXIS BUSHING	2
34	NON STOCKING	EVAPORATOR FAN SUPPORT	1	69	NON STOCKING	DRAIN BRACKET	1



MODEL: EGD-2DF-48-HC

Parts List for Model: EGD-2DF-48-HC

No.	PART #	DESCRIPTION	QTY	No.	PART #	DESCRIPTION	QTY
1	HC00357	KEY-DOOR, LOCK (SOLD IN PACK OF TWO)	2	36	HDV0014B	HELIX SUCTION PIPE+CAPILLARY B	1
2	HGD008747	SHROUD, LOWER FRONT (REPLACES H5114000671)	1	37	NON STOCKING	JUNCTION BOX	1
3	HC0204	CONTROLLER, DIXELL (XR60CX-4R0F1)	1	38	H00215	TERMINAL BLOCK, 5 POLE	1
4	C2194692	LIGHT SWITCH	1	39	HRI2002	DISCHARGE PIPE	1
5	G20037	FRONT WHEEL WITH LEVEL STOP	2	40	C30014	CONDENSER DRAIN BOX	1
6	BC1316	1" CASTER (REAR WHEEL, FIXED)	2	41	HC0014F	COMPRESSOR (SCE18CNLX) W/ FILTER DRIER	1
8	NON STOCKING	CABINET	1	41	HC0014K	START KIT FOR SCE18CNLX	1
9	H00314-1	COVER, LOWER REAR COMPARTMENT (AFTER 2201)	1	41	H00304	CAPILLARY TUBE (.055" ID X 129.92" L)	1
10	HGD020042	DOOR, LEFT, GLASS	1	42	HC0113	CONDENSER FAN GUARD (V172-34)	2
11	GHC0023-1	GASKET (25 3/16" X 54 1/4")	2	43	H00125	CONDENSER FAN MOTOR, (BD03-04/CO6) (5W)	2
12	G20026	GLASS DOOR HANDLE	2	44	HC0358	CONDENSER COIL	1
13	GHCF05R	DOOR, RIGHT, GLASS	1	45	H00341	DRIER FILTER	1
14	GLED002L	LED STRIP (LEFT)	2	47	NON STOCKING	DRIER SUPPORT	1
14	GLED002R	LED STRIP (RIGHT)	2	48	NON STOCKING	CONDENER PANEL	1
15	GLED006	LED POWER SUPPLY (35uf)	2	49	GHC20041	HINGE, LOWER RIGHT & LEFT	1
16	C3234860	PILASTER CLIP	32	49	G20042	HINGE, LOWER LEFT	1
17	H00308-G	SHELF (23.62" X 24.33")	8	50	GLED018	LED POWER SUPPLY (40WCN40-24, 24V)	1
18	H00342	PILASTER	8	51	H00336	DRAIN JOINT	1
19	C2194684	POWER CORD, 14AWG/NEMA 5-15P	1	52	H00212	DRAIN PIPE HEATER	1
20	GLED017	LED STRIP	1	53	HC0202	DEFROST HEATING ELEMENT	1
21	H5114000672	LAMP COVER	1	54	G20038	FRONT LEVEL STOP	2
22	NON STOCKING	AIR GUIDE	1	55	H00207	FUSE, THERMAL, DEFROST HEATER	1
23	HDV010A	VERTICAL SUCTION PIPE+CAPILLARY A	1	57	HGD008450	LAMP COVER PROTECTOR	1
24	NON STOCKING	SUPPORT PANEL	1	58	NON STOCKING	CHANNEL SUCTION LINE COVER	1
25	GHC20040	HINGE, UPPER RIGHT	1	59	G30002	DRAIN FITTING (FEMALE)	1
25	G20044	HINGE, UPPER LEFT	1	60	G30001	DRAIN PIPE FITTING (MALE)	1
26	NON STOCKING	EVAPORATOR SUPPORT GUIDE L OR R	2	61	NON STOCKING	EVAPORATOR SUPPORT GUIDE L OR R	2
28	H00335	SENSOR CLIP	1	64	HC0381	PLASTIC PROTECTION COVER	1
29	H00112	EVAPORATOR FAN GUARD, WHITE	1	65	HC10015	DOOR SWITCH	2
30	H00114-1	EVAPORATOR FAN MOTOR (7108-900RPM)	1	66	HC00116	CENTER MULLION	1
31	HC0351F	EVAPORATOR COIL	1	67	HC00112-1	CENTER MULLION BRACKET (USE AFTER DATE 2201)	2
32	H00143.1	EVAPORATOR DRAIN PAN (USE AFTER 1409)	1	68	H00112-1	EVAPORATOR FAN GUARD	1
33	NON STOCKING	PANEL	1	69	GHC40018	LABEL SUPPORT	8
34	NON STOCKING	EVAPORATOR FAN SUPPORT	1	71	G20043	HINGE AXIS BUSHING	2
35	HC0160-1	EVAPORATOR FAN COVER, (REPLACES HC0160)	1	72	NON STOCKING	DRAIN BRACKET	1



PARTS LIST

FOR MERCHANDISER MODELS: EGD-1DR-12-HC,
EGD-1DF-12-HC, EGD-1DR-16-HC, EGD-1DR-23-ES-HC, EGD-1DF-23-HC,
EGD-1DR-26-HC, EGD-1DF-26-HC, EGD-2DR-36-HC, EGD-2DF-36-HC,
EGD-2DR-47-HC, EGD-2DR-48-HC, EGD-2DF-48-HC



For Parts please Call (704) 900-2068

Revision Date (CWL): February 20, 2025