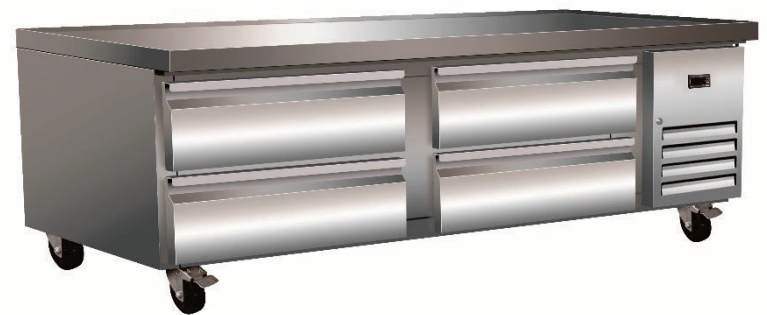
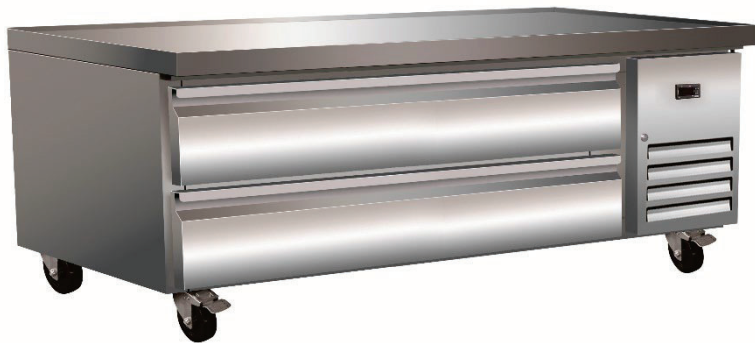




PARTS LIST

FOR CHEF BASE MODELS:

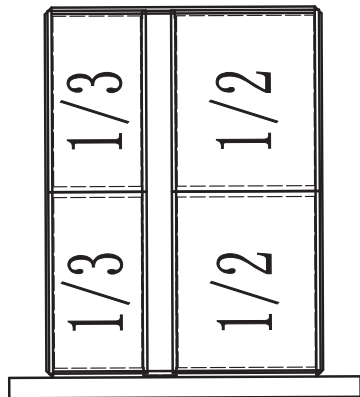
**CBR36-HD-HC, CBR48-HD-HC, CBR60-HD-HC,
CBR72-HD-HC**



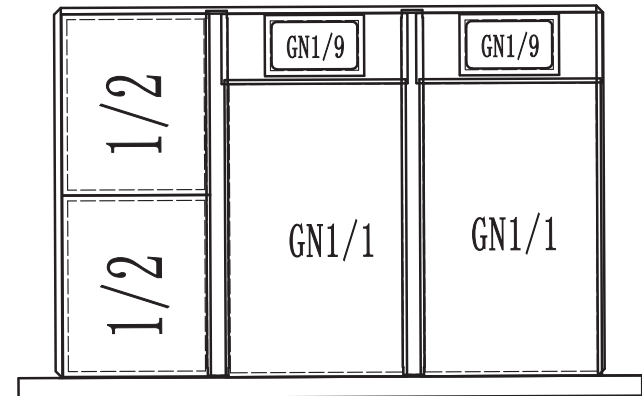
For Parts please Call (704) 900-2068

Revision Date: February 24, 2025

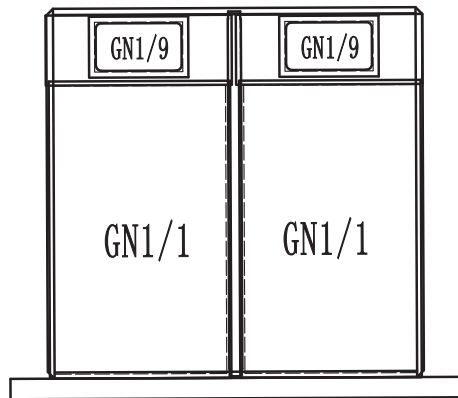
CBR36-HD



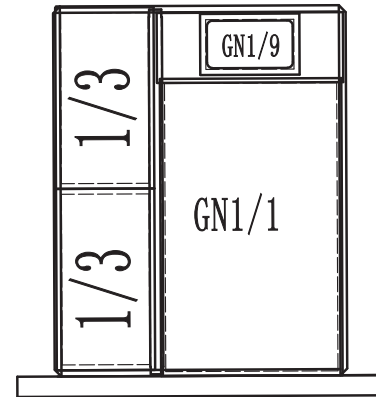
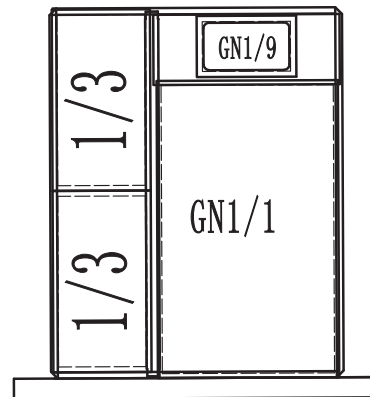
CBR60-HD



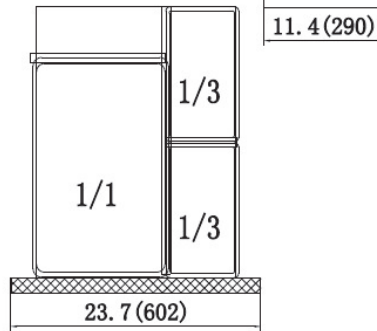
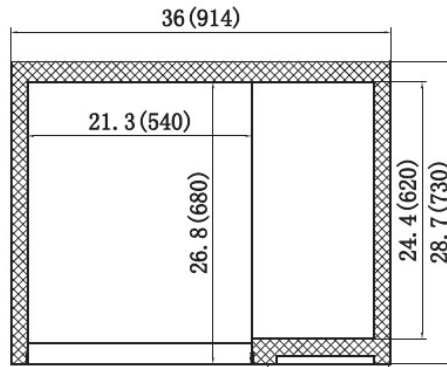
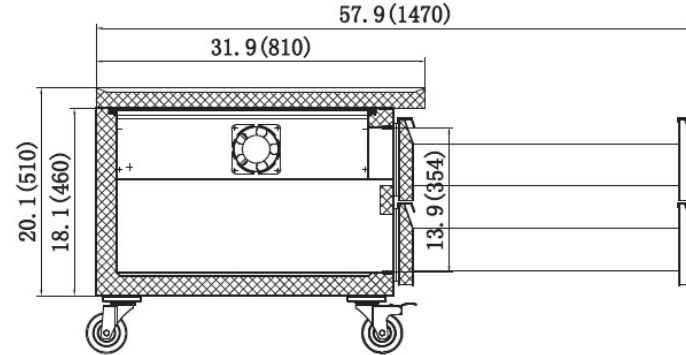
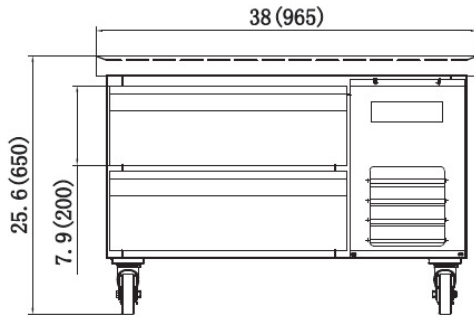
CBR48-HD



CBR72-HD

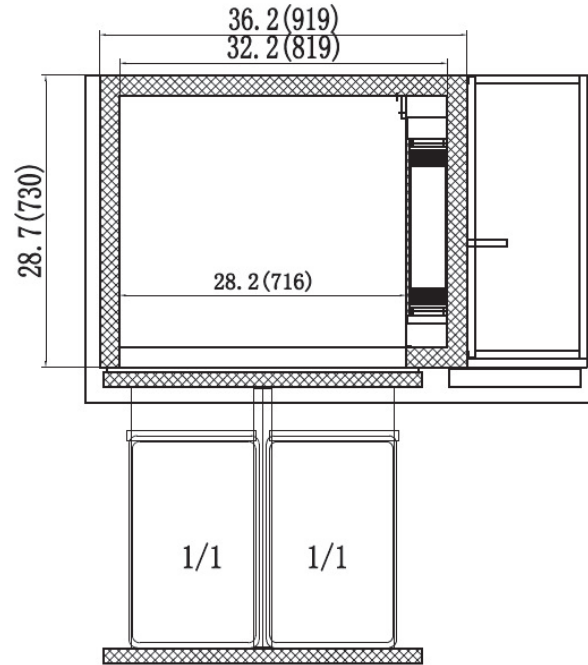
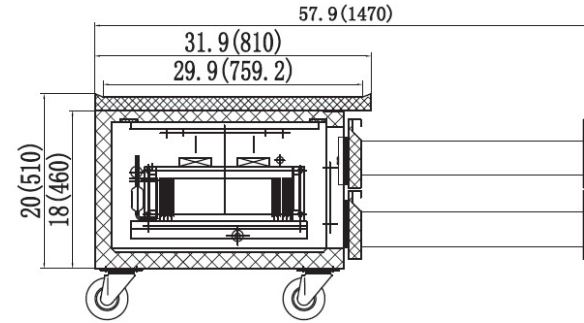
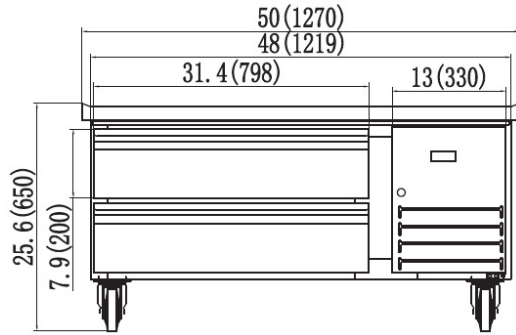


ECB36-HD-HC



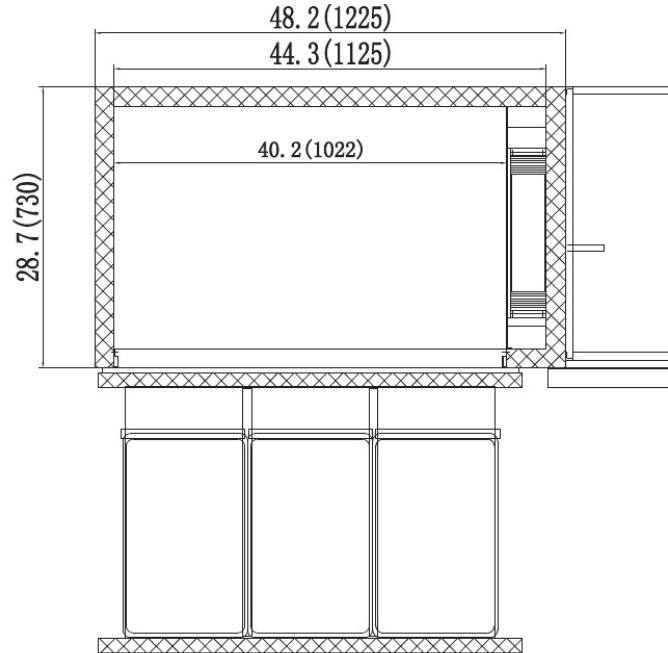
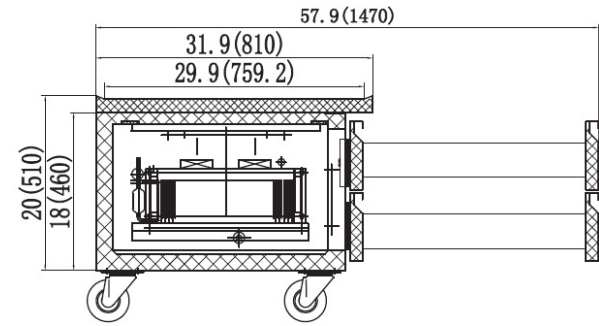
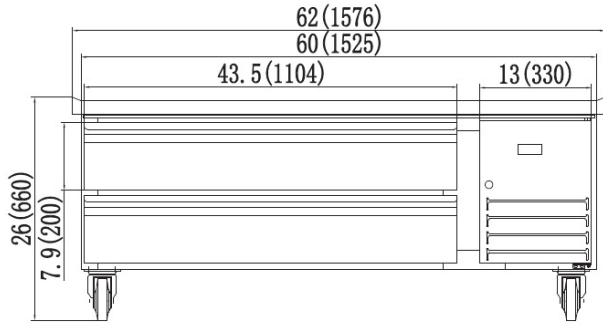
Model	Drawers	GN Pans	Cabinet Dim (inches)			HP	Voltage	Amps	NEMA Plug	Cord Length	Shipping Weight	Crated Dim (inches)		
			L	D	H							L	D	H
ECB36-HD-HC	2	2*1/1+4*1/6	38"	31.9"	25.6"	1/3	115/60/1	1.5	5-15P	8'	205	39.2"	32.8"	27.75"

ECB48-HD-HC



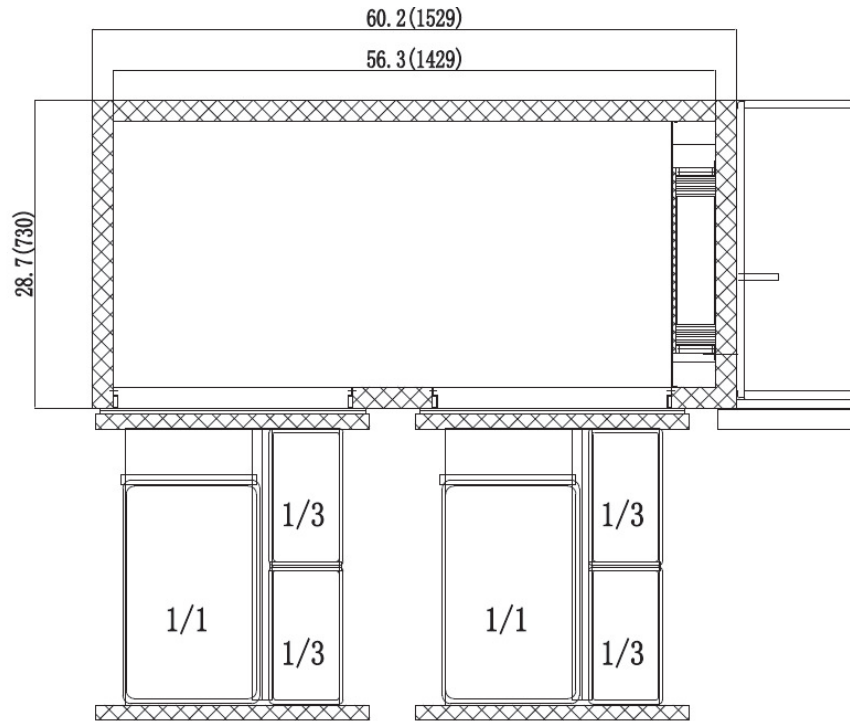
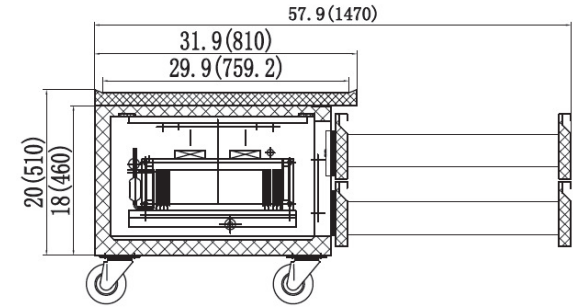
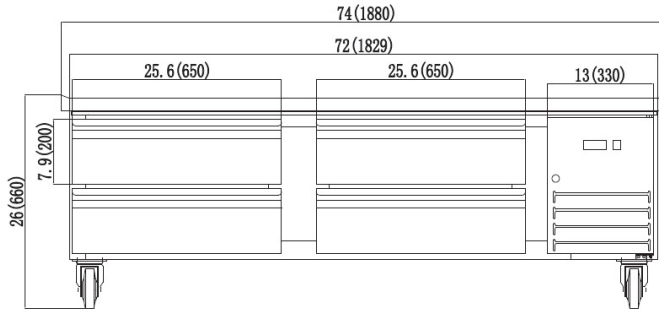
Model	Drawers	GN Pans	Cabinet Dim (inches)			HP	Voltage	Amps	NEMA Plug	Cord Length	Shipping Weight	Crated Dim (inches)		
			L	D	H							L	D	H
ECB48-HD-HC	2	4*1/1	50"	31.9"	25.6"	1/3	115/60/1	2.1	5-15P	8'	260	51.2"	33"	27.75"

ECB60-HD-HC



Model	Drawers	GN Pans	Cabinet Dim (inches)			HP	Voltage	Amps	NEMA Plug	Cord Length	Shipping Weight	Crated Dim (inches)		
			L	D	H							L	D	H
ECB60-HD-HC	2	6*1/1	62"	31.9"	26"	1/3	115/60/1	2.1	5-15P	8'	302	63.2"	33"	27.75"

ECB72-HD-HC



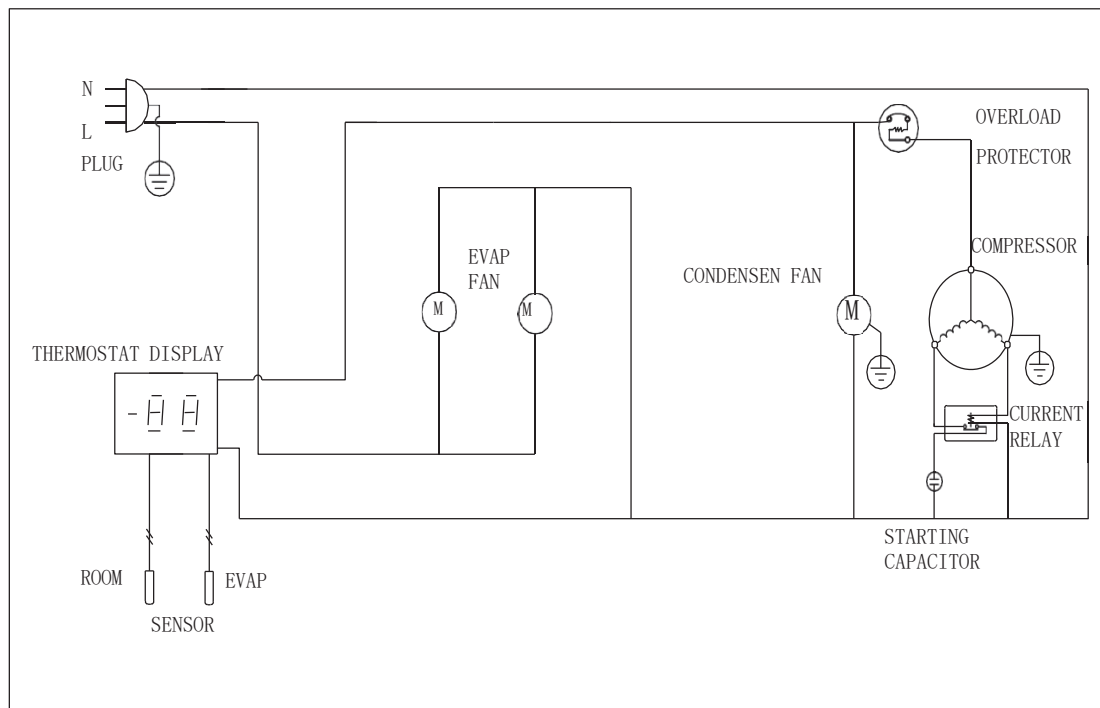
Model	Drawers	GN Pans	Cabinet Dim (inches)			HP	Voltage	Amps	NEMA Plug	Cord Length	Shipping Weight	Crated Dim (inches)		
			L	D	H							L	D	H
ECB72-HD-HC	4	4*1/1+4*1/3	74"	31.9"	26"	1/3	115/60/1	2.1	5-15P	8'	352	75.2"	33"	27.75"

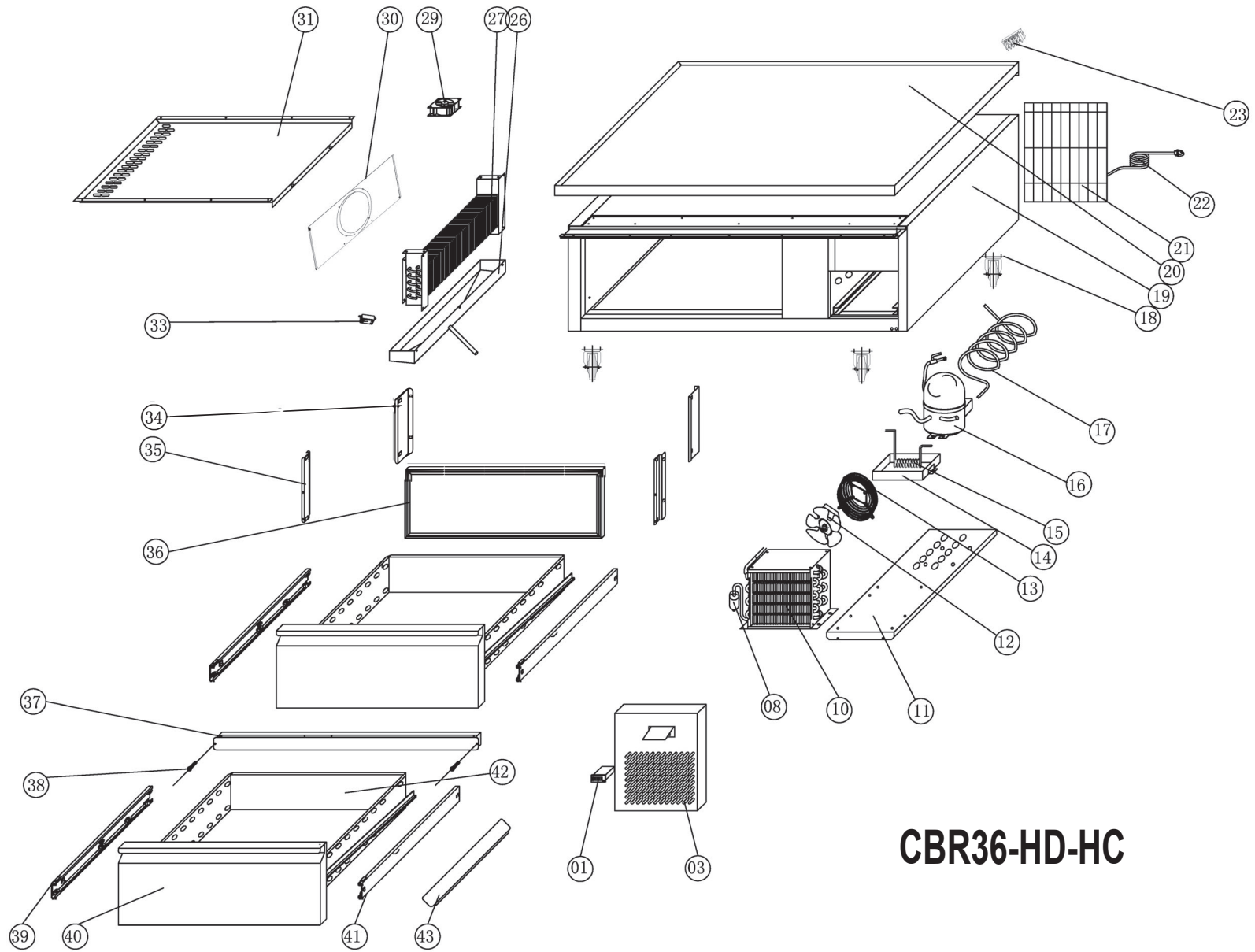
SPECIFICATION

MODEL#	V/Hz/Ph	AMPS	STORAGE CAPACITY Cu-ft	HP	BTU	CHARGE OZ	SHIP WEIGHT LBS	NEMA PLUG
CBR48-D-HC	115/60/1	2.1	6.5	1/3	3200	2.82	162	5-15P
CBR60-D-HC	115/60/1	2.1	8.8	1/3	3200	2.82	200	5-15P
CBR72-D-HC	115/60/1	2.1	11.1	1/3	5800	2.82	232	5-15P

WIRING DIAGRAM

MODEL: CBR48-D-HC/CBR60-D-HC/CBR72-D-HC

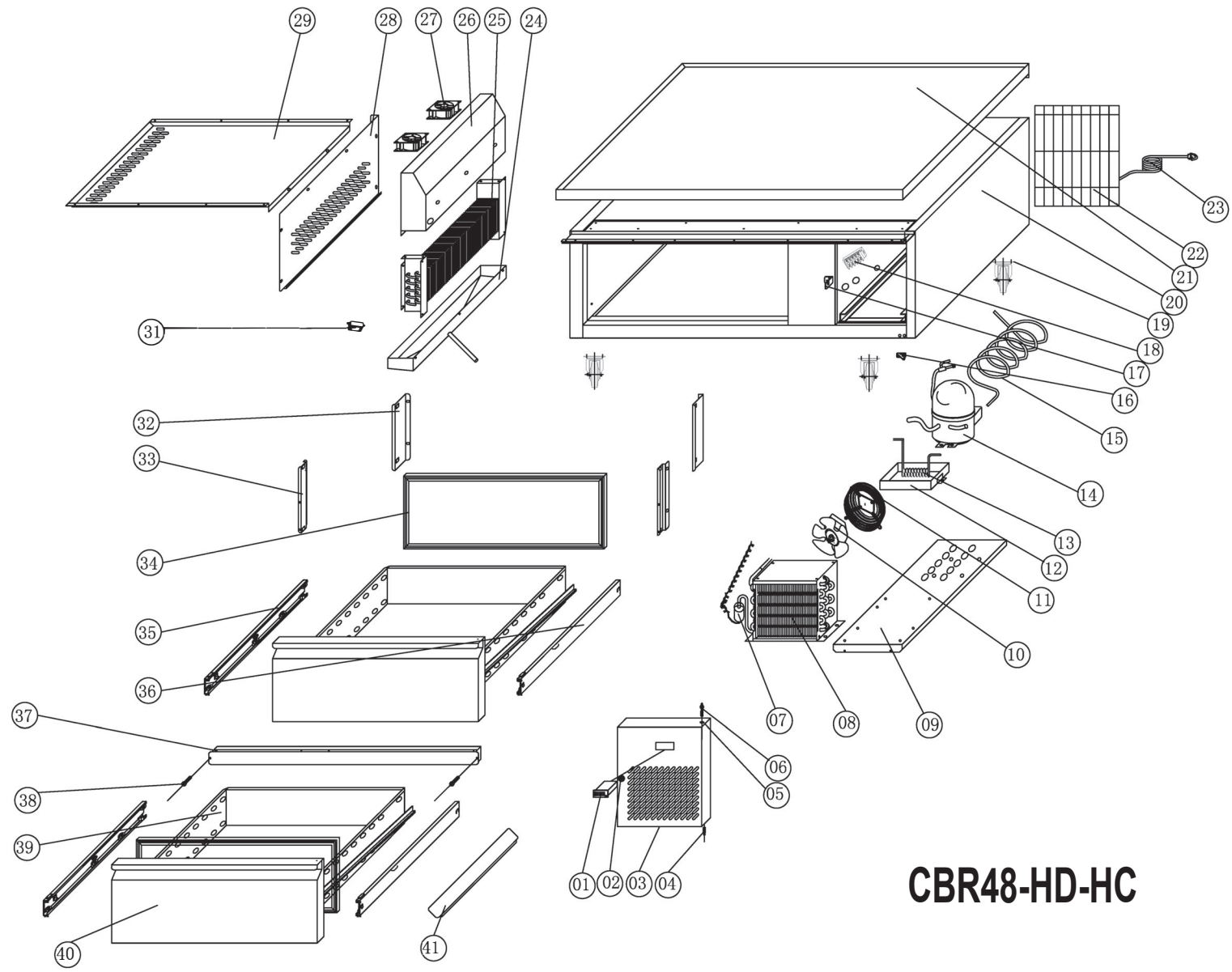




CBR36-HD-HC

Parts List for Model: CBR36-HD-HC

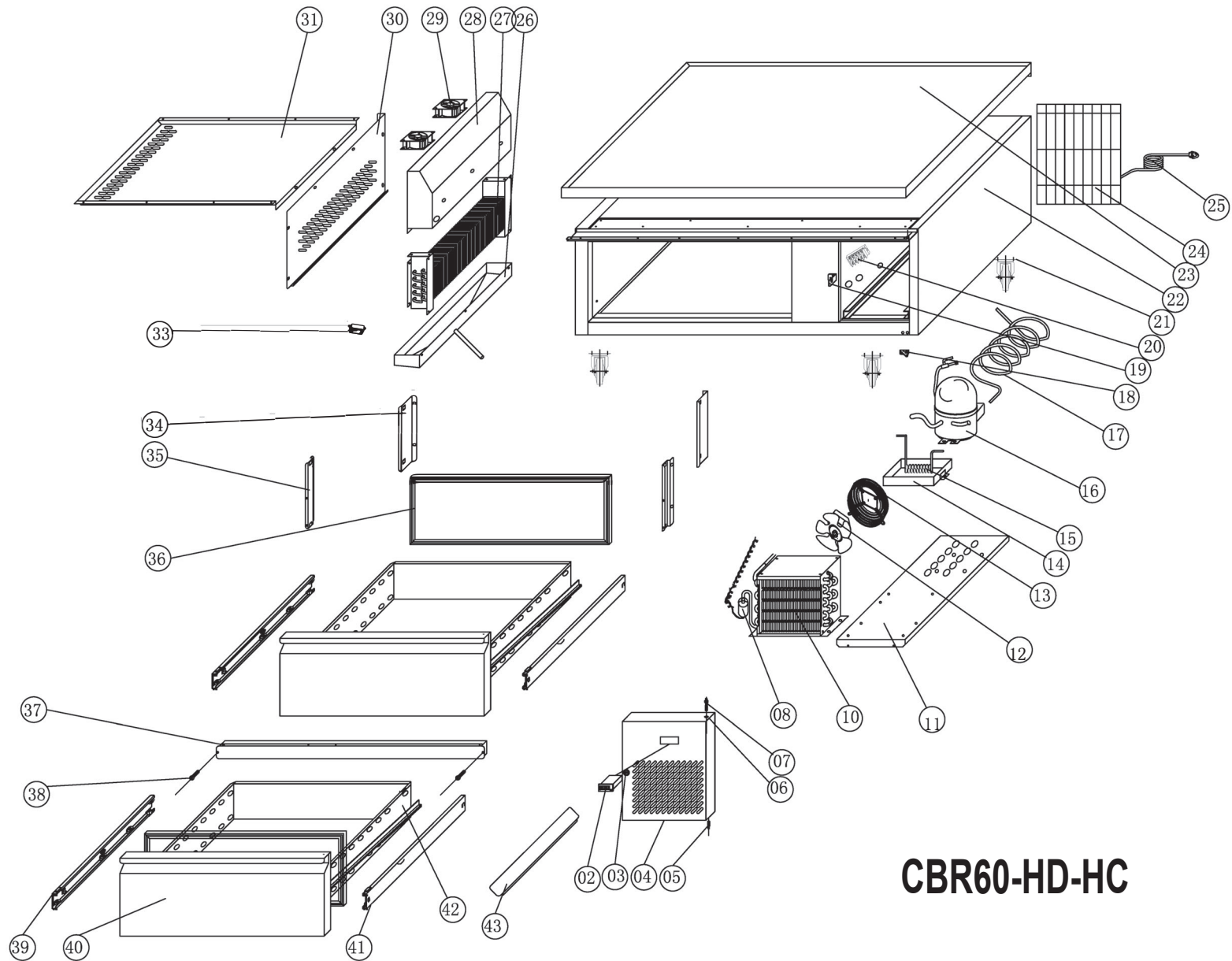
No.	PART #	DESCRIPTION	QTY	No.	PART #	DESCRIPTION	QTY
1	H00219-1	CONTROLLER, DIXELL, KIT (DISPLAY, CONTROL BOARD, TEMP SENSORS)	1	23	H00215	TERMINAL BLOCK, 5 POLE	1
3	RD3606-3	CONDENSER, FRONT COVER	1	26	RD3611	EVAPORATOR DRAIN PAN	1
8	RD0341	DRIER FILTER	1	27	RD3610	EVAPORATOR COIL	1
10	HC0347	CONDENSER COIL (G-SS45BT)	1	29	H01111	EVAPORATOR FAN MOTOR (1238 115V)	1
11	NON STOCKING	CONDENSER PANEL	1	30	RD3612	EVAPORATOR FAN SUPPORT	1
12	HC0162	CONDENSER FAN MOTOR, (CA27-04/CA01 L-600RPM)	1	31	RD3604	AIR FLOW CONDUCT PAN	1
13	RD00111	CONDENSER FAN GUARD	1	33	H03335	SENSOR FIXED CLIP	1
14	C30005	CONDENSER DRAIN PAN	1	34	RD4904	BACK SUPPORT RIGHT	1
15	RD10338	EVAPORATE PIPE	1	34	RD4905	BACK SUPPORT LEFT	1
16	HC0001F	COMPRESSOR (EM2X3117U) W/ FILTER DRIER	1	35	RD4906	FRONT SUPPORT RIGHT	1
16	HC0001K	START KIT FOR EM2X3117U	1	35	RD4907	FRONT SUPPORT LEFT	1
16	H03305	CAPILLARY TUBE (.045" ID X 118.11" L)	1	36	RD3602	GASKET, DRAWER	2
17	RD3608	SUCTION PIPE	1	37	RD3605	BRIDGE	1
18	RD4815	CASTER, SWIVEL, W/O BRAKE	2	38	RD0003	SCREW	2
18	RD4816	CASTER, SWIVEL, W/ BRAKE	2	39	RHD0001	GUIDE LEFT	2
19	NON STOCKING	CABINET	1	40	RD3606-1	DRAWER PANNEL	2
20	RHD00485	MAIN TOP (36")	1	41	RHD0002	GUIDE RIGHT	2
21	RD3613	REAR CONDENSER COVER	1	42	RD3606	DRAWER BODY	2
22	C2194681	POWER CORD, 18AWG/NEMA 5-15P	1	43	RD000527	PAN SUPORT - LONG (25.7" X 2.71")	2



CBR48-HD-HC

Parts List for Model: CBR48-HD-HC

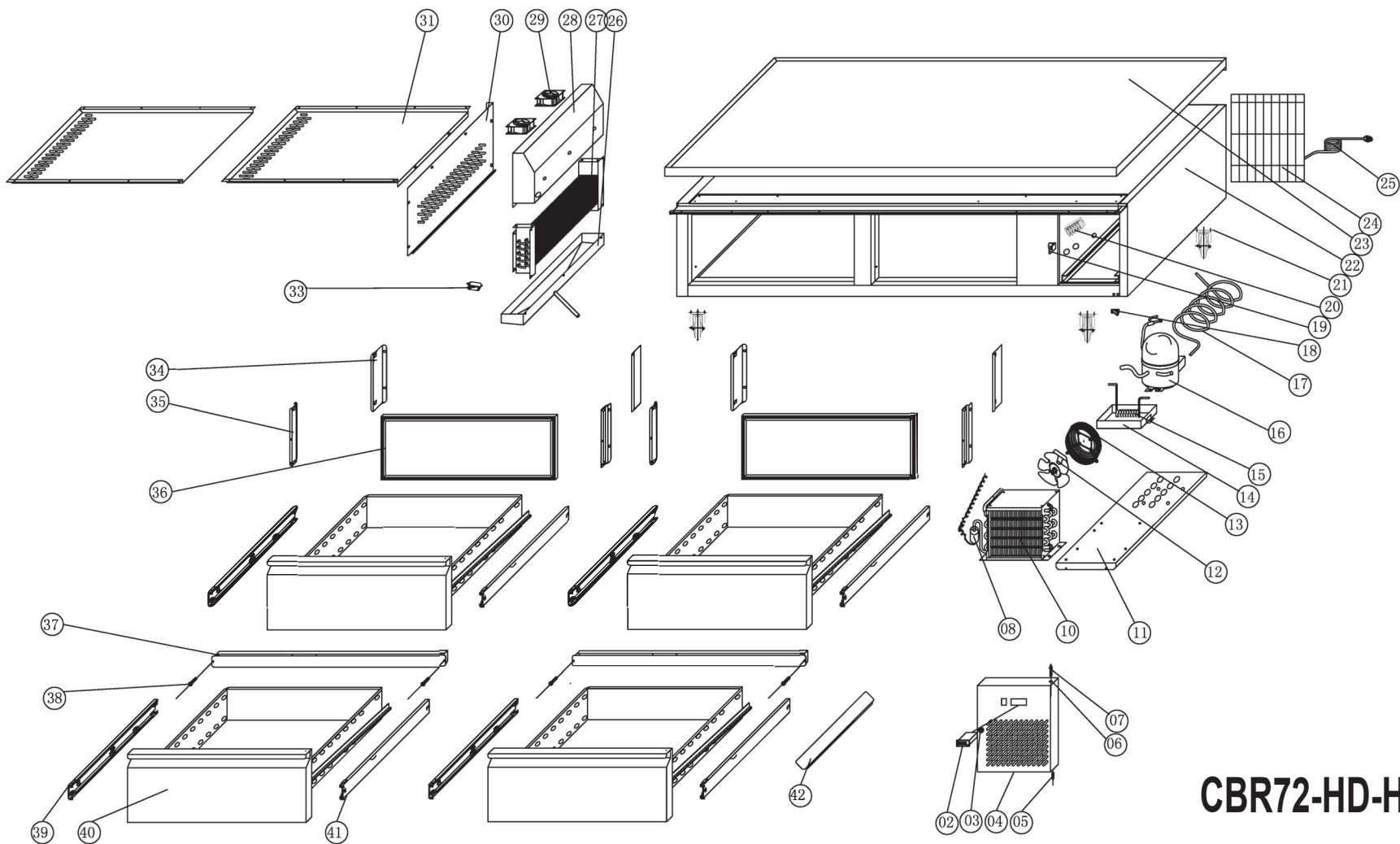
No.	PART #	DESCRIPTION	QTY	No.	PART #	DESCRIPTION	QTY
1	H00219-2	CONTROLLER, DIXELL (XR20CX-4R0F1)	1	21	RHD00405	MAIN TOP (48")	1
1	H00206	TEMPERATURE SENSOR NTC TYPE, LONG	1	22	RD4813	REAR CONDENSER COVER	1
2	RD0340	DOOR LOCK W/2 KEYS	1	23	C2194681	POWER CORD, 18AWG/NEMA 5-15P	1
3	RD4807-2	CONDENSER, FRONT COVER	1	24	RD4811.1	EVAPORATOR DRAIN PAN	1
4	H05327	HINGE PIN	2	25	RD4810	EVAPORATOR COIL	1
5	H00327B	HINGE BUSHING	2	26	NON STOCKING	FAN SUPPORT	1
5	H00327	HINGE PIN W/NUT & BUSHING	2	27	RD0110	EVAPORATOR FAN MOTOR (9225 115V)	2
6	RD0003-N	NUT	2	28	RD4803	EVAPORATOR COVER	1
7	RD0341	DRIER FILTER	1	29	RD4804	AIR FLOW CONDUCT PAN	1
8	HC0347	CONDENSER COIL (G-SS45BT)	1	31	H03335	SENSOR FIXED CLIP	1
9	NON STOCKING	CONDENSER PANEL	1	32	RD4904	BACK SUPPORT RIGHT	1
10	HC0162	CONDENSER FAN MOTOR, (CA27-04/CA01 L-600RPM)	1	32	RD4905	BACK SUPPORT LEFT	1
11	RD00111	CONDENSER FAN GUARD	1	33	RD4906	FRONT SUPPORT RIGHT	1
12	C30005	CONDENSER DRAIN PAN	1	33	RD4907	FRONT SUPPORT LEFT	1
13	RD4809-1	EVAPORATE PIPE	1	34	RD4802	GASKET, DRAWER	2
14	HC0001F	COMPRESSOR (EM2X3117U) W/ FILTER DRIER	1	35	RHD0001	GUIDE LEFT	2
14	HC0001K	START KIT FOR EM2X3117U	1	36	RHD0002	GUIDE RIGHT	2
14	H03305	CAPILLARY TUBE (.045" ID X 118.11" L)	1	37	RD4805	BRIDGE	1
15	HC0161	SUCTION PIPE	1	38	RD0003	SCREW	2
16	RD03327	CONDENSER, FRONT COVER HINGE	1	39	RD4806-7	DRAWER BODY (REPLACES RD4806-3)	2
17	H00343	DOOR LOCK HOOK	1	39	RD4806-3	DRAWER BODY (REPLACED WITH RD4806-7)	2
18	H00215	TERMINAL BLOCK, 5 POLE	1	40	RD4806-6	DRAWER PANNEL (REPLACES RD4806)	2
19	RD4815	CASTER, SWIVEL, W/O BRAKE	2	40	RD4806	DRAWER PANNEL (REPLACE WITH RD4806-7)	2
19	RD4816	CASTER, SWIVEL, W/ BRAKE	2	41	RD000528	PAN SUPORT - LONG (25.7" X 1.42")	2
20	NON STOCKING	CABINET	1	41	RD000530	PAN SUPORT - SHORT (12.8" X 4.88")	4



CBR60-HD-HC

Parts List for Model: CBR60-HD-HC

No.	PART #	DESCRIPTION	QTY	No.	PART #	DESCRIPTION	QTY
2	H00219-2	CONTROLLER, DIXELL (XR20CX-4R0F1)	1	22	NON STOCKING	CABINET	1
2	H00206	TEMPERATURE SENSOR NTC TYPE, LONG	1	23	RHD00407	MAIN TOP (60")	1
3	RD0340	DOOR LOCK W/2 KEYS	1	24	RD4813	REAR CONDENSER COVER	1
4	RD4807-2	CONDENSER, FRONT COVER	1	25	C2194681	POWER CORD, 18AWG/NEMA 5-15P	1
5	H05327	HINGE PIN	2	26	RD4811.1	EVAPORATOR DRAIN PAN	1
6	H00327B	HINGE BUSHING	2	27	RD4810	EVAPORATOR COIL	1
6	H00327	HINGE PIN W/NUT & BUSHING	2	28	NON STOCKING	FAN SUPPORT	1
7	RD0003-N	NUT	2	29	RD0110	EVAPORATOR FAN MOTOR (9225 115V)	2
8	RD0341	DRIER FILTER	1	30	RD4803	EVAPORATOR COVER	1
10	HC0347	CONDENSER COIL (G-SS45BT)	1	31	RD6004	AIR FLOW CONDUCT PAN	1
11	NON STOCKING	CONDENSER PANEL	1	33	H03335	SENSOR FIXED CLIP	1
12	HC0162	CONDENSER FAN MOTOR, (CA27-04/CA01 L-600RPM)	1	34	RD4905	BACK SUPPORT RIGHT/LEFT	1
13	RD00111	CONDENSER FAN GUARD	1	35	RD4907	FRONT SUPPORT RIGHT/LEFT	1
14	C30005	CONDENSER DRAIN PAN	1	36	RD6002	GASKET, DRAWER (42" X 8 5/8" OD)	2
15	RD4809-1	EVAPORATE PIPE	1	37	RD6005	BRIDGE	1
16	HC0001F	COMPRESSOR (EM2X3117U) W/ FILTER DRIER	1	38	RD0003	SCREW	2
16	HC0001K	START KIT FOR EM2X3117U	1	39	RHD0001	GUIDE LEFT	2
16	H03305	CAPILLARY TUBE (.045" ID X 118.11" L)	1	40	RD6006-6	DRAWER PANNEL (REPLACES RD6006-5)	2
17	HC0161	SUCTION PIPE	1	40	RD6006-5	DRAWER PANNEL (REPLACED WITH RD6006-7)	2
18	RD03327	CONDENSER, FRONT COVER HINGE	1	41	RHD0002	GUIDE RIGHT	2
19	H00343	DOOR LOCK HOOK	1	42	RD6006	DRAWER BODY	2
20	H00215	TERMINAL BLOCK, 5 POLE	1	43	RD000529	PAN SUPORT - LONG (25.7" X 1.97")	4
21	RD4815	CASTER, SWIVEL, W/O BRAKE	2	43	RD000530	PAN SUPORT - SHORT (12.8" X 4.88")	4
21	RD4816	CASTER, SWIVEL, W/ BRAKE	2				



CBR72-HD-HC

Parts List for Model: CBR72-HD-HC

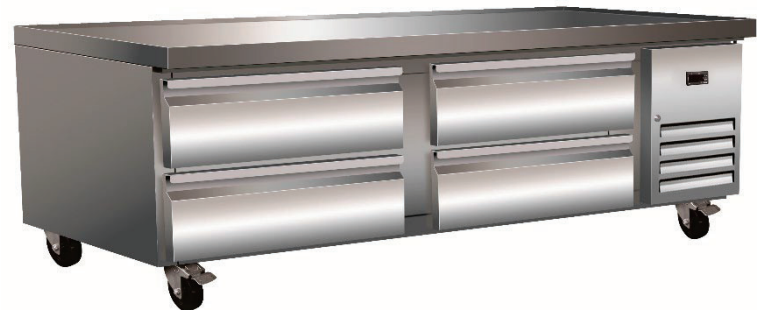
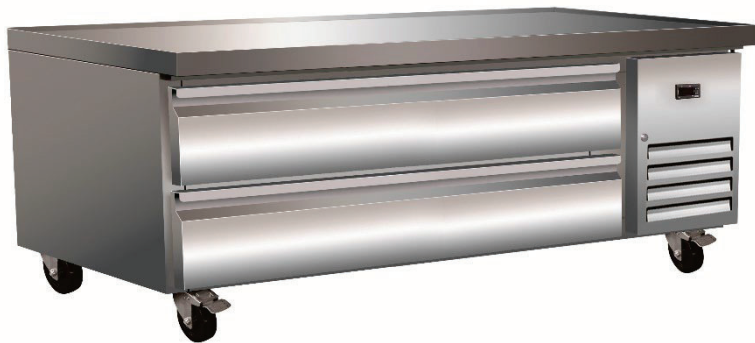
No.	PART #	DESCRIPTION	QTY	No.	PART #	DESCRIPTION	QTY
2	H00219-2	CONTROLLER, DIXELL (XR20CX-4R0F1)	1	22	NON STOCKING	CABINET	1
2	H00206	TEMPERATURE SENSOR NTC TYPE, LONG	1	23	RHD00409	MAIN TOP (72")	1
3	RD0340	DOOR LOCK W/2 KEYS	1	24	RD4813	REAR CONDENSER COVER	1
4	RD7207	CONDENSER, FRONT COVER	1	25	C2194681	POWER CORD, 18AWG/NEMA 5-15P	1
5	H05327	HINGE PIN	2	26	RD4811.1	EVAPORATOR DRAIN PAN	1
6	H00327B	HINGE BUSHING	2	27	RD4810	EVAPORATOR COIL	1
6	H00327	HINGE PIN W/NUT & BUSHING	2	28	NON STOCKING	FAN SUPPORT	1
7	RD0003-N	NUT	2	29	RD0110	EVAPORATOR FAN MOTOR (9225 115V)	2
8	RD0341	DRIER FILTER	1	30	RD4803	EVAPORATOR COVER	1
10	HC0347	CONDENSER COIL (G-SS45BT)	1	31	RD7204	AIR FLOW CONDUCT PAN	1
11	NON STOCKING	CONDENSER PANEL	1	31	RD7204-1	AIR FLOW CONDUCT PAN	1
12	HC0162	CONDENSER FAN MOTOR, (CA27-04/CA01 L-600RPM)	1	33	H03335	SENSOR FIXED CLIP	1
13	RD00111	CONDENSER FAN GUARD	1	34	RD4905	BACK SUPPORT RIGHT/LEFT	2
14	C30005	CONDENSER DRAIN PAN	1	35	RD4907	FRONT SUPPORT RIGHT/LEFT	2
15	RD4809-1	EVAPORATE PIPE	1	36	RD7202	GASKET, DRAWER	4
16	HC0001F	COMPRESSOR (EM2X3117U) W/ FILTER DRIER	1	37	RD7205	BRIDGE	2
16	HC0001K	START KIT FOR EM2X3117U	1	38	RD0003	SCREW	4
16	H03305	CAPILLARY TUBE (.045" ID X 118.11" L)	1	39	RHD0001	GUIDE LEFT	4
17	HC0161	SUCTION PIPE	1	40	RD7206-6	DRAWER PANNEL	4
18	RD03327	CONDENSER, FRONT COVER HINGE	1	40	RD7206-7	DRAWER PANNEL (REPLACES RD7206-6)	4
19	H00343	DOOR LOCK HOOK	1	40	RD7206-6	DRAWER PANNEL (REPLACED BY RD7206-7)	4
20	H00215	TERMINAL BLOCK, 5 POLE	1	40	RD7206-3	DRAWER BODY	4
21	RD4815	CASTER, SWIVEL, W/O BRAKE	3	41	RHD0002	GUIDE RIGHT	4
21	RD4816	CASTER, SWIVEL, W/ BRAKE	3	42	RD000528	PAN SUPORT - LONG (25.7" X 1.42")	4
				42	RD000530	PAN SUPORT - SHORT (12.8" X 4.88")	4



PARTS LIST

FOR CHEF BASE MODELS:

**CBR36-HD-HC, CBR48-HD-HC, CBR60-HD-HC,
CBR72-HD-HC**



For Parts please Call (704) 900-2068

Revision Date (CWL): February 24, 2025