



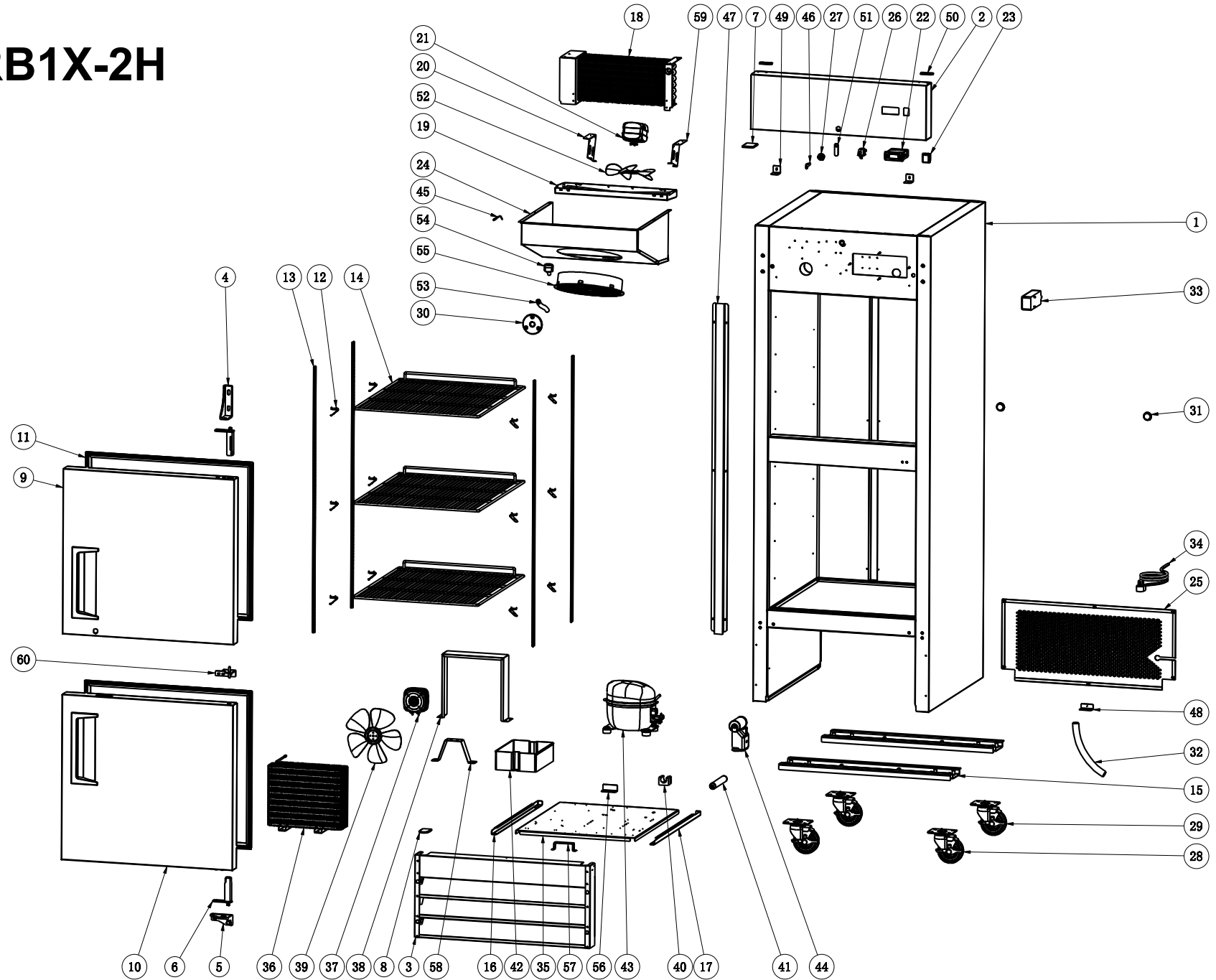
**Entrée Half Door Reach-In Models:
ERB1X-2H ERB2X-4H ERB3X-6H
EFB1X-2H EFB2X-4H EFB3X-6H**



PHONE: 704-900-2068
Website: www.entree.biz

REV. 20241119

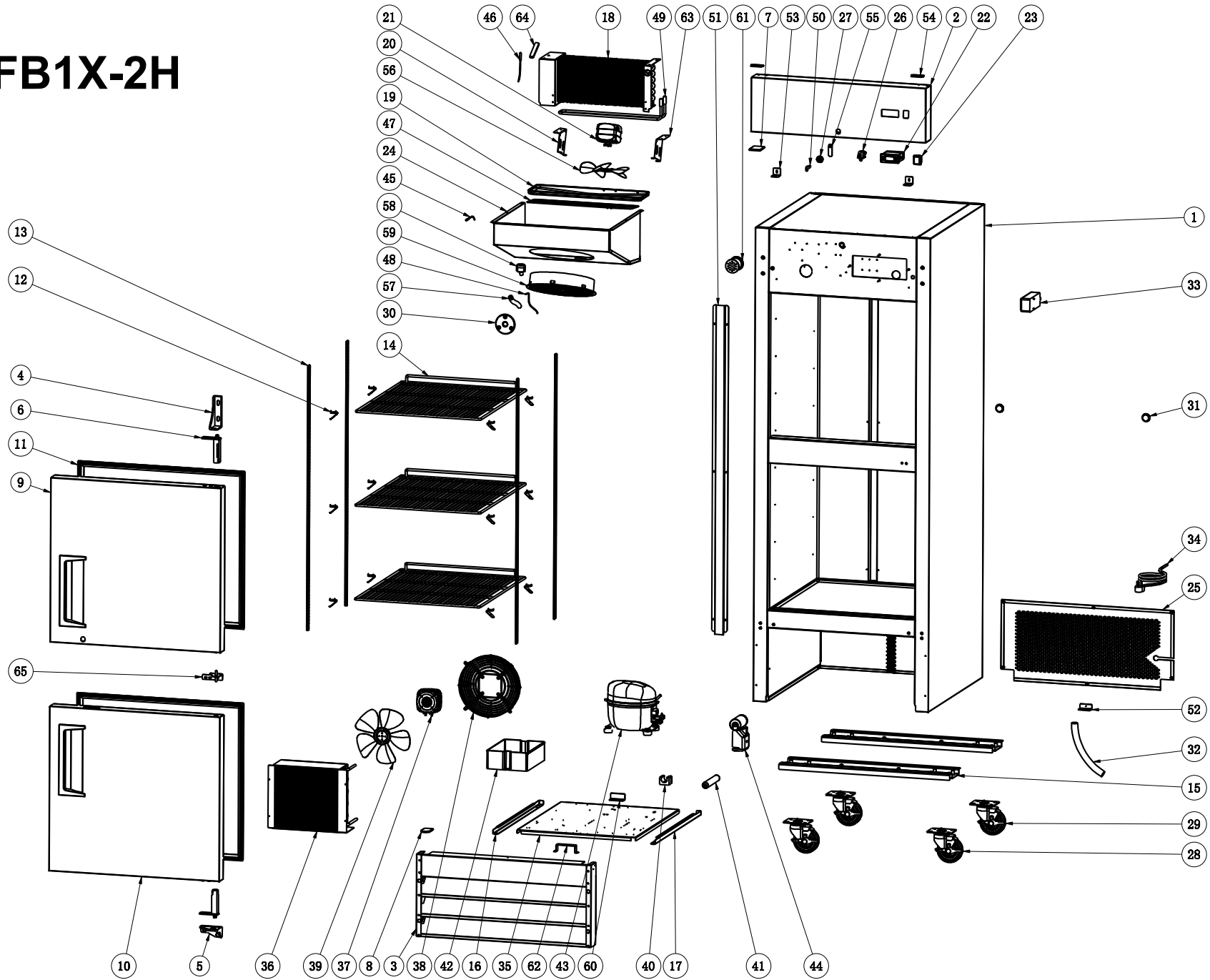
ERB1X-2H



PARTS LIST ERB1X-2H

No.	PART #	DESCRIPTION	QTY	No.	PART #	DESCRIPTION	QTY
1	NONSTOCKING	CABINET	1	32	XRI0024	DRAIN HOSE	1
2	X2199001373	UPPER FRONT SHROUD (1 GLASS DOOR)	1	33	XRI0048-HC	LIGHT COMPONENTS	1
3	X2199001374	LOWER FRONT SHROUD (1 DOOR)	1	34	XRI0054	POWER CORD, NEMA 5-15P (14 AWG, APPX 8" LONG)	1
4	XX-URH005	HINGE, UPPER RIGHT	1	35	NON STOCKING	COMPRESSOR UNIT INSTALLATION BOARD	1
5	XX-BRH005	HINGE, BOTTOM RIGHT	1	36	XRI0119R	CONDENSER COIL	1
6	XX-DC0328	HINGE CARTRIDGE, SELF CLOSING	2	37	XRI000032	FAN MOTOR (YZ10-20/10/55) (Alternate for X17701000014) (BLADE #XRI0015 SOLD SEPARATELY)	1
7	XRI0003	TOP/BOTTOM COVER FOR REVERSIBLE DOOR	1	38	NON STOCKING	AIR GUIDE SHEET	1
8	XRI0003	TOP/BOTTOM COVER FOR REVERSIBLE DOOR	1	39	XRI0015	BLADE OF FAN MOTOR	1
9	XRIHD2251	DOOR, UPPER RIGHT	1	40	XX-H00346	FILTER BRACKET	1
10	XRIHD2252	DOOR, BOTTOM RIGHT	1	41	XX-H00341	FILTER DRIER	1
11	XRI680632	DOOR GASKET (26.85" X 24.88")	2	42	X16316130008	OUTER DRAIN PAN	1
12	X5302000003	SHELF CLIP	12	*	X250009	CAP TUBE (.035" I.D. X 98.5" L)	1
13	XRI0005	K STRIP	4	43	XX-HC0029	COMPRESSOR C/W STARTING COMPONENTS (EMX3117U/115V/R290)	1
14	XRI590601	SHELF (23.23" X 23.62")	3	44	XX-HC0029K	STARTING COMPONENTS FOR EMX3117U	1
15	NONSTOCKING	LEG SUPPORTER	2	45	XRI0036	TEMPERATURE SENSOR OF CABINET INSIDE	1
16	NONSTOCKING	LEFT TRACK FOR ASSEMBLING PANEL	1	46	XX-H00340	LOCK & SET OF 2 KEYS	1
17	NON STOCKING	RIGHT TRACK FOR ASSEMBLING PANEL	1	47	NONSTOCKING	BAFFLE OF SUCTION LINE	1
18	XRI070370	EVAPORATOR (4R7K370L)	1	48	NON STOCKING	BACK GRILL BRACKET	1
19	XRI180148	INNER DRAIN PAN	1	49	NON STOCKING	CONTROL PANEL BRACKET	2
20	NONSTOCKING	LEFT EVAPORATOR FAN MOTOR BRACKET	1	50	XRI0084	HINGE, UPPER SHROUD	2
21	XRI000032	FAN MOTOR (YZ10-20/10/55) (Alternate for X17701000014) (BLADE #XRI0015 SOLD SEPARATELY)	1	51	SEE LOCK	LOCK BOLT	1
22	XGM180005	THERMOSTAT (PYGX1Z0501/115VAC)	1	52	XRI0015	BLADE OF FAN MOTOR	1
23	XRI0056	POWER SWITCH (RED)	1	53	XRI0071	DRAIN HOSE	1
24	XRI0080-1	EVAPORATOR COVER (USE AFTER 01/2022)	1	54	XRI0073	ELBOW PIPE	1
25	XRI0002-1	BACK GRILL (USE AFTER DATE 01-2022)	1	55	X16313130154	EVAPORATOR FAN MOTOR COVER	1
26	X-2194677	DOOR SWITCH	1	56	NON STOCKING	LIMITED BLOCK OF INSTALLATION BOARD	1
27	XX-H00340	LOCK & SET OF 2 KEYS	1	57	NON STOCKING	COMPRESSOR UNIT HANDLE	1
28	XX-SCB319	4" CASTER W/BRAKE	2	58	X2199001370	CONDENSER FAN MOTOR BRACKET	1
29	XX-SC0319	4" CASTER W/O BRAKE	2	59	NON STOCKING	RIGHT EVAPORATOR FAN MOTOR BRACKET	1
30	XX000430	DRAIN PLUG	1	60	XRI800176	HINGE, MIDDLE RIGHT	1
31	X16352020002	FOAMING HOLE COVER	2	*	NOT SHOWN		

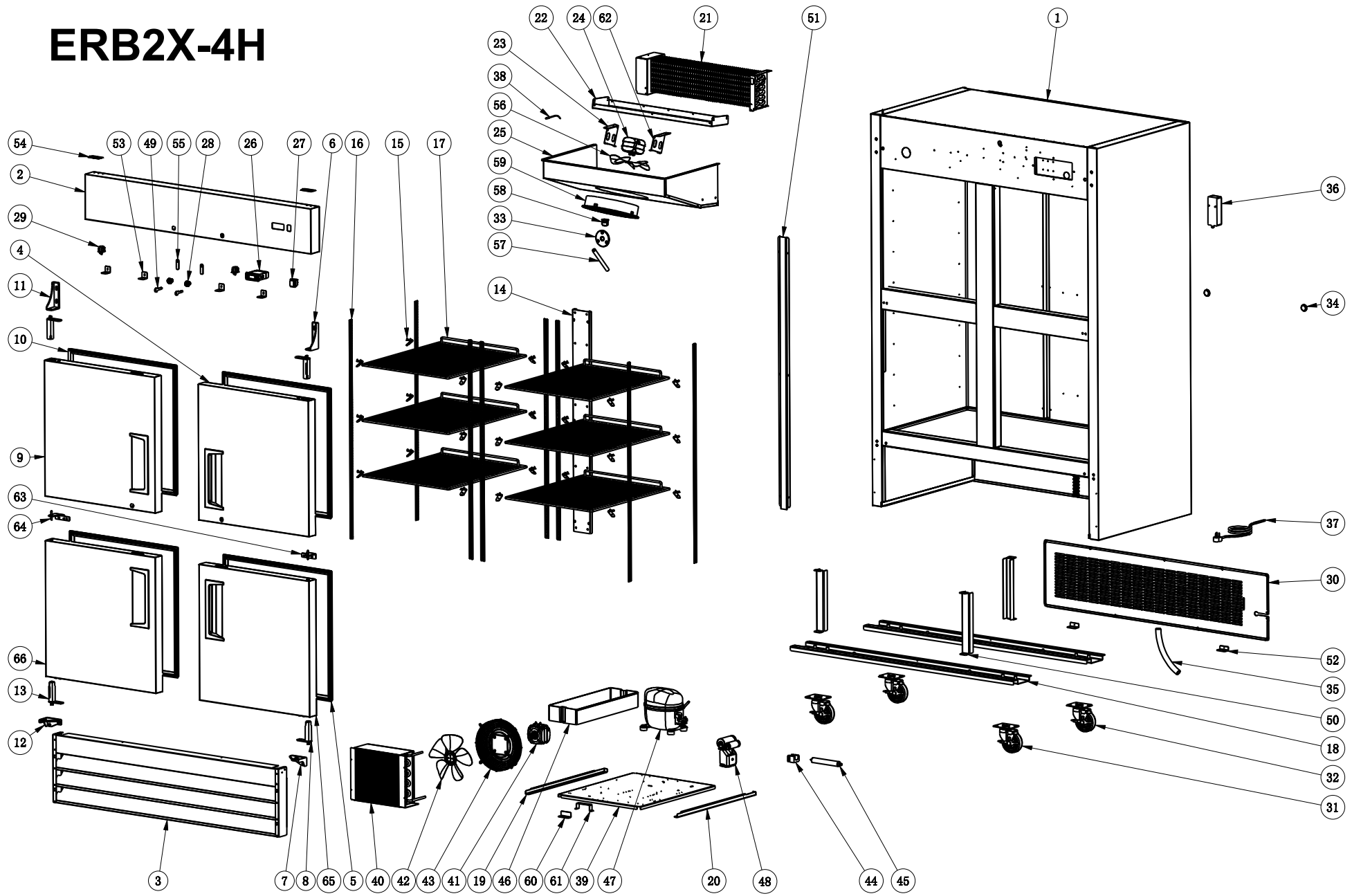
EFB1X-2H



PARTS LIST EFB1X-2H

No.	PART #	DESCRIPTION	QTY	No.	PART #	DESCRIPTION	QTY
1	NONSTOCKING	CABINET	1	34	XRI0054	POWER CORD, NEMA 5-15P (14 AWG, APPX 8" LONG)	1
2	X2199001373	LOWER FRONT SHROUD (1 GLASS DOOR)	1	35	NON STOCKING	COMPRESSOR UNIT INSTALLATION BOARD	1
3	X2199001374	LOWER FRONT SHROUD (1 DOOR)	1	36	XRI100263	CONDENSER (4R10K260L)	1
4	XX-URH005	HINGE, UPPER RIGHT	1	37	XRI000032	FAN MOTOR (YZ10-20/10/55) (Alternate for X17701000014) (BLADE #XRI0015 SOLD SEPARATELY)	1
5	XX-BRH005	HINGE, BOTTOM RIGHT	1	38	XRI050230	CONDENSER FAN COVER	1
6	XX-DC0328	HINGE CARTRIDGE, SELF CLOSING	2	39	XRI0015	BLADE OF FAN MOTOR	1
7	XRI0003	TOP/BOTTOM COVER FOR REVERSIBLE DOOR	1	40	XX-H00346	FILTER BRACKET	1
8	XRI0003	TOP/BOTTOM COVER FOR REVERSIBLE DOOR	1	41	XX-H00341	FILTER DRIER	1
9	XRIHD2251	DOOR, UPPER RIGHT	1	*	X330009	CAP TUBE (0.035" I.D.X 130" LONG)	1
10	XRIHD2252	DOOR, BOTTOM RIGHT	1	42	X16316130008	OUTER DRAIN PAN	1
11	XRI680632	DOOR GASKET (26.85" X 24.88")	2	43	XX-HC0018	COMPRESSOR C/W STARTING COMPONENTS (EMC3134U/115VAC/60HX/R290)	1
12	X5302000003	SHELF CLIP	12	44	XX-HC0018K	STARTING COMPONENTS FOR EMC3134U	1
13	XRI0005	K STRIP	4	45	XRI0036	TEMPERATURE SENSOR OF CABINET INSIDE	1
14	XRI590601	SHELF (23.23" X 23.62")	3	46	XRI490053	DEFROST SENSOR (REPLACES XRI0036 AS ON JUNE 2021, PARTS ARE INTERCHANGEABLE)	1
15	NONSTOCKING	LEG SUPPORTER	2	47	XRI220481	DRAIN PAN HEATER (30W, 19" X 4.75")	1
16	NONSTOCKING	LEFT TRACK FOR ASSEMBLING PANEL	1	48	XRI0210	DRAIN HOSE HEATER (19" - 115VAC/10W)	1
17	NON STOCKING	RIGHT TRACK FOR ASSEMBLING PANEL	1	49	XRI230126	DEFROST HEATER 250W (16.5" X 2")	1
18	XRI060370	EVAPORATOR (4R6K370L) USE FROM JUNE 2021	1	50	XX-H00340	LOCK & SET OF 2 KEYS	1
19	XRI180148	INNER DRAIN PAN	1	51	NONSTOCKING	BAFFLE OF SUCTION LINE	1
20	NONSTOCKING	LEFT EVAPORATOR FAN MOTOR BRACKET	1	52	NON STOCKING	BACK GRILL BRACKET	1
21	XRI000032	FAN MOTOR (YZ10-20/10/55) (Alternate for X17701000014) (BLADE #XRI0015 SOLD SEPARATELY)	1	53	NON STOCKING	CONTROL PANEL BRACKET	2
22	XGM120003	THERMOSTAT (IR33F0AHA0/115VAC)	1	54	XRI0084	HINGE, UPPER SHROUD	2
23	XRI0056	POWER SWITCH (RED)	1	55	SEE LOCK	LOCK BOLT	1
24	XRI0080-1	EVAPORATOR COVER (USE AFTER 01/2022)	1	56	XRI0015	BLADE OF FAN MOTOR	1
25	XRI0002-1	BACK GRILL (USE AFTER DATE 01-2022)	1	57	XRI0071	DRAIN HOSE	1
26	X-2194677	DOOR SWITCH	1	58	XRI0073	ELBOW PIPE	1
27	XX-H00340	LOCK & SET OF 2 KEYS	1	59	X16313130154	EVAPORATOR FAN MOTOR COVER	1
28	XX-SCB319	4" CASTER W/BRAKE	2	60	NON STOCKING	LIMITED BLOCK OF INSTALLATION BOARD	1
29	XX-SC0319	4" CASTER W/O BRAKE	2	61	X15740260003	VACUUM BREAKER	1
30	XX000430	DRAIN PLUG	1	62	NON STOCKING	COMPRESSOR UNIT HANDLE	1
31	X16352020002	FOAMING HOLE COVER	2	63	NON STOCKING	RIGHT EVAPORATOR FAN MOTOR BRACKET	1
32	XRI0024	DRAIN HOSE	1	64	XRI990215	DEFROST HEATER THERMAL FUSE (15A)	1
33	XRI0048-HC	LIGHT COMPONENTS	1	65	XRI800176	HINGE, MIDDLE RIGHT	1
				*	NOT SHOWN		

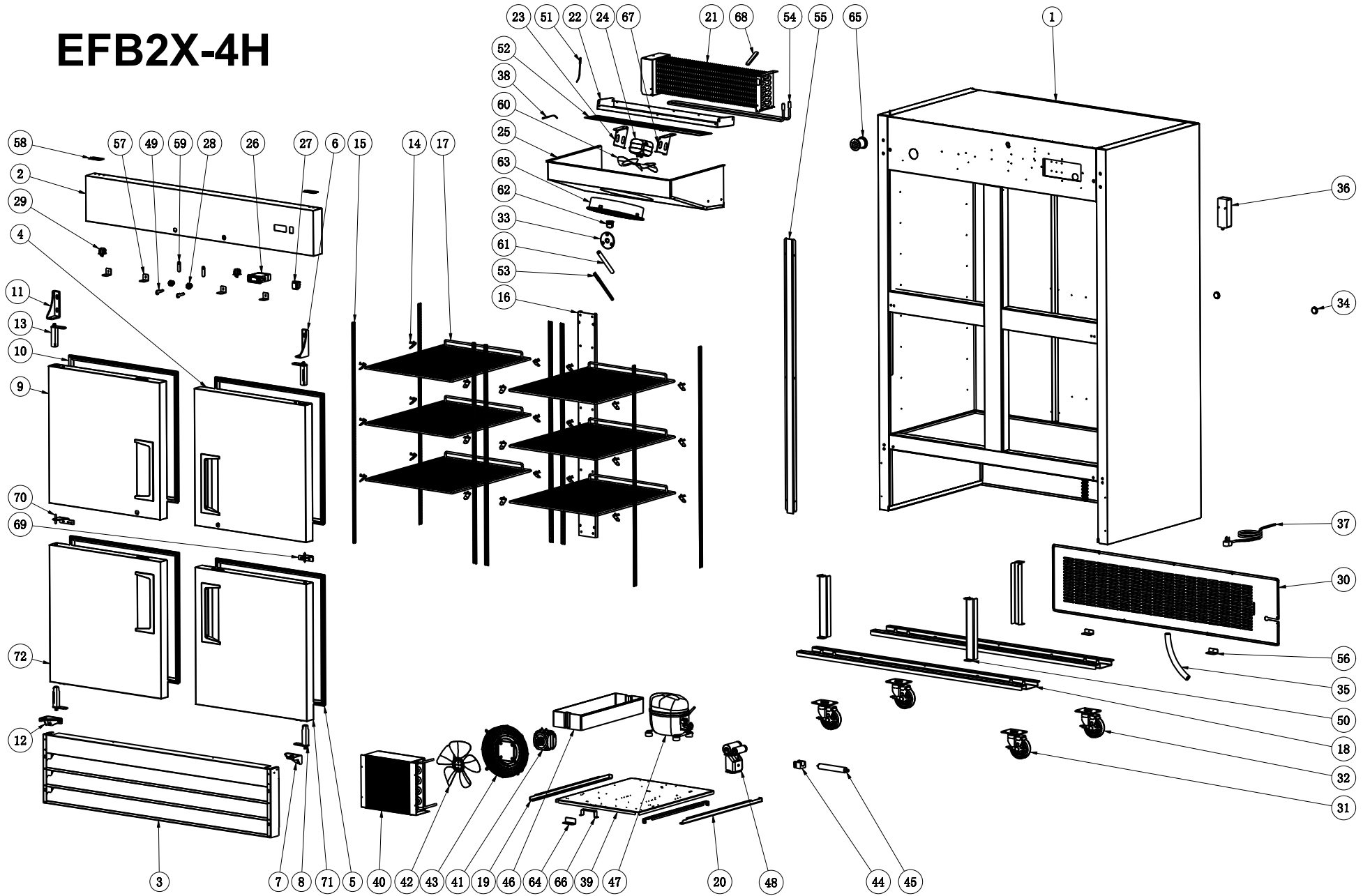
ERB2X-4H



PARTS LIST ERB2X-4H

No.	PART #	DESCRIPTION	QTY	No.	PART #	DESCRIPTION	QTY
1	NONSTOCKING	CABINET	1	35	XRI0024	DRAIN HOSE	1
2	X2199001394	UPPER FRONT SHROUD (2 HALF DOOR)	1	36	XRI0048-HC	LIGHT COMPONENTS	1
3	X2199001395	LOWER FRONT SHROUD (2 DOOR)	1	37	XRI0054	POWER CORD, NEMA 5-15P (14 AWG, APPX 8" LONG)	1
4	XRIHD2253	DOOR, UPPER RIGHT	1	38	XRI0036	TEMPERATURE SENSOR OF CABINET INSIDE	1
5	XRI680632	DOOR GASKET (26.85" X 24.88")	2	39	NON STOCKING	COMPRESSOR UNIT INSTALLATION BOARD	1
6	XX-URH005	HINGE, UPPER RIGHT	1	40	XRI100263	CONDENSER (4R10K260L)	1
7	XX-BRH005	HINGE, BOTTOM RIGHT	1	41	XRI000032	FAN MOTOR (YZ10-20/10/55) (Alternate for X17701000014) (BLADE #XRI0015 SOLD SEPARATELY)	1
8	XX-DC0328	HINGE CARTRIDGE, SELF CLOSING	2	42	XRI0015	BLADE OF FAN MOTOR	1
9	XRIHD2254	DOOR, UPPER LEFT	1	43	XRI050230	CONDENSER FAN COVER	1
10	XRI680632	DOOR GASKET (26.85" X 24.88")	2	44	XX-H00346	FILTER BRACKET	1
11	XX-ULH005	HINGE, UPPER LEFT	1	45	XX-H00341	FILTER DRIER	1
12	XX-BLH004	HINGE, LEFT BOTTOM	1	46	X16316130008	OUTER DRAIN PAN	1
13	XX-DC0328	HINGE CARTRIDGE, SELF CLOSING	2	*	X300012	CAP TUBE (0.047" I.D. X 118" LONG)	1
14	NON STOCKING	REAR SUPPORT CHANEL	1	47	XX-HC0009	COMPRESSOR C/W STARTING COMPONENTS (DLE6.5CN/115V/R290)	1
15	X5302000003	SHELF CLIP	24	48	XX-HC0009K	STARTING COMPONENTS FOR DLE6.5CN	1
16	XRI0005	K STRIP	8	49	XX-H00340	LOCK & SET OF 2 KEYS	2
17	XRI590601	SHELF (23.23" X 23.62")	6	50	NON STOCKING	CABINET SUPPORT CHANEL	3
18	NONSTOCKING	BASE CHANEL	2	51	NONSTOCKING	BAFFLE OF SUCTION LINE	1
19	NONSTOCKING	LEFT TRACK FOR ASSEMBLING PANEL	1	52	NON STOCKING	BACK GRILL BRACKET	2
20	NON STOCKING	RIGHT TRACK FOR ASSEMBLING PANEL	1	53	NON STOCKING	CONTROL PANEL BRACKET	4
21	XRI0735R	EVAPORATOR COIL (4R7K620L)	1	54	XRI0084	HINGE, UPPER SHROUD	2
22	XRI180149	INNER DRAIN PAN	1	55	SEE LOCK	LOCK BOLT	2
23	NONSTOCKING	LEFT EVAPORATOR FAN MOTOR BRACKET	1	56	XRI0015	BLADE OF FAN MOTOR	1
24	XRI000032	FAN MOTOR (YZ10-20/10/55) (Alternate for X17701000014) (BLADE #XRI0015 SOLD SEPARATELY)	1	57	XRI0071	DRAIN HOSE	1
25	XRI0081-1	EVAPORATOR COVER (USE AFTER 01/2022)	1	58	XRI0073	ELBOW PIPE	1
26	XGM180005	THERMOSTAT (PYGX1Z0501/115VAC)	1	59	X16313130154	EVAPORATOR FAN MOTOR COVER	1
27	XRI0056	POWER SWITCH (RED)	1	60	NON STOCKING	LIMITED BLOCK OF INSTALLATION BOARD	1
28	XX-H00340	LOCK & SET OF 2 KEYS	2	61	NON STOCKING	COMPRESSOR UNIT HANDLE	1
29	X-2194677	DOOR SWITCH	2	62	NON STOCKING	RIGHT EVAPORATOR FAN MOTOR BRACKET	1
30	XRI0006-1	BACK GRILL (2 DOOR, USE AFTER 01-2022)	1	63	XRI800176	HINGE, MIDDLE RIGHT	1
31	XX-SCB319	4" CASTER W/BRAKE	2	64	XRI800178	HINGE, MIDDLE LEFT	1
32	XX-SC0319	4" CASTER W/O BRAKE	2	65	XRIHD2255	DOOR, BOTTOM RIGHT	1
33	XX000430	DRAIN PLUG	1	66	XRIHD2256	DOOR, BOTTOM LEFT	1
34	X16352020002	FOAMING HOLE COVER	2	*	NOT SHOWN		

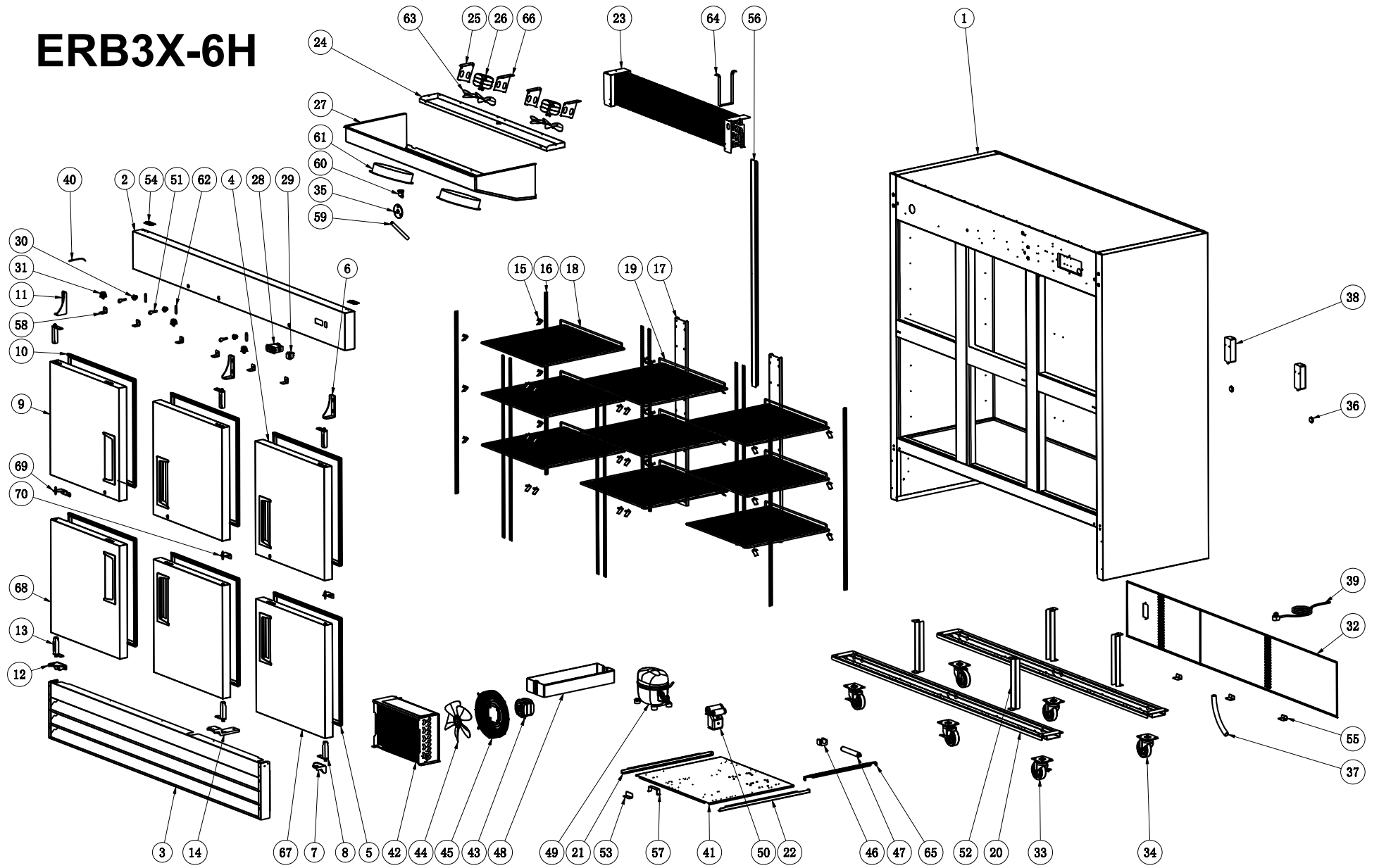
EFB2X-4H



PARTS LIST EFB2X-4H

No.	PART #	DESCRIPTION	QTY	No.	PART #	DESCRIPTION	QTY
1	NONSTOCKING	CABINET	1	38	XRI0036	TEMPERATURE SENSOR OF CABINET INSIDE	1
2	X2199001394	UPPER FRONT SHROUD (2 HALF DOOR)	1	39	NON STOCKING	COMPRESSOR UNIT INSTALLATION BOARD	1
3	X2199001395	LOWER FRONT SHROUD (2 DOOR)	1	40	XRI110350	CONDENSER (3R11K350L/D6)	1
4	XRIHD2253	DOOR, UPPER RIGHT	1	41	XRI001628	FAN MOTOR (YZ15-25/115V)	1
5	XRI680632	DOOR GASKET (26.85" X 24.88")	2	42	XRI0017	BLADE OF FAN MOTOR	1
6	XX-URH005	HINGE, UPPER RIGHT	1	43	XRI010004	CONDENSER FAN MOTOR GUARD/COVER	1
7	XX-BRH005	HINGE, BOTTOM RIGHT	1	44	XX-H00346	FILTER BRACKET	1
8	XX-DC0328	HINGE CARTRIDGE, SELF CLOSING	2	45	XX-H00341	FILTER DRIER	1
9	XRIHD2254	DOOR, UPPER LEFT	1	46	XRI0089	OUTER DRAIN PAN	1
10	XRI680632	DOOR GASKET (26.85" X 24.88")	2	*	X450012	CAP TUBE (0.047" I.D. X 177" LONG)	1
11	XX-ULH005	HINGE, UPPER LEFT	1	47	XX-HC0016	COMPRESSOR C/W STARTING COMPONENTS (SCE18ENLS*2/115VAC/R290)	1
12	XX-BLH004	HINGE, LEFT BOTTOM	1	48	XX-HC0016K	STARTING COMPONENTS FOR SCE18ENLS	1
13	XX-DC0328	HINGE CARTRIDGE, SELF CLOSING	2	49	XX-H00340	LOCK & SET OF 2 KEYS	2
14	X5302000003	SHELF CLIP	24	50	NON STOCKING	CABINET SUPPORT CHANEL	3
15	XRI0005	K STRIP	8	51	XRI490053	DEFROST SENSOR (REPLACES XRI0036 AS ON JUNE 2021, PARTS ARE INTERCHANGEABLE)	1
16	NON STOCKING	REAR SUPPORT CHANEL	1	52	XRI0049	DRAIN PAN HEATER 35W (27.5" X 4.75")	1
17	XRI590601	SHELF (23.23" X 23.62")	6	53	XRI0210	DRAIN HOSE HEATER (19" - 115VAC/10W)	1
18	NONSTOCKING	BASE CHANEL	2	54	XRI230127	DEFROST HEATER (REPLACES XRI2500 AS OF JUNE 2021, PARTS ARE INTERCHANGEABLE)	1
19	NONSTOCKING	LEFT TRACK FOR ASSEMBLING PANEL	1	55	NONSTOCKING	BAFFLE OF SUCTION LINE	1
20	NON STOCKING	RIGHT TRACK FOR ASSEMBLING PANEL	1	56	NON STOCKING	BACK GRILL BRACKET	2
21	XRI0735F	EVAPORATOR (4R7K620L)	1	57	NON STOCKING	CONTROL PANEL BRACKET	4
22	XRI180149	INNER DRAIN PAN	1	58	XRI0084	HINGE, UPPER SHROUD	2
23	NONSTOCKING	LEFT EVAPORATOR FAN MOTOR BRACKET	1	59	SEE LOCK	LOCK BOLT	2
24	XRI000032	FAN MOTOR (YZ10-20/10/55) (Alternate for X17701000014) (BLADE #XRI0015 SOLD SEPARATELY)	1	60	XRI0015	BLADE OF FAN MOTOR	1
25	XRI0081-1	EVAPORATOR COVER (USE AFTER 01/2022)	1	61	XRI0071	DRAIN HOSE	1
26	XGM120003	THERMOSTAT (IR33F0AHA0/115VAC)	1	62	XRI0073	ELBOW PIPE	1
27	XRI0056	POWER SWITCH (RED)	1	63	X16313130154	EVAPORATOR FAN MOTOR COVER	1
28	XX-H00340	LOCK & SET OF 2 KEYS	2	64	NON STOCKING	LIMITED BLOCK OF INSTALLATION BOARD	1
29	X-2194677	DOOR SWITCH	2	65	X15740260003	VACUUM BREAKER	1
30	XRI0006-1	BACK GRILL (2 DOOR, USE AFTER 01-2022)	1	66	NON STOCKING	COMPRESSOR UNIT HANDLE	1
31	XX-SCB319	4" CASTER W/BRAKE	2	67	NON STOCKING	RIGHT EVAPORATOR FAN MOTOR BRACKET	1
32	XX-SC0319	4" CASTER W/O BRAKE	2	68	XRI990215	DEFROST HEATER THERMAL FUSE (15A)	1
33	XX000430	DRAIN PLUG	1	69	XRI800176	HINGE, MIDDLE RIGHT	1
34	X16352020002	FOAMING HOLE COVER	2	70	XRI800178	HINGE, MIDDLE LEFT	1
35	XRI0024	DRAIN HOSE	1	71	XRIHD2255	DOOR, BOTTOM RIGHT	1
36	XRI0048-HC	LIGHT COMPONENTS	1	72	XRIHD2256	DOOR, BOTTOM LEFT	1
37	XRI0054	POWER CORD, NEMA 5-15P (14 AWG, APPX 8" LONG)	1	*	NOT SHOWN		

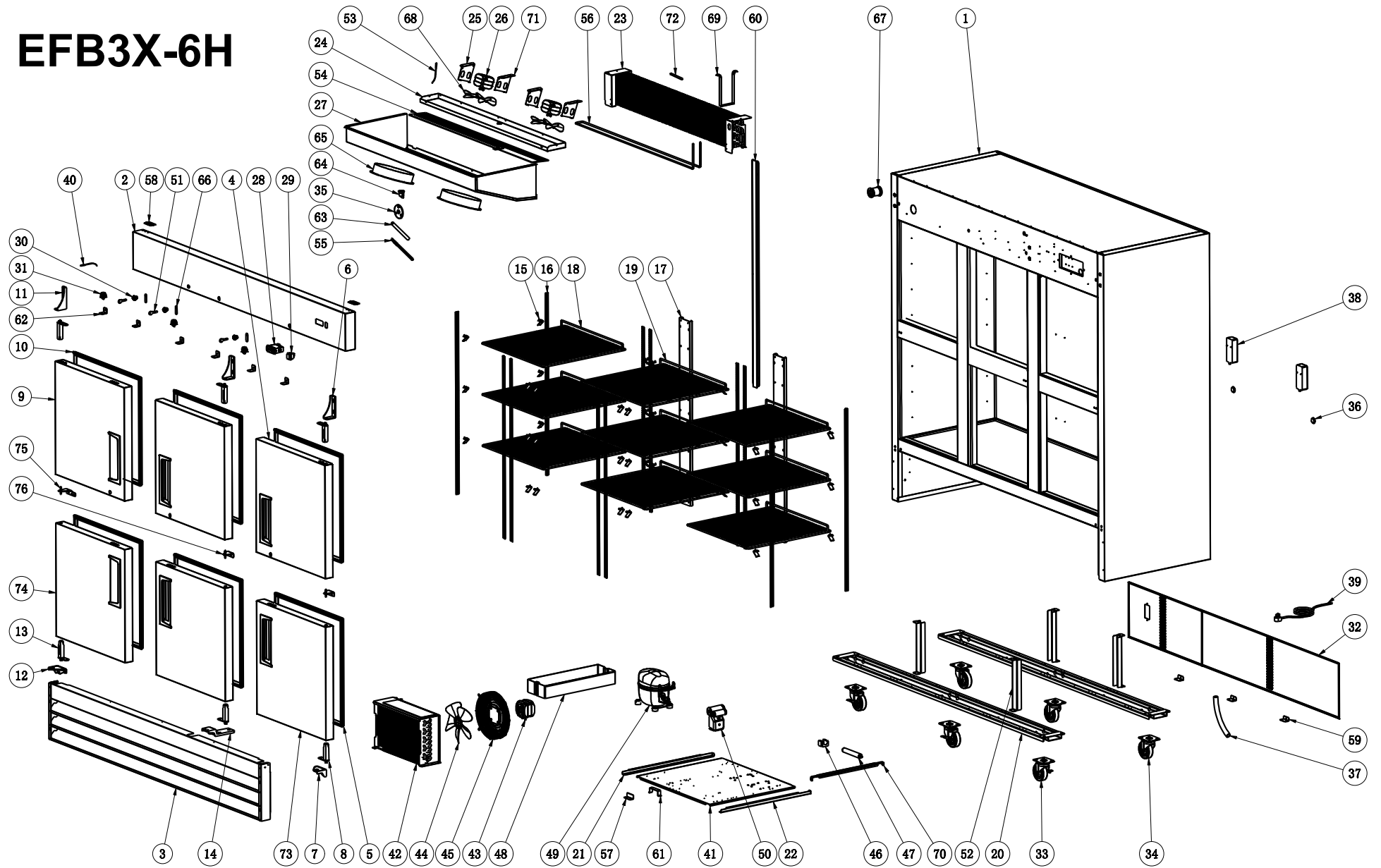
ERB3X-6H



PARTS LIST ERB3X-6H

No.	PART #	DESCRIPTION	QTY	No.	PART #	DESCRIPTION	QTY
1	NONSTOCKING	CABINET	1	37	XRI0024	DRAIN HOSE	1
2	X2199001412	UPPER FRONT SHROUD (3 SEC HALF DOOR)	1	38	XRI0048-HC	LIGHT COMPONENTS	2
3	X2199001413	LOWER FRONT SHROUD (3 DOOR)	1	39	XRI0054	POWER CORD, NEMA 5-15P (14 AWG, APPX 8" LONG)	1
4	XRIHD2253	DOOR, UPPER RIGHT	2	40	XRI0036	TEMPERATURE SENSOR OF CABINET INSIDE	1
5	XRI680632	DOOR GASKET (26.85" X 24.88")	4	41	NON STOCKING	COMPRESSOR UNIT INSTALLATION BOARD	1
6	XX-URH005	HINGE, UPPER RIGHT	2	42	XRI100263	CONDENSER (4R10K260L)	1
7	XX-BRH005	HINGE, BOTTOM RIGHT	2	43	XRI000032	FAN MOTOR (YZ10-20/10/55) (Alternate for X17701000014) (BLADE #XRI0015 SOLD SEPARATELY)	1
8	XX-DC0328	HINGE CARTRIDGE, SELF CLOSING	4	44	XRI0015	BLADE OF FAN MOTOR	1
9	XRIHD2254	DOOR, UPPER LEFT	1	45	XRI050230	CONDENSER FAN COVER	1
10	XRI680632	DOOR GASKET (26.85" X 24.88")	2	46	XX-H00346	FILTER BRACKET	1
11	XX-ULH005	HINGE, UPPER LEFT	1	47	XX-H00341	FILTER DRIER	1
12	XX-BLH004	HINGE, LEFT BOTTOM	1	48	XRI0089	OUTER DRAIN PAN	1
13	XX-DC0328	HINGE CARTRIDGE, SELF CLOSING	2	*	X240014	CAP TUBE (0.055" X 94.5" LONG)	1
14	XX-BMH002	HINGE, MIDDLE BOTTOM	1	49	XX-HC0027	COMPRESSOR C/W STARTING COMPONENTS (EMC3140U/115V/R290)	1
15	X5302000003	SHELF CLIP	36	49	XX-HC0027K	STARTING COMPONENTS FOR EMC3140U	1
16	XRI0005	K STRIP	12	51	XX-H00340	LOCK & SET OF 2 KEYS	3
17	NON STOCKING	REAR SUPPORT CHANEL	2	52	NON STOCKING	CABINET SUPPORT CHANEL	4
18	XRI590601	SHELF (23.23" X 23.62")	6	53	NON STOCKING	LIMITED BLOCK OF INSTALLATION BOARD	1
19	XRI0050	SHELF, MIDDLE (25.1" X 22.2")	3	54	XRI0084	HINGE, UPPER SHROUD	2
20	NONSTOCKING	BASE CHANEL	2	55	NON STOCKING	BACK GRILL BRACKET	3
21	NONSTOCKING	LEFT TRACK FOR ASSEMBLING PANEL	1	56	NONSTOCKING	BAFFLE OF SUCTION LINE	1
22	NON STOCKING	RIGHT TRACK FOR ASSEMBLING PANEL	1	57	NON STOCKING	COMPRESSOR UNIT HANDLE	1
23	XRI071100	EVAPORATOR (4R7K1100L)	1	58	NON STOCKING	CONTROL PANEL BRACKET	6
24	XRI702001	INNER DRAIN PAN	1	59	XRI0071	DRAIN HOSE	1
25	NONSTOCKING	LEFT EVAPORATOR FAN MOTOR BRACKET	2	60	XRI0073	ELBOW PIPE	1
26	XRI000032	FAN MOTOR (YZ10-20/10/55) (Alternate for X17701000014) (BLADE #XRI0015 SOLD SEPARATELY)	2	61	X16313130154	EVAPORATOR FAN MOTOR COVER	2
27	XRI0082-1	EVAPORATOR COVER (USE AFTER 01/2022)	1	62	SEE LOCK	LOCK BOLT	3
28	XGM180005	THERMOSTAT (PYGX120501/115VAC)	1	63	XRI0015	BLADE OF FAN MOTOR	2
29	XRI0056	POWER SWITCH (RED)	1	64	NON STOCKING	DEFROST HEATER BRACKET	1
30	XX-H00340	LOCK & SET OF 2 KEYS	3	65	NON STOCKING	AUXILIARY TRACK	1
31	X-2194677	DOOR SWITCH	3	66	NON STOCKING	RIGHT EVAPORATOR FAN MOTOR BRACKET	2
32	XRI0064	BACK GRILL (3 DOOR)	1	67	XRIHD2255	DOOR, BOTTOM RIGHT	2
33	XX-SCB319	4" CASTER W/BRAKE	3	68	XRIHD2256	DOOR, BOTTOM LEFT	1
34	XX-SC0319	4" CASTER W/O BRAKE	3	69	XRI800178	HINGE, MIDDLE LEFT	1
35	XX000430	DRAIN PLUG	1	70	XRI800176	HINGE, MIDDLE RIGHT	2
36	X16352020002	FOAMING HOLE COVER	2	*	NOT SHOWN		

EFB3X-6H



PARTS LIST EFB3X-6H

No.	PART #	DESCRIPTION	QTY	No.	PART #	DESCRIPTION	QTY
1	NONSTOCKING	CABINET	1	40	XRI0036	TEMPERATURE SENSOR OF CABINET INSIDE	1
2	X2199001412	UPPER FRONT SHROUD (3 SEC HALF DOOR)	1	41	NON STOCKING	COMPRESSOR UNIT INSTALLATION BOARD	1
3	X2199001413	LOWER FRONT SHROUD (3 DOOR)	1	42	XRI110350	CONDENSER (3R11K350L/D6)	1
4	XRIHD2253	DOOR, UPPER RIGHT	2	43	XRI001628	FAN MOTOR (YZ15-25/115V)	1
5	XRI680632	DOOR GASKET (26.85" X 24.88")	4	44	XRI0017	BLADE OF FAN MOTOR	1
6	XX-URH005	HINGE, UPPER RIGHT	2	45	XRI010004	CONDENSER FAN MOTOR GUARD/COVER	1
7	XX-BRH005	HINGE, BOTTOM RIGHT	1	46	XX-H00346	FILTER BRACKET	1
8	XX-DC0328	HINGE CARTRIDGE, SELF CLOSING	4	47	XX-H00341	FILTER DRIER	1
9	XRIHD2254	DOOR, UPPER LEFT	1	48	XRI0089	OUTER DRAIN PAN	1
10	XRI680632	DOOR GASKET (26.85" X 24.88")	2	*	X340014	CAP TUBE (0.055" I.D. X 134" LONG)	1
11	XX-ULH005	HINGE, UPPER LEFT	1	49	X17202100068	COMPRESSOR C/W STARTING COMPONENTS (SCE21CNLX/115V/R290)	1
12	XX-BLH004	HINGE, LEFT BOTTOM	1	50	XX-STARTKITHC6	START KIT FOR COMPRESSOR SCE21CNLX	1
13	XX-DC0328	HINGE CARTRIDGE, SELF CLOSING	2	51	XX-H00340	LOCK & SET OF 2 KEYS	3
14	XX-BMH002	HINGE, MIDDLE BOTTOM	1	52	NON STOCKING	CABINET SUPPORT CHANEL	4
15	X5302000003	SHELF CLIP	36	53	XRI490053	DEFROST SENSOR (REPLACES XRI0036 AS ON JUNE 2021, PARTS ARE INTERCHANGEABLE)	1
16	XRI0005	K STRIP	12	54	XRI221151	DRAIN PAN HEATER (45.25" x 3.75", 55W-115VAC)	1
17	NON STOCKING	REAR SUPPORT CHANEL	2	55	XRI0210	DRAIN HOSE HEATER (19" - 115VAC/10W)	1
18	XRI590601	SHELF (23.23" X 23.62")	6	56	XRI230134	DEFROST HEATER 650W (46.45" X 2")	1
19	XRI0050	SHELF, MIDDLE (25.1" X 22.2")	3	57	NON STOCKING	LIMITED BLOCK OF INSTALLATION BOARD	1
20	NONSTOCKING	BASE CHANEL	2	58	XRI0084	HINGE, UPPER SHROUD	2
21	NONSTOCKING	LEFT TRACK FOR ASSEMBLING PANEL	1	59	NON STOCKING	BACK GRILL BRACKET	3
22	NON STOCKING	RIGHT TRACK FOR ASSEMBLING PANEL	1	60	NONSTOCKING	BAFFLE OF SUCTION LINE	1
23	XRI071100	EVAPORATOR (4R7K1100L)	1	61	NON STOCKING	COMPRESSOR UNIT HANDLE	1
24	XRI702001	INNER DRAIN PAN	1	62	NON STOCKING	CONTROL PANEL BRACKET	6
25	NONSTOCKING	LEFT EVAPORATOR FAN MOTOR BRACKET	2	63	XRI0071	DRAIN HOSE	1
26	XRI000032	FAN MOTOR (YZ10-20/10/55) (Alternate for X17701000014) (BLADE #XRI0015 SOLD SEPARATELY)	2	64	XRI0073	ELBOW PIPE	1
27	XRI0082-1	EVAPORATOR COVER (USE AFTER 01/2022)	1	65	X16313130154	EVAPORATOR FAN MOTOR COVER	2
28	XGM120003	THERMOSTAT	1	66	SEE LOCK	LOCK BOLT	3
29	XRI0056	POWER SWITCH (RED)	1	67	X15740260003	VACUUM BREAKER	1
30	XX-H00340	LOCK & SET OF 2 KEYS	3	68	XRI0015	BLADE OF FAN MOTOR	2
31	X-2194677	DOOR SWITCH	3	69	NON STOCKING	DEFROST HEATER BRACKET	1
32	XRI0064	BACK GRILL (3 DOOR)	1	70	NON STOCKING	AUXILIARY TRACK	1
33	XX-SCB319	4" CASTER W/BRAKE	3	71	NON STOCKING	RIGHT EVAPORATOR FAN MOTOR BRACKET	2
34	XX-SC0319	4" CASTER W/O BRAKE	3	72	XRI990215	DEFROST HEATER THERMAL FUSE (15A)	1
35	XX000430	DRAIN PLUG	1	73	XRIHD2255	DOOR, BOTTOM RIGHT	2
36	X16352020002	FOAMING HOLE COVER	2	74	XRIHD2256	DOOR, BOTTOM LEFT	1
37	XRI0024	DRAIN HOSE	1	75	XRI800178	HINGE, MIDDLE LEFT	1
38	XRI0048-HC	LIGHT COMPONENTS	2	76	XRI800176	HINGE, MIDDLE RIGHT	2
39	XRI0051	POWER CORD (NEMA 5-20P, 12AWG, APPX 8' LONG)	1	*	NOT SHOWN		



**Entrée Half Door Reach-In Models:
ERB1X-2H ERB2X-4H ERB3X-6H
EFB1X-2H EFB2X-4H EFB3X-6H**



PHONE: 704-900-2068
Website: www.entree.biz

REV. 20241119