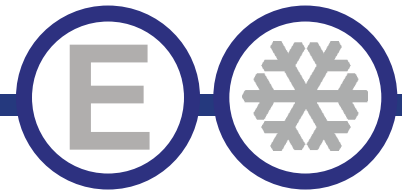




# Series "B"



## Megatop Prep Unit With Drawers

Model	Size
EMST27E-2DX	27½" Unit



EMST27E-2DX

### STANDARD FEATURES

- Stainless steel exterior and interior and back, matching aluminum finish in rear.
- Rounded corner design inside of the cabinet makes it easy to clean.
- Magnetic drawer gaskets removable with tools for easy cleaning
- R290 Refrigeration System hold 33°F to 41°F for the best food preservation.
- Drawers with heavy duty guides and rollers.
- Electronic control system makes it easy to adjust temperature set point and defrost frequency. Error code to diagnose service issues.
- Pre-installed 4" swivel casters with brakes.
- Easy to access condenser coil for cleaning and service.
- Insulated lid on prep unit helps maintain food freshness.
- **WARRANTY:** Two (2) Years parts & labor, Compressor Five (5) years. Drawers one (1) year

\*Not suitable for installation in a non-commercial or residential applications.

Items	Description	Items	Description
Front, top & sides	Stainless steel	Temperature control	Solid state thermostat/Digital display
Doors	Stainless steel	Approvals	ETL LISTED
External back	Aluminum	Refrigerating system	Capillary tube
Cabinet interior	Stainless steel	Refrigerant	R290
Interior floor	Stainless steel	Temperature range	33°F to 41°F
Insulation	Polyurethane (CFC free)	Evaporator	Powder coated aluminum/copper
Shelves	Heavy duty, PVC coating	Condensing unit	Bottom mounted

CONFORMS TO NSF/ANSI STD 7

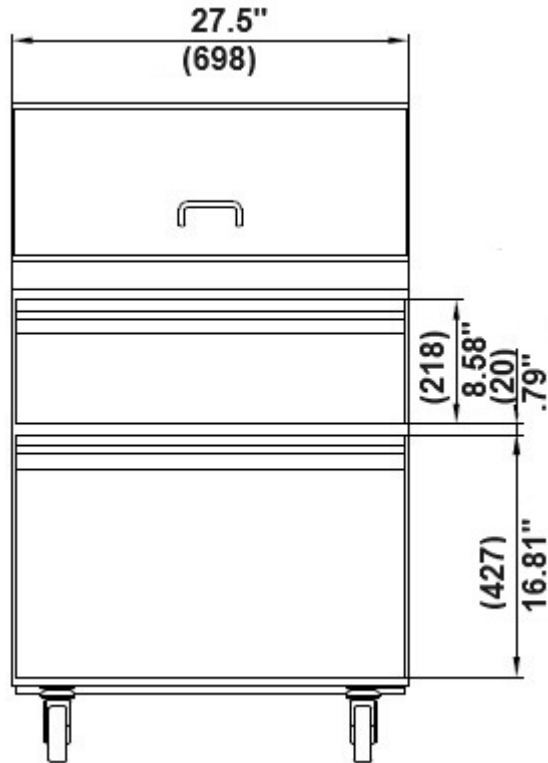
REFRIGERATION



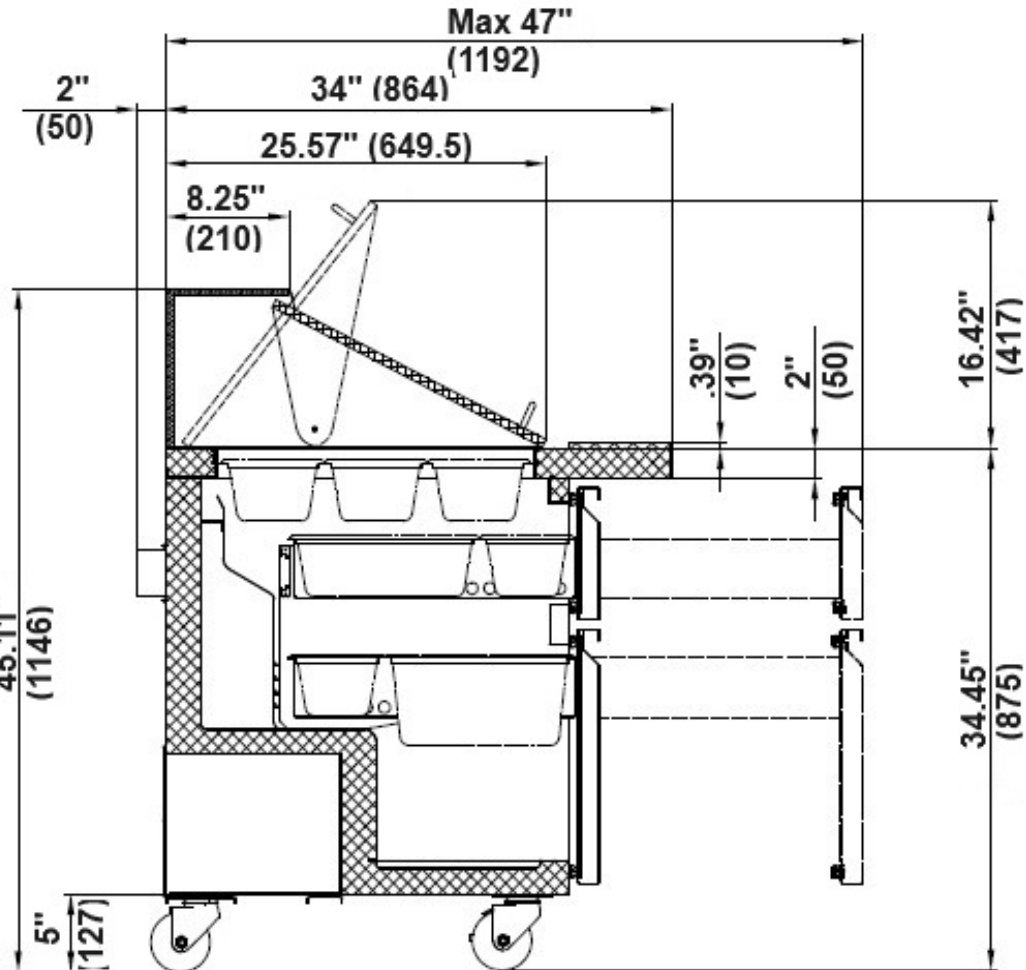


# DETAILS AND DIMENSIONS

EMST27E-2DX

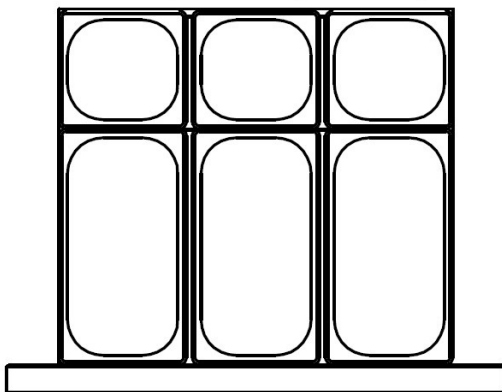


TOP DRAWER

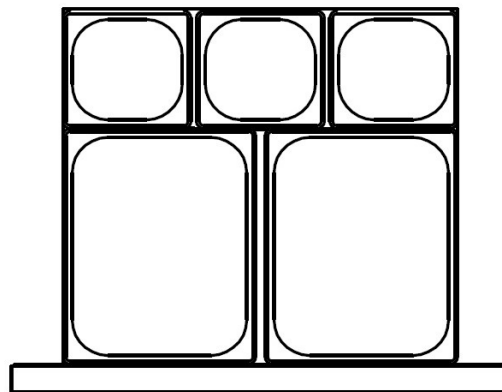


BOTTOM DRAWER

1/3 GN Pan (100mm) 3 pcs  
1/6 GN Pan (100mm) 3 pcs



1/2 GN Pan (100mm) 2 pcs  
1/6 GN Pan (100mm) 3 pcs



Model	Drawers	Pans	Cabinet Dim (inches)			HP	Voltage	Amps	NEMA Plug	Cord Length	Shipping Weight
			L	D	H						
EMST27E-2DX	2	11	27.5	34	45.11	1/5	115/60/1	4.5	5-15P	10	265 lbs