



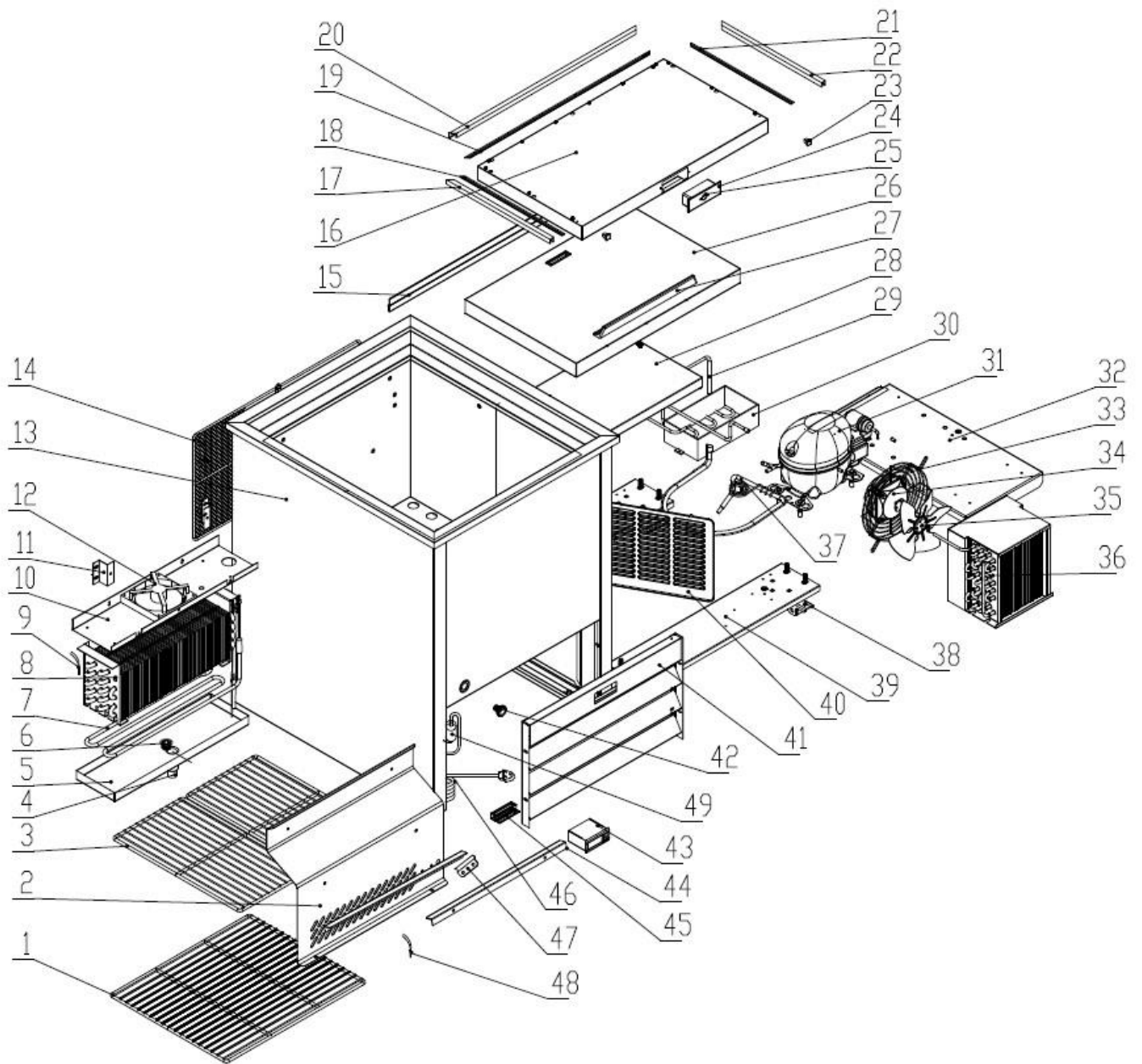
GLASS FROSTER

MODELS: EGF24-HC & EGF36-HC



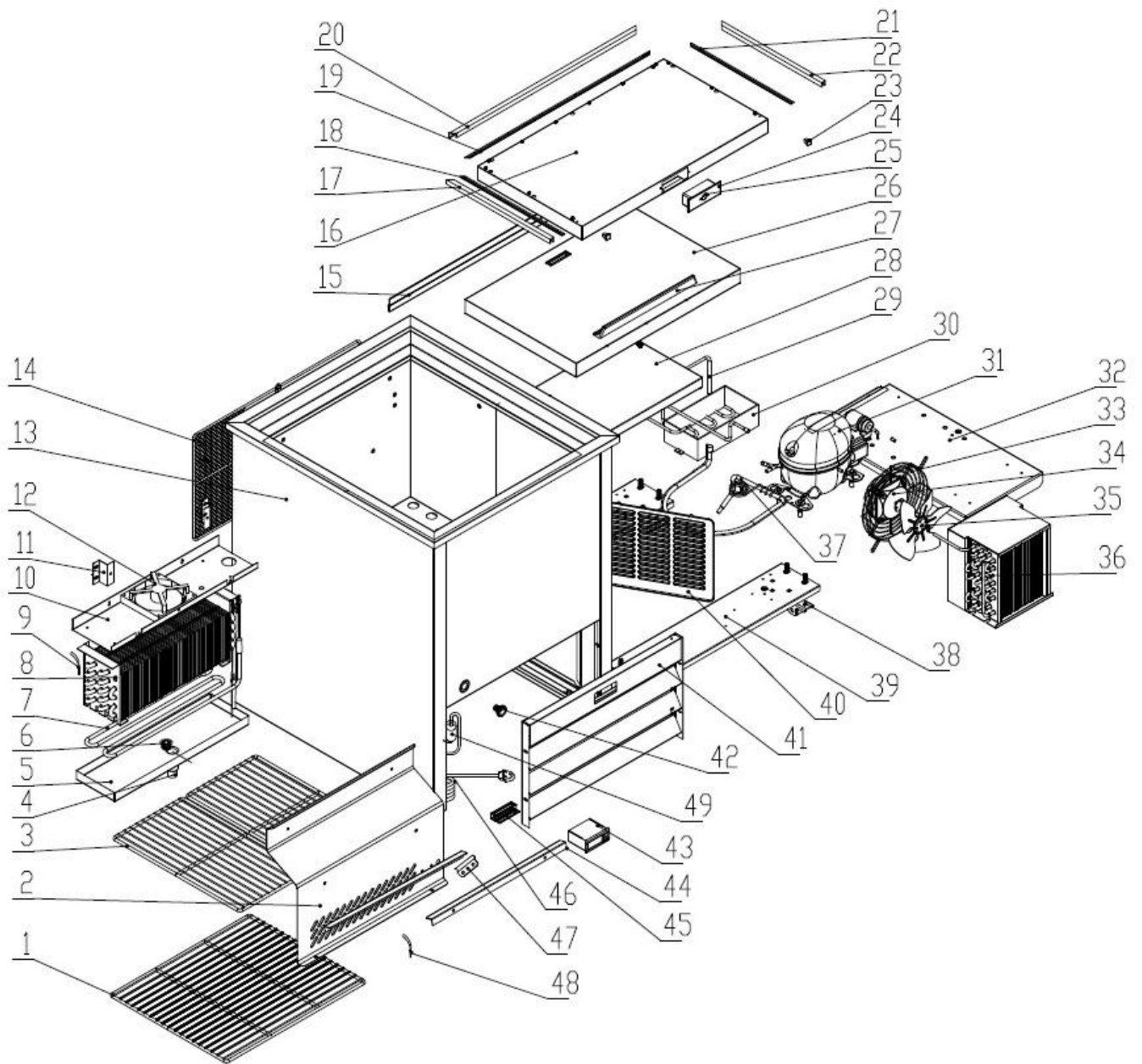
Phone 704-200-2068

www.entree.biz



MODEL EGF24-HC

NO.	PART #	DESCRIPTION	QTY
1	GF0017	BOTTOM SHELF	1
2	GF0019	EVAPORATOR COVER	1
3	GF0003	SHELF	2
4	G30002	DRAIN PIPE (B)	1
5	GF0018	EVAPORATOR WATER PAN	1
6	G30001	DRAIN PIPE (A)	1
7	HC1200	HEATING ELEMENT	1
8	GF0013	EVAPORATOR	1
9	H00207	THERMAL FUSE FOR DEFROST ELEMENT	1
10	N/A	FAN SUPPORT	1
11	N/A	EVAPORATOR COVER SUPPORT	2
12	HC0117	EVAPORATOR FAN	1
13	N/A	BODY	1
14	GF0006	REAR GRILLS (24)	1
15	GF0024	DOOR SEAL PART	1
16	N/A	FORMED TOP	1
17	N/A	DECORATIVE BAR ON THE LEFT/A	1
18	N/A	DECORATIVE BAR ON THE LEFT/B	1
19	N/A	BACK DECORATIVE BAR /B	1
20	N/A	BACK DECORATIVE BAR /A	1
21	N/A	DECORATIVE BAR ON THE RIGHT/B	1
22	N/A	DECORATIVE BAR ON THE RIGHT/A	1
23	N/A	DECORATIVE BAR CLIP	2
24	GF0002	LOCK BOX	1
25	BC30704	LOCK W/SET OF 2 KEYS	1
	BC30704-2	SET OF 2 KEYS	*
26	GF0011	DOOR	1
27	BC30908	HANDLE	1
28	N/A	FORMED PART	1
29	GF0009	DISCHARGE PIPE	1
30	GF0010	WATER BOX	1
31	HC0001F	COMPRESSOR (EM2X3117U) W/FILTER DRIER	1
31	HC0001K	START KIT FOR EM2X3117U	
32	N/A	UNIT BOARD	1
33	H00113-1	FAN GUARD, CONDENSER	1
34	HC0112	CONDENSER FAN	1
35	HC0117-1	FAN BLADE	1
36	HC0347	CONDENSER	1
37	GF0008	SUCTION PIPE	1
38	BC1316	1" ROLLER	4
39	N/A	WHEEL SUPPORT	2
40	N/A	AIR FLOW WINDOW	1
41	GF0015	FRONT PANLE	1
42	GF0001	WATER PIPE NUT	1
43	H00204	THERMOSTAT	1
44	N/A	SUPPORT	2
45	H104070144	LED POWER SUPPLY	1
46	BC30900	PLUG	1
47	N/A	SENSOR FIXED CLIP	1
48	H00205-3M	SENSOR (Alternate H00206)	2
49	RD0341	FILTER DRIER	1



MODEL EGF36-HC

NO.	PART #	DESCRIPTION	QTY
1	GF0005	BOTTOM SHELF	2
2	GF1020	EVAPORATOR COVER	1
3	GF0004	SHELF	2
4	G30002	DRAIN PIPE (B)	1
5	H01141	EVAPORATOR WATER PAN	1
6	G30001	DRAIN PIPE (A)	1
7	HC1201	HEATING ELEMENT	1
8	GF0014	EVAPORATOR	1
9	H00207	THERMAL FUSE FOR DEFROST ELEMENT	1
10	N/A	FAN SUPPORT	1
11	N/A	EVAPORATOR COVER SUPPORT	2
12	HC0117	EVAPORATOR FAN	1
13	N/A	BODY	1
14	GF0007	REAR GRILLS (36)	1
15	GF0036	DOOR SEAL PART	1
16	N/A	FORMED TOP	1
17	N/A	DECORATIVE BAR ON THE LEFT/A	1
18	N/A	DECORATIVE BAR ON THE LEFT/B	1
19	N/A	BACK DECORATIVE BAR /B	1
20	N/A	BACK DECORATIVE BAR /A	1
21	N/A	DECORATIVE BAR ON THE RIGHT/B	1
22	N/A	DECORATIVE BAR ON THE RIGHT/A	1
23	N/A	DECORATIVE BAR CLIP	2
24	GF0002	LOCK BOX	1
25	BC30704	LOCK W/SET OF 2 KEYS	1
	BC30704-2	SET OF 2 KEYS	*
26	GF0012	DOOR	1
27	BC30908	HANDLE	1
28	N/A	FORMED PART	1
29	GF0009	DISCHARGE PIPE	1
30	GF0010	WATER BOX	1
31	HC0001F	COMPRESSOR (EM2X3117U) W/FILTER DRIER	1
31	HC0001K	START KIT FOR EM2X3117U	*
32	N/A	UNIT BOARD	1
33	H00113-1	FAN GUARD, CONDENSER	1
34	HC0112	CONDENSER FAN	1
35	HC0117-1	FAN BLADE	1
36	HC0347	CONDENSER	1
37	GF0008	SUCTION PIPE	1
38	BC1316	1" ROLLER	4
39	N/A	WHEEL SUPPORT	2
40	N/A	AIR FLOW WINDOW	1
41	GF0016	FRONT PANLE	1
42	GF0001	WATER PIPE NUT	1
43	H00204	THERMOSTAT	1
44	N/A	SUPPORT	2
45	H104070144	LED POWER SUPPLY	1
46	BC30900	PLUG	1
47	N/A	SENSOR FIXED CLIP	1
48	H00205-3M	SENSOR (ALTERNATE H00206)	2
49	RD0341	FILTER DRIER	1



GLASS FROSTER

MODELS: EGF24-HC & EGF36-HC



Phone 704-200-2068

www.entree.biz

