



**PARTS LIST  
FOR THREE DOOR  
DOOR REACH-IN DUAL VOLTAGE  
MODELS**



**CF3-DV**

Model Number Breakdown: CF3-DV

C = Entrée

F = Freezer

3 = Number of doors on the unit

DV = DUAL VOLTAGE

Serial Number Date Code:

Example: 1509ENTH00123

The first two numbers are the Year, 15 = 2015

The second two number are the Month, 09 = September

ENTH = Entrée

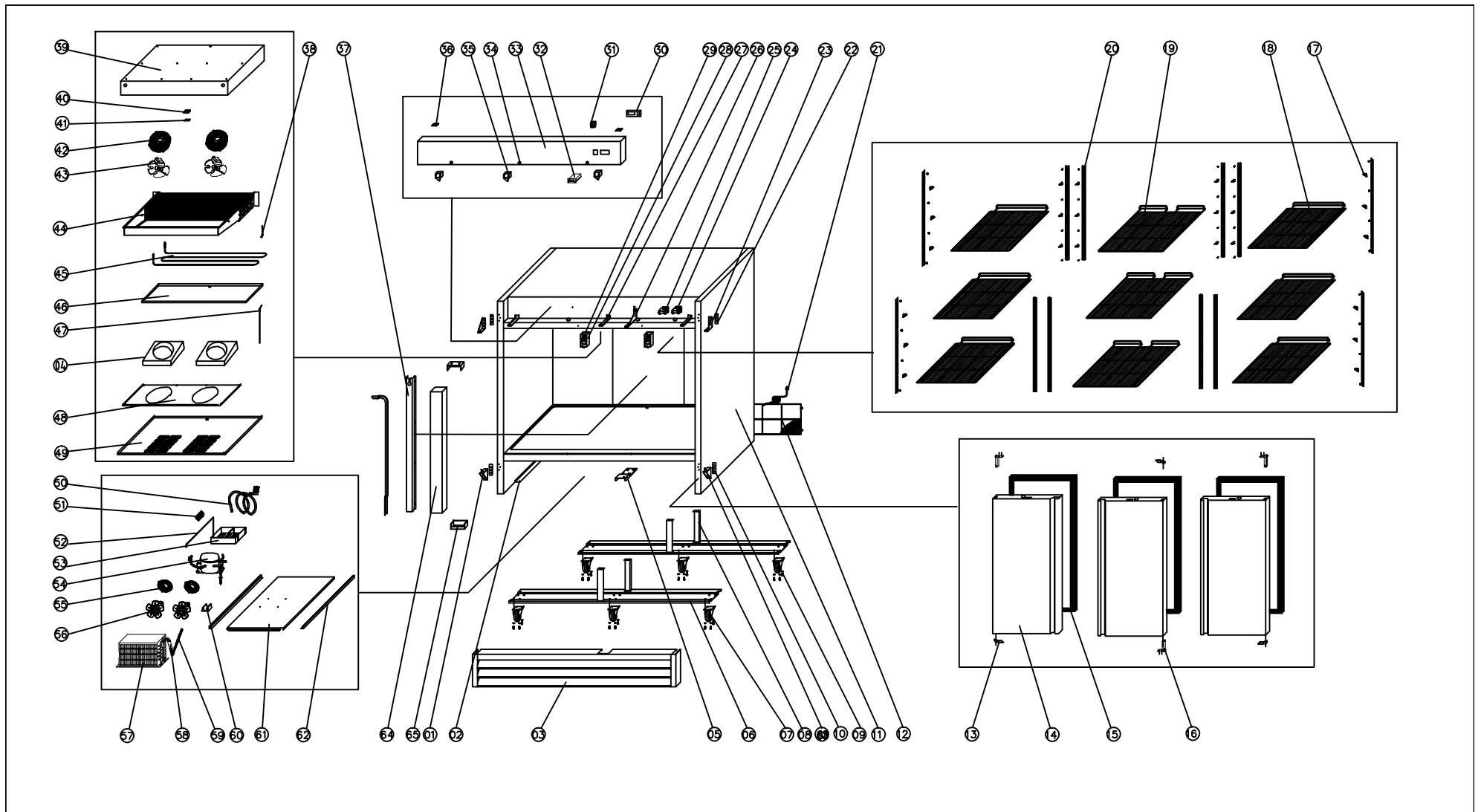
The last FIVE numbers are the numerical sequence of units built that month. In the example this unit would have been the one hundred twenty third unit.

To order parts that are non-warranty, you can contact our parts distributor, Whaley Parts and Supply @ 855-394-8933.

Or, go to their website: [www.whaleyfoodservice .com](http://www.whaleyfoodservice.com)

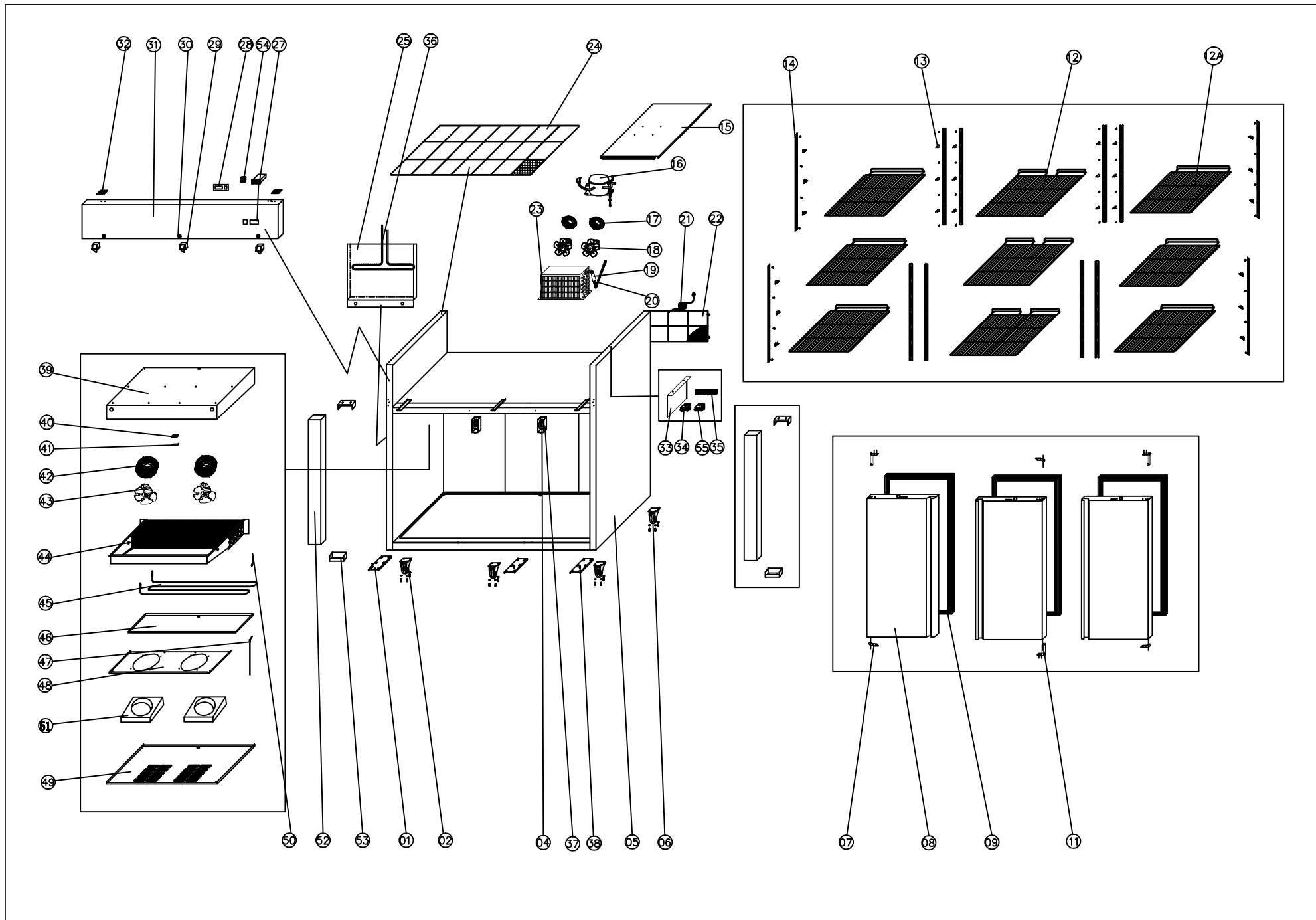
On Whaley's website you can key in the part number, it will tell you the current list price and how many are available.

If you have any questions, you can contact the Entrée Service Department at 570-752-4602, or email: [john@entree.biz](mailto:john@entree.biz)



NO.	Part #	DESCRIPTION	QTY
1	C20018A	DOOR HINGE /DOWN	1
2	N/A		
3	C20027	BOTTOM SHROUD 3DR BAL	1
4	N/A		
5	C20022A	BOTTOM MIDDLE HINGE	1
6	N/A		
7	H00316	CASTER, 4" DIAMETER W/ BRAKE	3
8	N/A		
9	H00317	CASTER, 4" DIAMETER W/O BRAKE	3
10	H00329	WASHER OF DOWN HINGE	2
11	N/A		
12	H00315	COVER, LOWER, REAR COMPARTMENT (3DR BAL)	1
13	H00326	HINGE AXIS JACKET, BOTTOM	3
14	H00324-3	DOOR	3
15	H00325-3	GASKET	3
16	H00328	HINGE CARTRIDGE, SELF CLOSING	3
17	C3234860	PILASTER CLIP	24
17.1	H00312	THUMBSCREW	48
18	H00308	SHELF /LEFTL/RIGHT	6
19	H00310	SHELF/MIDDLE	3
20	H00342	PILASTER	8
21	C2194682	POWER CORD, 12AWG/L14-20R	1
22	H00329-1	WASHER OF UP HINGE	2
23	H00331	DOOR HINGE /UP	1PAIR
24	H00220	CONTACTOR FOR COMPRESSOR	1
25	H00220-2	CONTACTOR FOR SWITCH	1
26	C20020	UPPER MIDDLE HINGE	1
27	N/A	FIXED CLIP OF FRONT PANLE	1
28	H00209	LAMP COVER	2
28	H00205	SENSING PROBE (BOX AND EVAP)	2
29	C2194687	LIGHT BULB, E12, LDE 3W (CF3-DV)	2
30	N/A		
31	C2194691	MAIN SWITCH	1
32	H00204	THERMOSTAT	1
	H00205	NTC TEMPERATURE PROBE (NOT SHOWN)	2

NO.	Part #	DESCRIPTION	QTY
33	C20016	UPPER SHROUD ASSY, 3 DR BAL	1
34	H00340	LOCK	3
34.1	H00357	KEY LOCK	*
35	C2194677	DOOR SWITCH	3
36	H00321	UPPER SHROUD HINGE	2
37	N/A		
38	H00207	PROTECTOR FOR HEATING ELEMENT	1
39	N/A		
40	N/A		
41	H00335	SENSOR FIXED CLIP	1
42	H00112	EVAPORATOR FAN GUARD	2
43	H00115	MOTOR, EVAPORATOR FAN (240V, 1330 RPM, 7.5 W)	2
44	H00358	EVAPORATOR COIL	1
45	H00200	DEFROST HEATING ELEMENT	1
46	C30011	EVAPORATOR WATER PAN	1
47	H00211	DRAIN PIPE HEATER	1
48	N/A		
49	N/A		
50	HDV001B	HELIX SUCTION PIPE+CAPILLARY B	1
51	H00216	TERMINAL BLOCK	1
52	N/A		
53	C30003	CONDENSER DRAIN BOX, BOTTOM MOUNT	1
54	H00027F	COMPRESSOR KIT, NJ2192JK 220VAC + FILTER DRYER	1
55	H00113	BASKET GUARD GRILLS	2
56	H00110	CONDENSER FAN	2
57	H00348	CONDENSER COIL	1
58	H00341	FILTER DRIER	1
59	HDV001A	VERTICAL SUCTION PIPE+CAPILLARY A	1
60	N/A		
61	N/A		
62	N/A		
63	H00333	DOOR HINGE /DOWN	1
64	N/A		
65	N/A		



NO.	ENTRÉE #	DESCRIPTION	QTY
1	C20021	DOOR HINGE /DOWN	3
2	H00316	CASTER, 4" DIAMETER W/ BRAKE	3
4	C2194687	LIGHT BULB, E12, LDE 3W (CF3-DV)	2
5	N/A	BODY	1
6	H00317	CASTER, 4" DIAMETER W/O BRAKE	2
7	H00327	DOWN HINGE AXIS JACKET	3
8	H00324-2	DOOR	2
9	H00325-2	GASKET	3
11	H00328	HINGE CARTRIDGE, SELF CLOSING	3
12	H00308	SHELF/LEFT/RIGHT	6
13	C3234860	PILASTER CLIP	36
14	H00342	PILASTER	12
15	N/A	UNIT BOARD	1
16	H00027F	COMPRESSOR KIT, NJ2192JK 220VAC + FILTER DRYER	1
17	H00113	BASKET GUARD GRILLS	2
18	H00110	CONDENSER FAN	2
19	H03308	CAPILLARY	1
20	H00341	FILTER DRIER	1
21	C2194682	POWER CORD, 12AWG/L14-20R	1
22	H00315	UNIT ROOM COVER	1
23	H00348	CONDENSER COIL	1
24	C20010	UNIT ROOM TOP COVER	1
25	C30010	WATER BOX	1
26	C2194691	MAIN SWITCH	1
27	H00204	THERMOSTAT	1
28	N/A	THERMOSTAT WASHER	1
29	C2194677	DOOR SWITCH	3

NO.	ENTRÉE #	DESCRIPTION	QTY
30	H00340	LOCK	1
31	C20013	FRONT PANEL	1
32	H00321	UPPER SHROUD HINGE	2
33	N/A	FIXING STRIP	1
34	H00220	CONTACTOR FOR COMPRESSOR	1
35	H00216	TERMINAL BLOCK	1
36	N/A	DISCHARGE PIPE	1
37	H00209	LAMP COVER	1
38	H00327	DOWN HINGE AXIS	3
39	N/A	FIXED BOARD OF EVAPORATOR	1
40	N/A	PROBE PADDING	1
41	H00335	SENSOR FIXED CLIP	1
42	H00112	EVAPORATOR FAN GUARD	2
43	H00115	MOTOR, EVAPORATOR FAN (240V, 1330 RPM, 7.5 W)	2
44	H00358	EVAPORATOR COIL	1
45	H00200	DEFROST HEATING ELEMENT	1
46	H00143.1	DRAIN PAN, EVAPORATOR 54F (use after 1409)	1
47	H00213	DRAIN PIPE HEATER	1
48	N/A	CIRCLE FAN SUPPORT	1
49	N/A	CIRCLE FAN COVER	1
50	H00207	PROTECTOR FOR HEATING ELEMENT	1
51	N/A	WIND GUIDE FOAM	2
52	N/A	MIDDLE GIRDE	2
53	N/A	MIDDLE GIRDE FIXER	4
54	C2194691	MAIN SWITCH	1
55	H00220-2	CONTACTOR FOR SWITCH	1
12A	H00310	SHELF/MIDDLE	3





Entrée Service Department Contact info:

John Spock

914 Belair Drive

Berwick PA 18603

1-570-752-4602

Email: [john@entree.biz](mailto:john@entree.biz)

Website: <http://www.entree.biz>

For non-Warranty Parts please call our Parts Distributor,



WHALEY PARTS & SUPPLY™

137 Cedar Road

Lexington SC 29073

1-855-394-8933

7 AM to 8 PM EST

<http://www.whaleyfoodservice.com/>

email: [entreparts@whaleyparts.com](mailto:entreparts@whaleyparts.com)