



**PARTS LIST
FOR ONE & TWO
DOOR NARROW REACH-IN
MODELS**



CF1-19/CF1-19



CF2-35/CR2-35

Model Number Breakdown: CF1-19, CR2-35

C = Entrée

F = Freezer

R = Refrigerator

2 = Number of doors on the unit

19 = 19" WIDE

35 = 35" WIDE

Serial Number Date Code:

Example: 1509ENTH00123

The first two numbers are the Year, 15 = 2015

The second two number are the Month, 09 = September

ENTH = Entrée

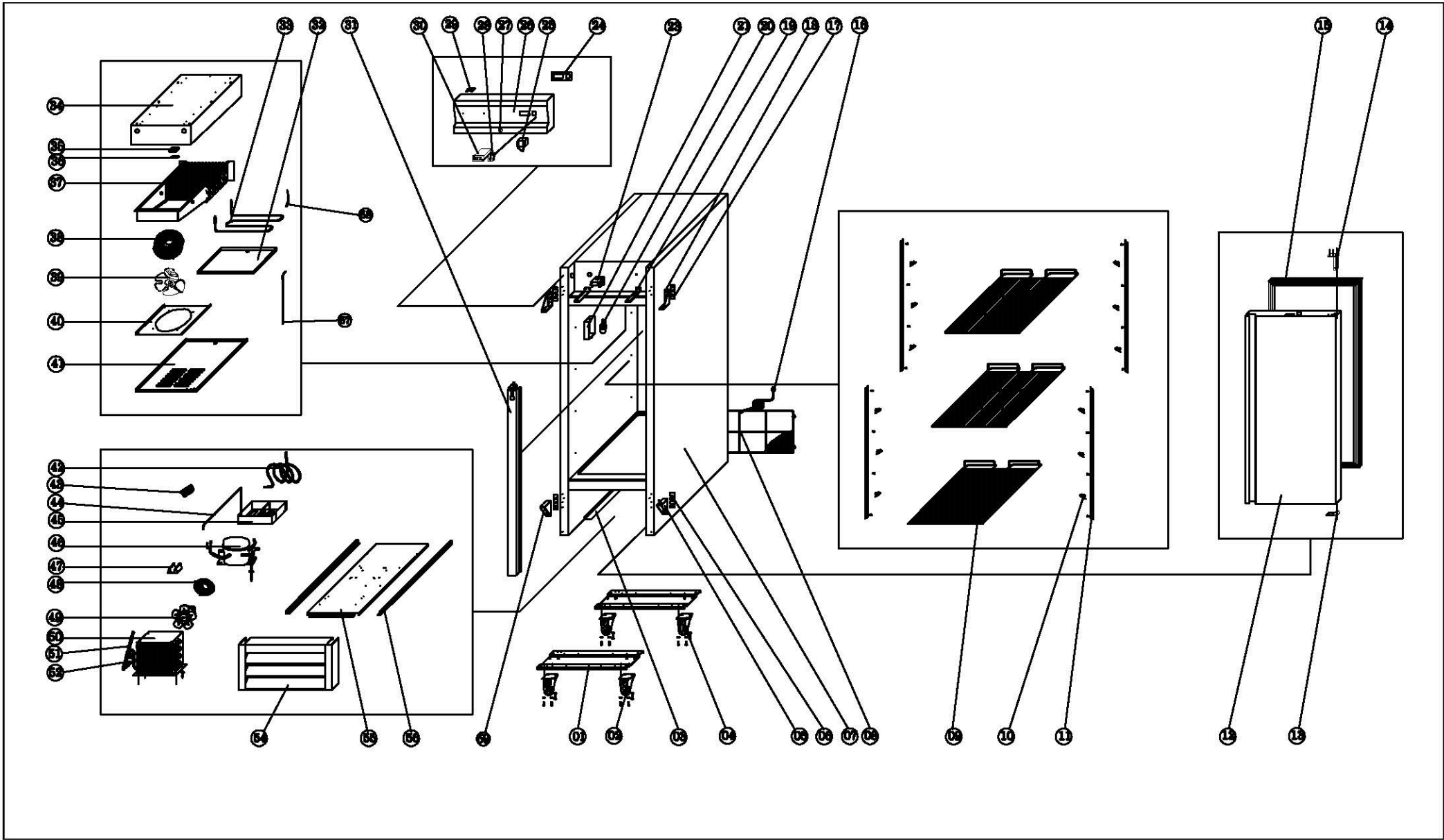
The last FIVE numbers are the numerical sequence of units built that month. In the example this unit would have been the one hundred twenty third unit.

To order parts that are non-warranty, you can contact our parts distributor, Whaley Parts and Supply @ 855-394-8933.

Or, go to their website: [www.whaleyfoodservice .com](http://www.whaleyfoodservice.com)

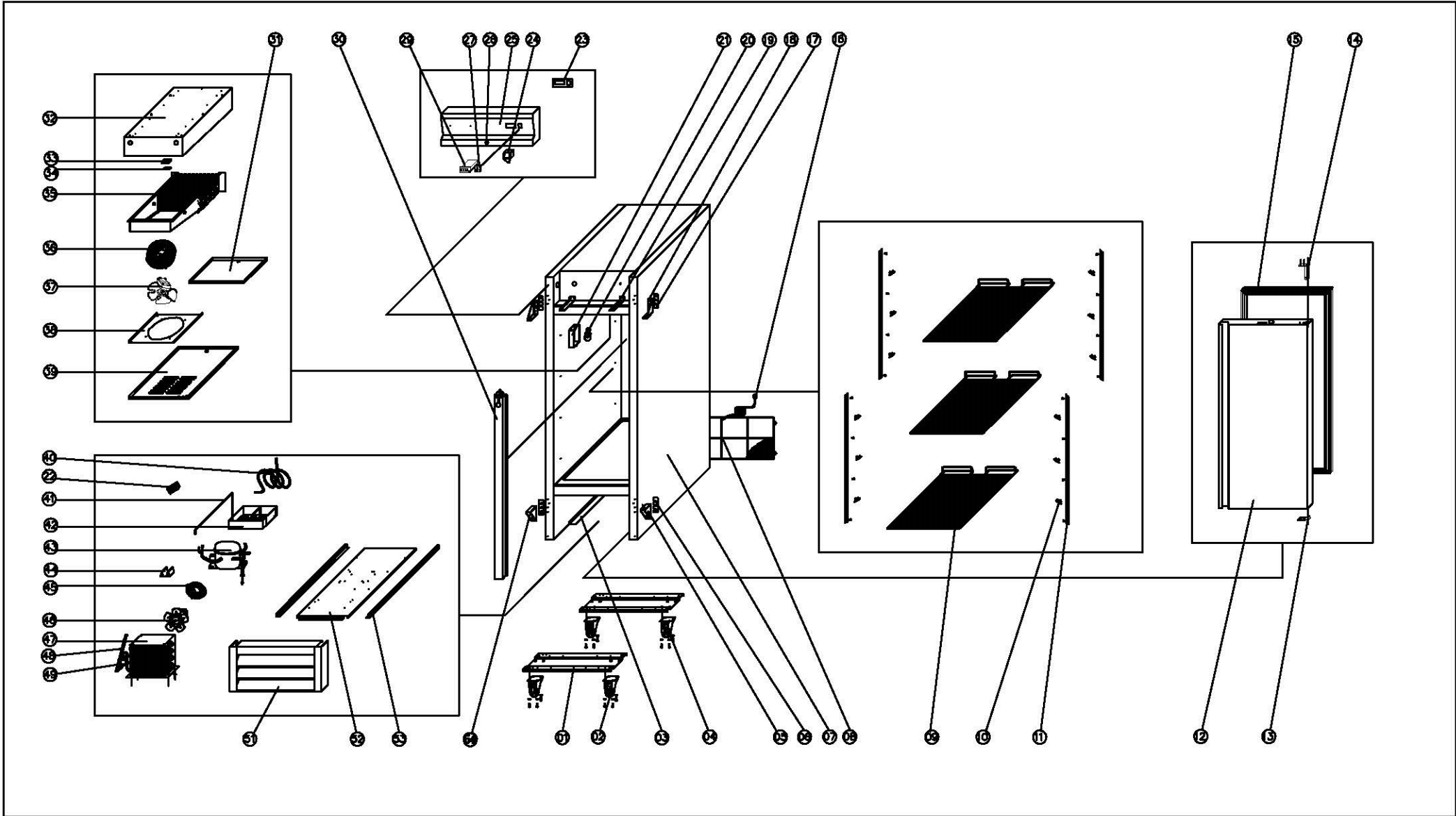
On Whaley's website you can key in the part number, it will tell you the current list price and how many are available.

If you have any questions, you can contact the Entrée Service Department at 570-752-4602, or email: john@entfood.com



MODEL CF1-19

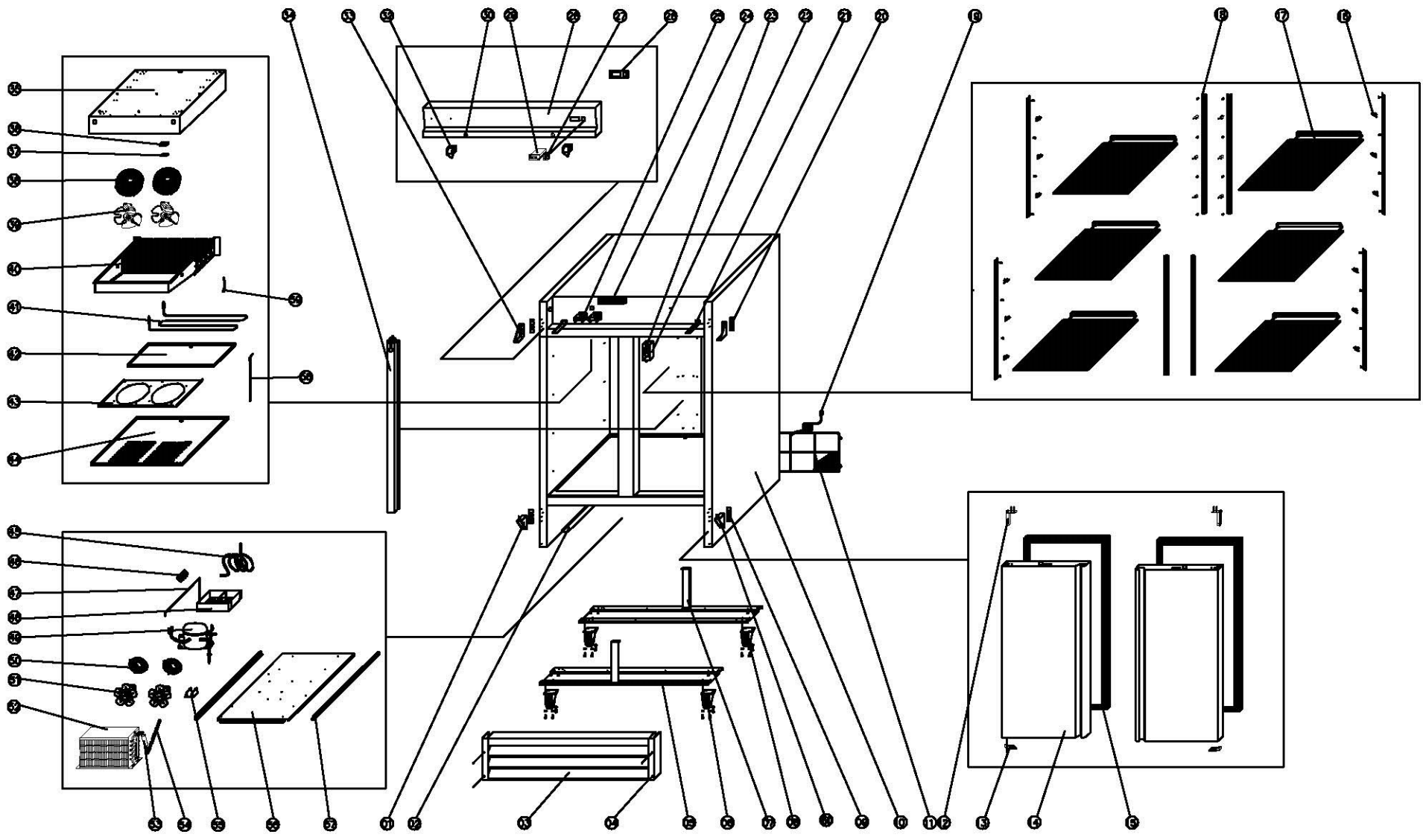
REF#	PART #	DESCRIPTION	QTY
1	N/A		
2	H00316	SWIVEL CASTER W/BRAKE	2
3	N/A		
4	H00317	SWIVEL CASTER W/O BRAKE	2
5	H00333	DOOR HINGE /DOWN	1
6	H00329	SHIMS, LOWER DOOR HINGES	2
7	N/A		
8	H00313	COVER, LOWER, REAR COMPARTMENT	1
9	H00419	SHELF	3
	H00419-C	SHELF + (4) CLIPS	*
10	C3234860	PILASTER CLIP	12
11	H00342	PILASTER	4
12	H00324	DOOR	1
13	H00326	DOWN HINGE AXIS JACKET	1
14	H00328	DOOR SPRING HINGE	2
15	H00325	GASKET	1
16	C2194684	POWER CORD, 14AWG/5-15P	1
17	H00329-1	SHIMS, UPPER DOOR HINGES	2
18	H00331	HINGE, TOP RIGHT	1
	H00330	HINGE, TOP LEFT	1
19	N/A		
20	C2194686	LIGHT BULB, E12 25W /115V	1
21	H00209	LAMP COVER	1
23	H00220	CONTACTOR OF COMPRESSOR	1
	H00220-2	CONTACTOR	1
24	N/A		
25	C2194677	DOOR SWITCH (HC-0504K)	1
26	H00318	UPPER SHROUD	1
27	H00340	LOCK	1
	H00357	KEY ONLY	*
28	C2194691	MAIN SWITCH	1
29	H00321	HINGE, UPPER SHROUD	2
30	H00204	THERMOSTAT	1
	H00205	TEMPERATURE SENSOR (NTC)	2
31	H00311	SUCTION PIPE COVER	1
32	H00146.1	EVAPORATOR WATER PAN	1
33	H00201	DEFROST HEATING ELEMENT	1
34	N/A		1
35	N/A		1
36	H00335	SENSOR FIXED CLIP	1
37	H00354	EVAPORATOR COIL	1
38	H00112	FAN GUARD, EVAPORATOR, WHITE	1
39	H00114	EVAPORATOR FAN	1
40	H00131	EVAPORATOR FAN SUPPORT	1
41	H00151	EVAPORATOR COVER	1
42	N/A		1
43	H00215	TERMINAL BLOCK, 5 POLE	1
44	N/A		1
45	C30004	WATER BOX	1
46	H00023F	COMPRESSOR (SC15CLX.2) W/FILTER DRIER	1
	H02221	HARD START KIT FOR SC15CLX.2	*
47	N/A		1
48	H00113	CONDENSER FAN GUARD	1
49	H00110	CONDENSER FAN	1
50	H01347	CONDENSER COIL	1
51	H00302	CAPILLARY TUBE ID .055" X 118" L	1
52	H00341	FILTER DRIER	1
		N/A - NOT AVAILABLE	



MODEL CR1-19

REF#	PART #	DESCRIPTION	QTY
1	N/A		
2	H00316	SWIVEL CASTER W/BRAKE	2
3	N/A		
4	H00317	SWIVEL CASTER W/O BRAKE	2
5	H00333	DOOR HINGE /DOWN	1
6	H00329	SHIMS, LOWER DOOR HINGES	2
7	N/A		
8	H00313	COVER, LOWER, REAR COMPARTMENT	1
9	H00419	SHELF	3
	H00419-C	SHELF + (4) CLIPS	*
10	C3234860	PILASTER CLIP	12
11	H00342	PILASTER	4
12	H00324	DOOR	1
13	H00326	DOWN HINGE AXIS JACKET	1
14	H00328	DOOR SPRING HINGE	1
15	H00325	GASKET	1
16	C2194684	POWER CORD, 14AWG/5-15P	1
17	H00329-1	SHIMS, UPPER DOOR HINGES	2
18	H00331	HINGE, TOP RIGHT	1
	H00330	HINGE, TOP LEFT	1
19	N/A		
20	C2194686	LIGHT BULB, E12 25W /115V	1
21	H00209	LAMP COVER	1
22	H00215	TERMINAL BLOCK, 5 POLE	3
23	N/A		
24	C2194677	DOOR SWITCH (HC-0504K)	1
25	H00318	UPPER SHROUD	1
26	H00340	LOCK	1
	H00357	KEY ONLY	*
27	C2194691	MAIN SWITCH	1
28	H00321	HINGE, UPPER SHROUD	2
29	H00219	THERMOSTAT	1
	H00205	TEMPERATURE SENSOR (NTC)	2
30	H00311	SUCTION PIPE COVER	1
31	H00146.1	EVAPORATOR WATER PAN	1
32	N/A		
33	N/A		
34	H00335	SENSOR FIXED CLIP	1
35	H00354	EVAPORATOR COIL	1
36	H00112	FAN GUARD, EVAPORATOR, WHITE	1
37	H00114	EVAPORATOR FAN	1
38	H00131	EVAPORATOR FAN SUPPORT	1
39	H00151	EVAPORATOR COVER	1
40	N/A		
41	N/A		
42	C30004	WATER BOX	1
43	H00020F	COMPRESSOR (FFI8.5HAK)W/FILTER DRIER	1
	H01220	HARD START KIT FOR FFI8.5HAK	
44	N/A		
45	H00123	CONDENSER FAN GUARD - BLACK	1
46	H00110	CONDENSER FAN	1
47	H01347	CONDENSER COIL	1
48	H00301	CAPILLARY TUBE ID .055" X 196.9" L	1
49	H00341	FILTER DRIER	1
51	H00337	BOTTOM SHROUD	1
52	N/A		
53	N/A		
54	H00332	LOWER DOOR HINGE	1

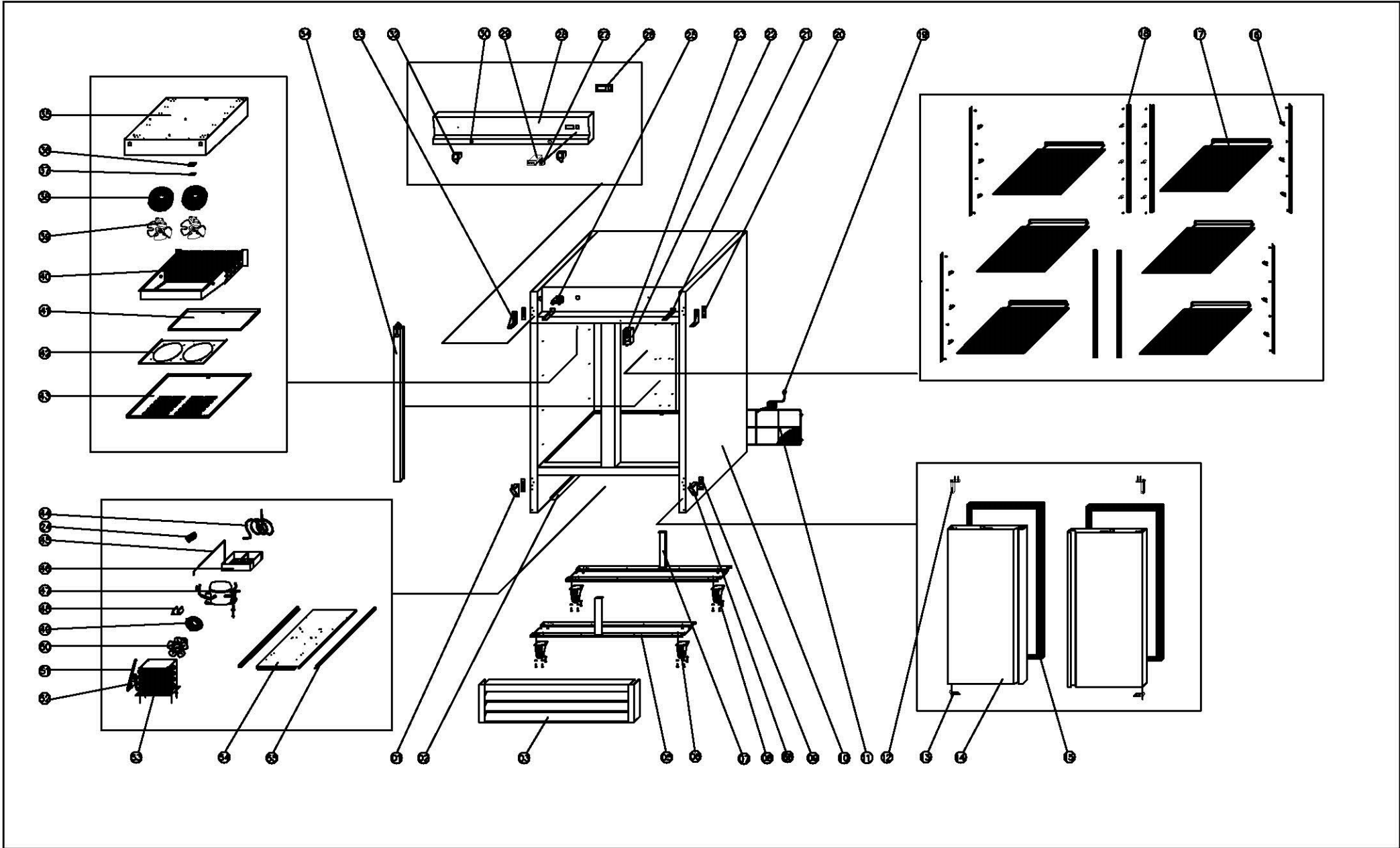
N/A - NOT AVAILABLE



MODEL CF2-35

REF#	PART #	DESCRIPTION	QTY
1	H00333	DOOR HINGE /DOWN	1
2	N/A		
3	H00338-1	LOWER SHROUD	1
4	N/A		
5	N/A		
6	H00316	SWIVEL CASTER W/BRAKE	2
7	N/A		
8	H00317	SWIVEL CASTER W/O BRAKE	2
9	H00329	SHIMS, LOWER DOOR HINGES	2
10	N/A		
11	H00314	UNIT ROOM COVER	1
12	H00328	DOOR SPRING HINGE	2
13	H00326	DOWN HINGE AXIS JACKET	2
14	H00324-1	DOOR/LEFT/RIGHT	2
15	H00325-1	GASKET	2
16	C3234860	PILASTER CLIP	24
17	H00435	SHELF	6
	H00435-C	SHELF + (4) CLIPS	*
18	H00342	PILASTER	8
19	C2194684	POWER CORD, 14AWG/5-15P	1
20	H00329-1	SHIMS, UPPER DOOR HINGES	2
21	N/A		
22	H00209	LAMP COVER	1
23	C2194686	LIGHT BULB, E12 25W /115V	1
25	H00220	CONTACTOR - COMPRESSER	1
	H00220-2	CONTACTOR FOR SWITCH	1
26	N/A		
27	C2194691	MAIN SWITCH	1
28	H00319-19	UPPER SHROUD	1
29	H00204	THERMOSTAT	1
	H00205	TEMPERATURE SENSOR (NTC)	2
30	H00340	LOCK	2
	H00357	KEY ONLY	*
31	H00321	HINGE, UPPER SHROUD	2
32	C2194677	DOOR SWITCH (HC-0504K)	1
33	H00330	HINGE, TOP LEFT	1
	H00331	HINGE, TOP RIGHT	1
34	H00311	SUCTION PIPE COVER	1
35	N/A		
36	N/A		
37	H00335	SENSOR FIXED CLIP	1
38	H00112	FAN GUARD, EVAPORATOR, WHITE	2
39	H00114	EVAPORATOR FAN	2
40	H00351	EVAPORATOR COIL	1
41	H00202	DEFROST HEATING ELEMENT	1
42	H00143.1	EVAPORATOR WATER PAN	1
43	H00133	EVAPORATOR FAN SUPPORT	1
44	H00153	EVAPORATOR COVER, WHITE	1
45	N/A		
46	H00215	TERMINAL BLOCK, 5 POLE	1
47	N/A		
48	C30003	WATER BOX	1
49	H00024F	COMPRESSOR (SC18CLX.2) W/FILTER DRIER	1
	H01223	HARD START KIT, SC18CLX.2	
50	H00123	CONDENSER FAN GUARD - BLACK	1
51	H00120	CONDENSER FAN	2
52	H00347	CONDENSER COIL, 1410 BTU	1
53	H00341	FILTER DRIER	1
54	H00035	CAPILLARY TUBE ID .055" X 200.8" L	1
55	N/A		
56	N/A		
57	N/A		
58	H00211	CONDENSATE DRAIN HEATER	1
59	H00207	PROTECTOR FOR HEATING ELEMENT	1
60	H00333	DOOR HINGE /DOWN	1

N/A - NOT AVAILABLE



MODEL CR2-35

REF#	PART #	DESCRIPTION	QTY
1	H00333	DOOR HINGE /DOWN	1
2	N/A		
3	H00338-1	LOWER SHROUD	1
5	N/A		
6	H00316	SWIVEL CASTER W/BRAKE	2
7	N/A		
8	H00317	SWIVEL CASTER W/O BRAKE	2
9	H00329	SHIMS, LOWER DOOR HINGES	2
10	N/A		
11	H00314	UNIT ROOM COVER	1
12	H00328	DOOR SPRING HINGE	2
13	H00326	DOWN HINGE AXIS JACKET	2
14	H00324-1	DOOR/RIGHT/LEFT	1
15	H00325-1	GASKET	2
16	C3234860	PILASTER CLIP	24
17	H00435	SHELF	6
17.1	H00435-C	SHELF + (4) CLIPS	*
18	H00342	PILASTER	8
19	C2194684	POWER CORD, 14AWG/5-15P	1
20	H00329-1	SHIMS, UPPER DOOR HINGES	2
21	N/A		
22	H00209	LAMP COVER	1
23	C2194686	LIGHT BULB, E12 25W /115V	1
24	H00215	TERMINAL BLOCK, 5 POLE	3
25	H00220	CONTACTOR FOR COMPRESSOR	1
	H00220-2	CONTACTOR FOR POWER SWITCH	1
26	N/A		
27	C2194691	MAIN SWITCH	1
28	H00319-19	UPPER SHROUD	1
29	H00219	THERMOSTAT	1
	H00205	TEMPERATURE SENSOR (NTC)	2
30	H00340	LOCK	2
	H00357	KEY ONLY	*
31	H00321	HINGE, UPPER SHROUD	2
32	C2194677	DOOR SWITCH (HC-0504K)	1
33	H00330	HINGE, TOP LEFT	1
	H00331	HINGE, TOP RIGHT	
34	H00311	SUCTION PIPE COVER	1
35	N/A		
36	N/A		
37	H00335	SENSOR FIXED CLIP	1
38	H00112	FAN GUARD, EVAPORATOR, WHITE	2
39	H00114	EVAPORATOR FAN	2
40	H00350	EVAPORATOR COIL	1
41	H00143.1	EVAPORATOR WATER PAN	1
42	H00132	EVAPORATOR FAN SUPPORT	1
43	H00153	EVAPORATOR COVER, WHITE	1
44	N/A		
45	N/A		
46	C30003	WATER BOX	1
47	H00019F	COMPRESSOR KIT, FFU130HAK + FILTER DRYER	1
	H00225	HARD START KIT FOR FFU130HAK	
48	N/A		1
49	H00113	CONDENSER FAN GUARD - BLACK	1
50	H00110	CONDENSER FAN	1
51	H01302	CAPILLARY TUBE .055" ID X 118.1" L	1
52	H00341	FILTER DRIER	1

N/A - NOT AVAILABLE



PARTS: 1-704-900-2068 OPTION 2

Website: <http://www.entree.biz>