



PARTS LIST
FOR PIZZA PREP MODELS:
P47-HC, P70-HC, AND P94-HC
(R290)



The serial number breakdown:

Example: 1809ENTQ00123

The first two numbers are the Year, 18 = 2018

The second two numbers are the Month, 09 = September

ENT = Entrée

The fourth alpha character will note the Freon Type on the HC Models.

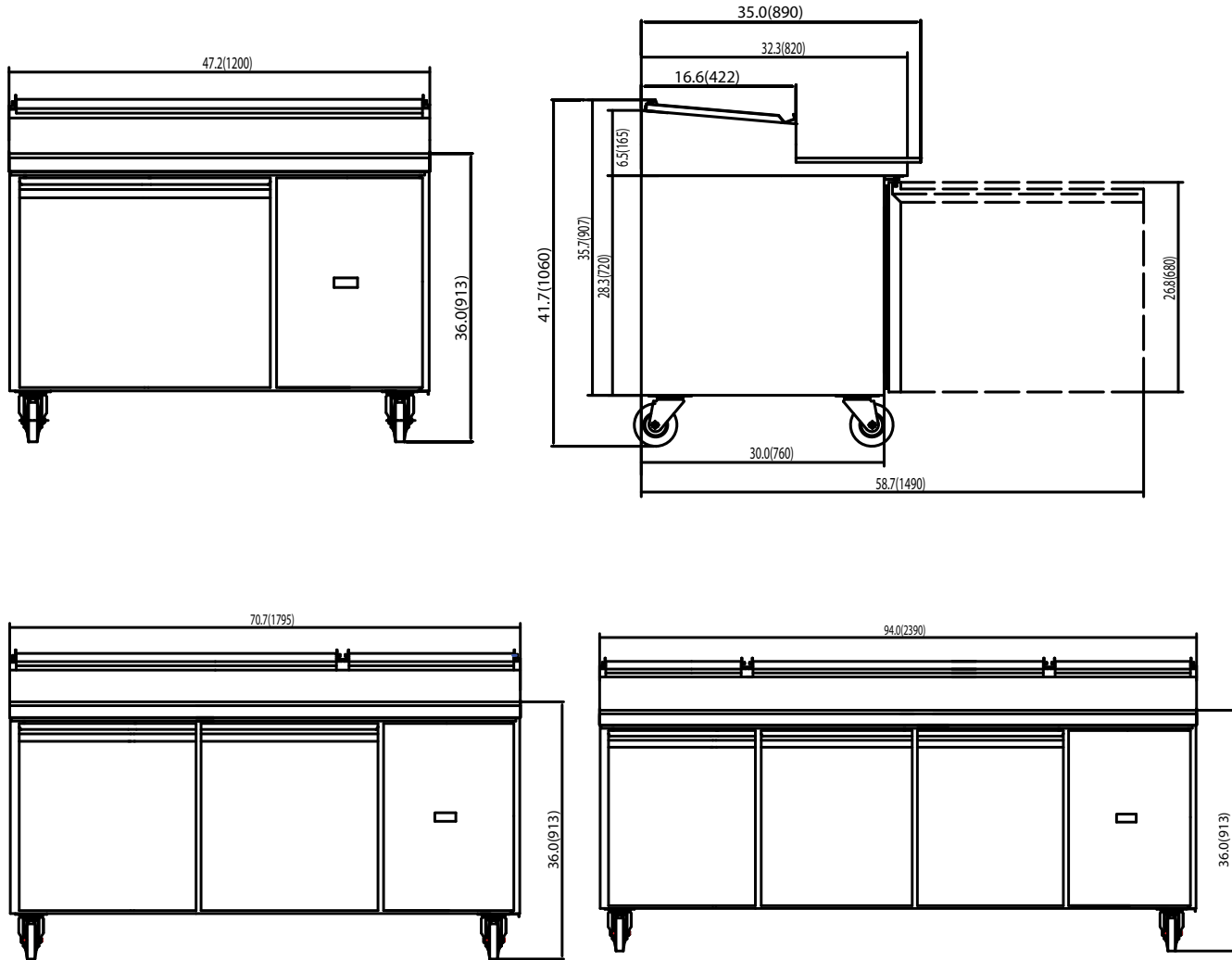
Q = R290, B = R600

The last FIVE numbers are the numerical sequence of units built that month. In the example this unit would have been the one hundred twenty third unit.

To order parts that are non-warranty, you can contact our parts distributor, 704-900-2068, option #2.

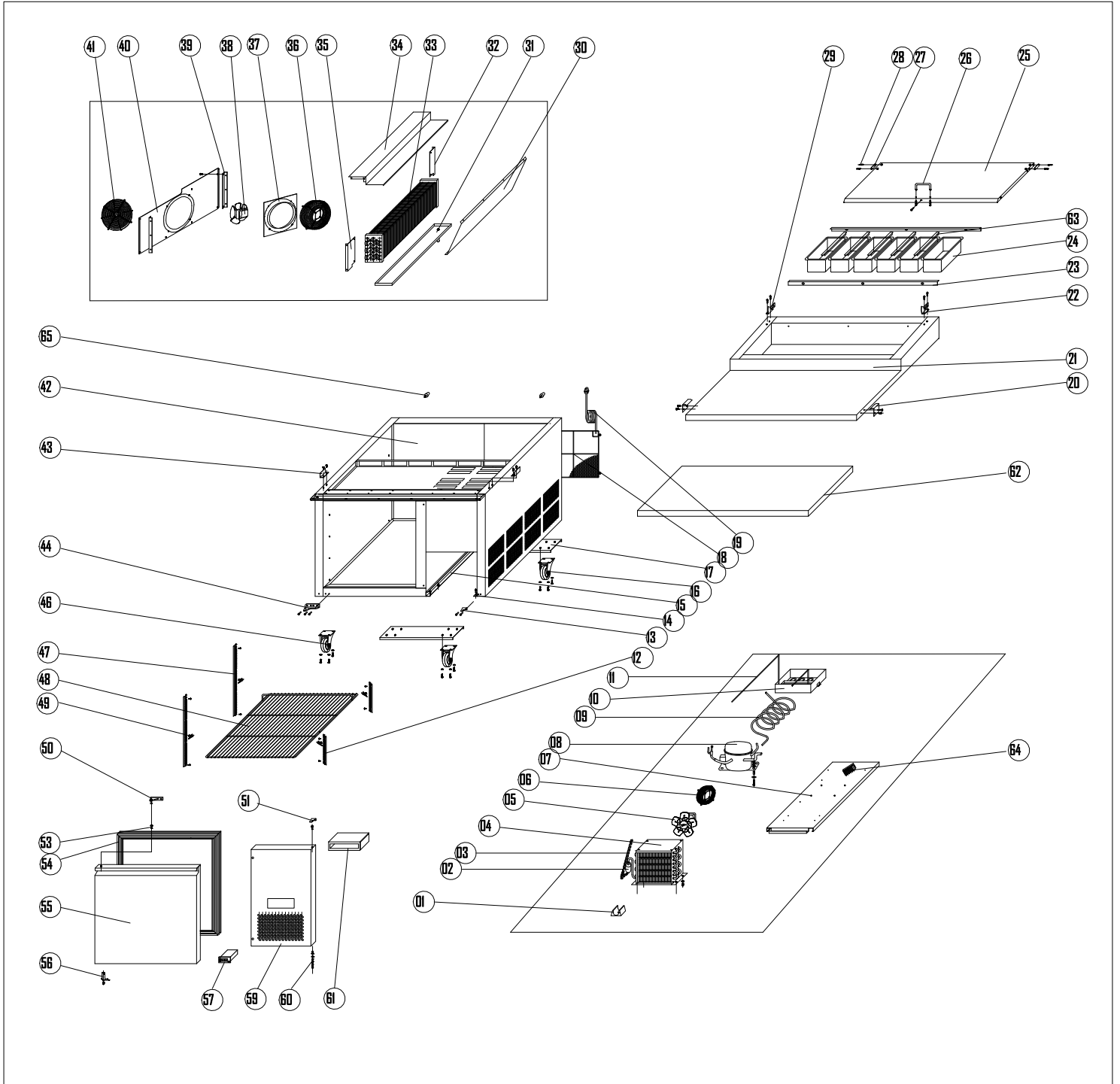


DETAILS AND DIMENSIONS



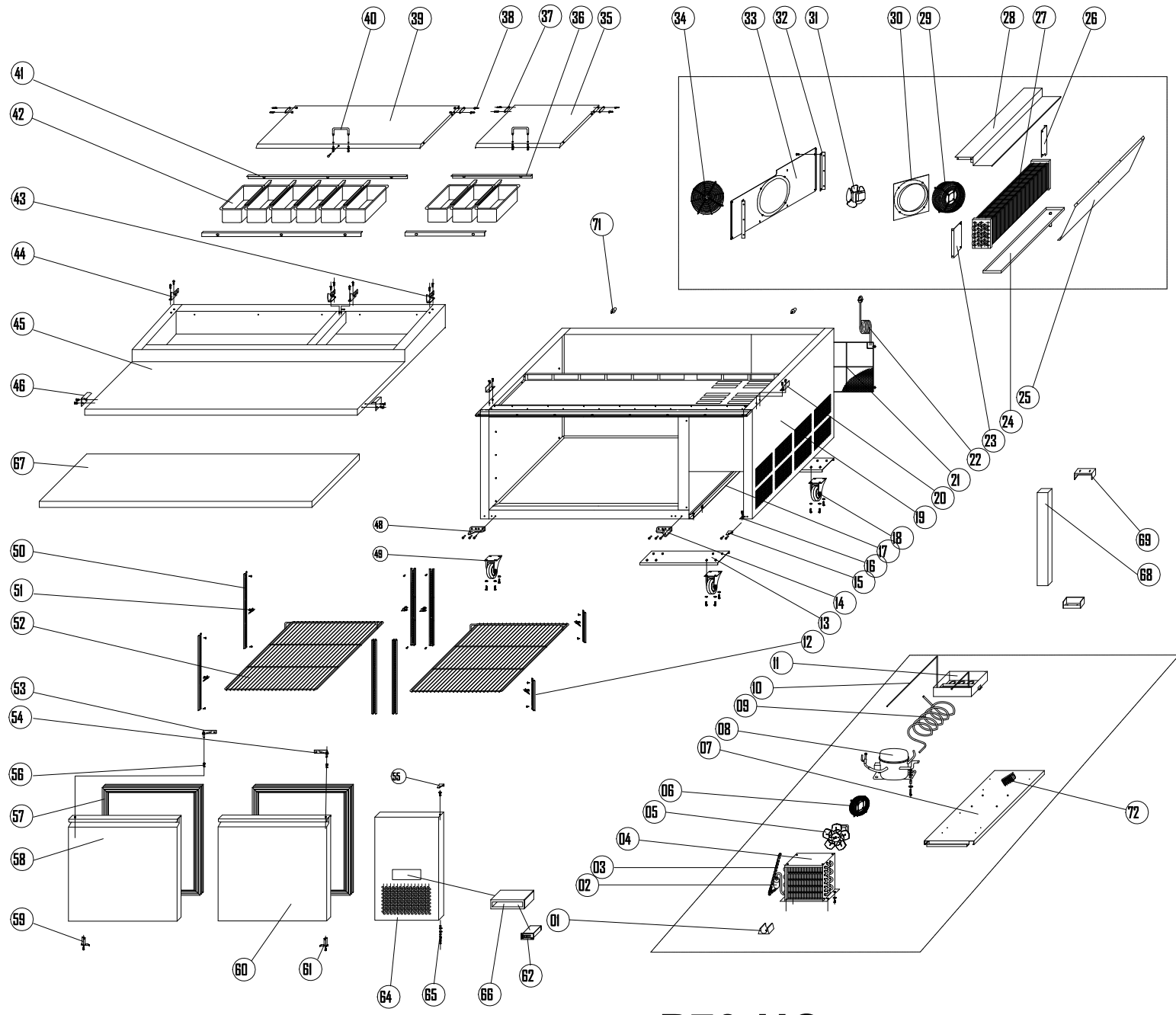
Model	Doors	Capacity (cu.ft)	Shelves	Pans	Cabinet Dim (inches)			HP	Voltage	Amps	NEMA Plug	Cord Length	Crated Weight
					L	D	H						
P47	1	12	1	6 (1/3)	47.2	33.3	41.7	1/2	115/60/1	5	5-15P	10	348
P70	2	22	2	9 (1/3)	70.7	33.3	41.7	1/2	115/60/1	5	5-15P	10	432
P94	3	32	3	12 (1/3)	94.1	33.3	41.7	3/4	115/60/1	5.5	5-15P	10	582

P47-HC



Parts List for P47-HC Pizza Prep Model- R290

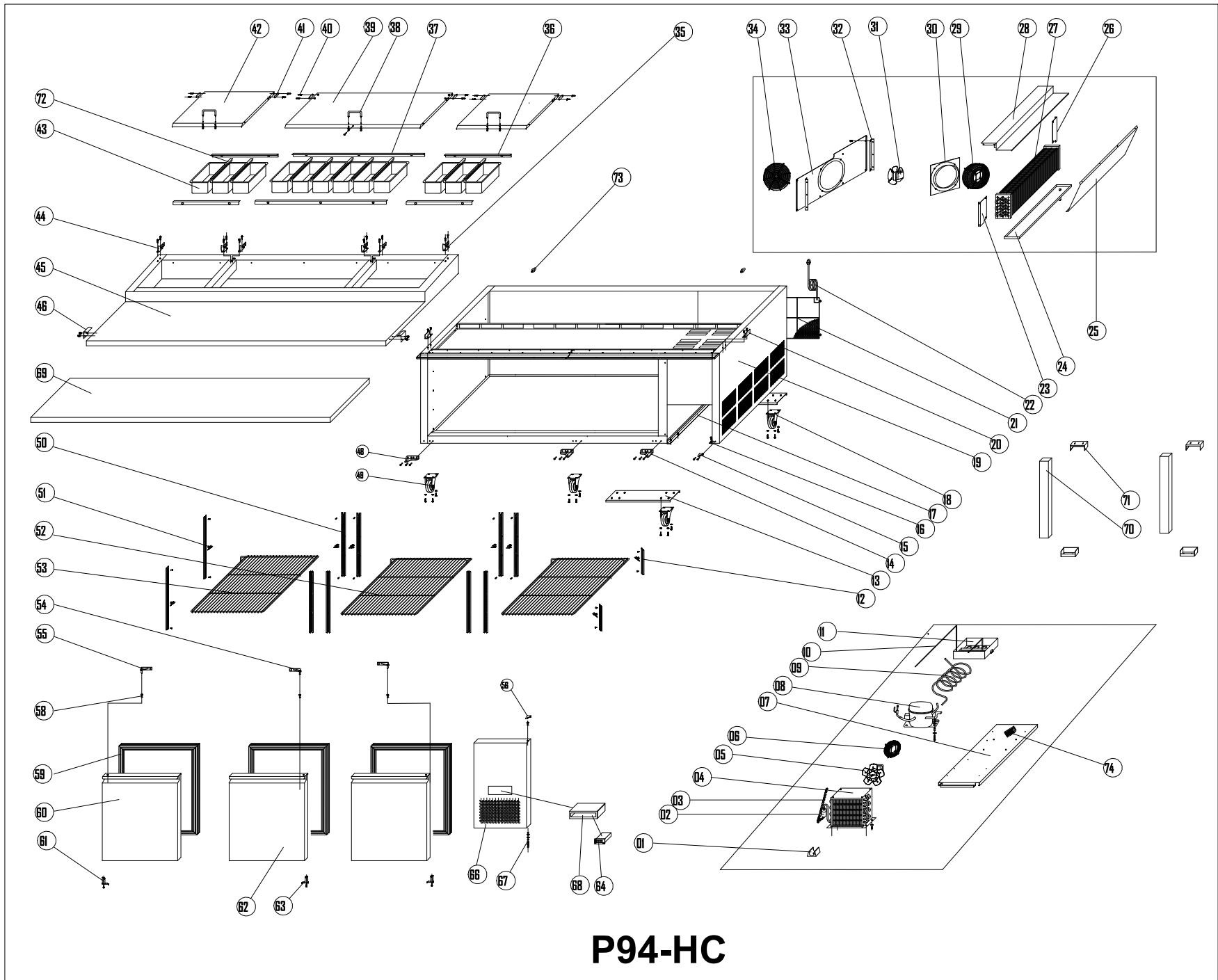
NO.	PART #	DESCRIPTION	QTY
1	N/A	DRIER SUPPORT	1
2	H00341	FILTER DRIER	1
3	H03302	CAPILLARY TUBE ID.055" X 98.4" L	1
4	HC0348	CONDENSER	1
5	H00110	CONDENSER FAN MOTOR, 9W, 115VAC	1
6	H00123	FAN GUARD BLACK, CONDENSER	1
7	N/A	CONDENSER PANEL	1
8	H00039F	COMPRESSOR KIT, EM2X3125U + FILTER DRYER	1
8	H00228	START KIT FOR EM2X3125U	
9	HC0132	SUCTION PIPE	1
10	C30004	CONDENSER DRAIN PAN	1
11	HC0129	EVAPORATE PIPE	1
12	H01342	PILASTER	2
13	H03327	HINGE, PIZZA CONDENSER COVER (LOWER)	1
14	N/A	RIGHT GUIDE	1
15	N/A	LEFT GUIDE	1
16	H00317	CASTER, 4" DIAMETER W/O BRAKE	2
17	N/A	CASTER SUPPORT CHANEL	2
18	H02314	REAR MACHINE COMPARTMENT COVER	1
19	C2194684	POWER CORD, 14AWG/NEMA 5-15P	1
20	H00382	CUTTING BOARD MOUNTING BRACKET	2
21	N/A	MAIN TOP	1
22	H00383	LID HINGE, RIGHT (PIZZA)	1
23	H02344	FRONT/BACK SUPPORT RAIL (6 WIDE)	2
24	H01241	STANDARD PAN, 1/3 SIZE X 6"	6
25	H00375	LID (PIZZA)	1
26	H00376	HANDLE FOR COVER	1
27	SEE H01234	STRENGTHENING BOARD	2
28	H01234	LID HING PIN	4
29	H00380	LID HINGE, LEFT (PIZZA)	1
30	N/A	AIR FLOW PANEL	1
31	H01146	EVAPORATOR DRAIN PAN (23.2" X 4.75" X .6")	1
32	N/A	MOUNTING BRACKET	1
33	H01346	EVAPORATOR COIL	1
34	H03156	EVAPORATOR COVER	1
35	N/A	FRONT MOUNTING BRACKET	1
36	H01122	GUARD, EVAP FAN WHITE	1
37	H03132	MOTOR SUPPORT, EVAP FAN	1
38	H00114-1	MOTOR, ECM7108, EVAPORATOR FAN (1082 CFM, 1300 RPM) 14W	1
39	N/A	MOUNTING BRACKET	2
40	N/A	FAN COVER	1
41	H01123	EVAPORATOR FAN GRILL	1
42	N/A	BODY	1
43	N/A	MAIN TOP BRACKET	2
44	C01327LB	HINGE, LOWER LEFT	1
46	H00316	CASTER, 4" DIAMETER W/BRAKE	2
47	H02342	PILASTER	2
48	H01311	SHELF	1
49	C3234860	PILASTER CLIP	4
50	C01327	HINGE, TOP LEFT	1
51	H03328	HINGE, PIZZA CONDENSER COVER (UPPER)	1
53	H00327B	BUSHING	3
54	H01325	GASKET, FULL DOOR, 25 1/2" LONG X 26 11/16" WIDE	1
55	H01322	DOOR, LEFT	1
56	H00328-2	HINGE CARTRIDGE, SELF CLOSING	1
57	H00219	CONTROLLER, REFRIGERATOR DIXELL XR20C	1
57	H00205	TEMPERATURE SENSOR (NTC)	2
59	H00386	SIDE CONDENSER COVER (PIZZA)	1
60	H00327	HINGE PIN WITH NUT	1
61	N/A	THERMOSTAT PROTECTIVE BOX	1
61	N/A	THERMOSTAT PROTECTIVE BOX	1
62	H01246	CUTTING BOARD	1
63	H02347	PAN SUPPORT	5
64	H00215	TERMINAL BLOCK, 5 POLE	1
65	H02315	REAR WALL SPACER	2



P70-HC

Part List for Model P70-HC R290

NO.	PART #	DESCRIPTION	QTY
1	N/A	DRIER SUPPORT	1
2	H00341	FILTER DRIER	1
3	H00303	CAPILLARY TUBE .055" ID X 118.1" L	1
4	HC0348	CONDENSER	1
5	H00110	CONDENSER FAN MOTOR, 9W, 115VAC	1
6	H00123	FAN GUARD BLACK, CONDENSER	1
7	N/A	CONDENSER PANEL	1
8	H00039F	COMPRESSOR KIT, EM2X3125U + FILTER DRYER	1
8	H00228	START KIT FOR EM2X3125U	
9	HC0133	SUCTION PIPE	1
10	HC0129	EVAPORATE PIPE	1
11	C30004	CONDENSER DRAIN PAN	1
12	H01342	PILASTER	2
13	N/A	CASTER SUPPORT CHANEL	2
14	C02327RB	HINGE, LOWER RIGHT	1
15	H03327	HINGE, PIZZA CONDENSER COVER (LOWER)	1
16	N/A	RIGHT GUIDE	1
17	N/A	LEFT GUIDE	1
18	H00317	CASTER, 4" DIAMETER W/O BRAKE	2
19	N/A	BODY	1
20	N/A	MAIN TOP BRACKET	2
21	H02314	REAR MACHINE COMPARTMENT COVER	1
22	C2194684	POWER CORD, 14AWG/NEMA 5-15P	1
23	N/A	FRONT MOUNTING BRACKET	1
24	H01146	EVAPORATOR DRAIN PAN (23.2" X 4.75" X .6")	1
25	N/A	AIR FLOW PANEL	1
26	N/A	MOUNTING BRACKET	1
27	H01346	EVAPORATOR COIL	1
28	H03156	EVAPORATOR COVER	1
29	H01122	GUARD, EVAP FAN WHITE	1
30	H03132	MOTOR SUPPORT, EVAP FAN	1
31	H00114-1	MOTOR, ECM7108, EVAPORATOR FAN (1082 CFM, 1300 RPM) 14W	1
32	N/A	MOUNTING BRACKET	2
33	N/A	FAN COVER	1
34	H01123	EVAPORATOR FAN GRILL	1
35	H00374	LID (PIZZA)	1
36	H02345	FRONT/BACK SUPPORT RAIL (3 WIDE)	2
36	H02347	PAN SUPPORT	5
37	SEE H01234	STRENGTHENING BOARD	4
38	H01234	LID HING PIN	8
39	H00375	LID (PIZZA)	1
40	H00376	HANDLE FOR COVER	2
41	H02344	FRONT/BACK SUPPORT RAIL (6 WIDE)	2
42	H01241	STANDARD PAN, 1/3 SIZE X 6"	9
43	H00383	LID HINGE, RIGHT (PIZZA)	2
44	H00380	LID HINGE, LEFT (PIZZA)	2
45	N/A	MAIN TOP	1
46	H00382	CUTTING BOARD MOUNTING BRACKET	2
48	C01327LB	HINGE, LOWER LEFT	1
49	H00316	CASTER, 4" DIAMETER W/BRAKE	2
50	H02342	PILASTER	6
51	C3234860	PILASTER CLIP	8
52	H02307	SHELF	2
53	C01327	HINGE, TOP LEFT	1
54	C02327	HINGE, TOP RIGHT	2
55	H03328	HINGE, PIZZA CONDENSER COVER (UPPER)	1
56	H00327B	BUSHING	4
57	H01319	GASKET, FULL DOOR, P70, 25 1/2" LONG X 24 11/64" WIDE	2
58	H02324L	DOOR, LEFT	1
59	H00328-2	HINGE CARTRIDGE, SELF CLOSING	1
60	H02324R	DOOR, RIGHT	1
61	H00328-2	DOOR SPRING HINGE/ RIGHT	1
62	H00219	CONTROLLER, REFRIGERATOR DIXELL XR20C	1
62	H00205	TEMPERATURE SENSOR (NTC)	2
64	H00386	SIDE CONDENSER COVER (PIZZA)	1
65	H00327	HINGE PIN WITH NUT	1
66	N/A	THERMOSTAT PROTECTIVE BOX	1
66	N/A	THERMOSTAT PROTECTIVE BOX	1
67	H01247	CUTTING BOARD	1
68	HC00019	CENTER MULLION	1
68	XXXX	CENTER MULLION	1
69	HC00113	CENTER MULLION BRACKET	2
70	H02347	PAN SUPPORT	7
71	H02315	REAR WALL SPACER	2
72	H00215	TERMINAL BLOCK, 5 POLE	1



P94-HC

Parts List for Model P94-HC R290

NO.	PART #	DESCRIPTION	QTY
1	N/A	DRIER SUPPORT	1
2	H00341	FILTER DRIER	1
3	H03303	CAPILLARY TUBE .055" ID X 157.7 L	1
4	HC0348	CONDENSER	1
5	H00110	CONDENSER FAN MOTOR, 9W, 115VAC	1
6	RD00111	CONDENSER FAN COVER	1
7	N/A	CONDENSER PANEL	1
8	HC0009F	COMPRESSOR (NUG90LR) W/ FILTER DRIER	1
8	H00230	START KIT FOR NUG90LR	
9	HC0134	SUCTION PIPE	1
10	HC0129	EVAPORATE PIPE	1
11	C30004	CONDENSER DRAIN PAN	1
12	H01342	PILASTER	2
13	N/A	CASTER SUPPORT CHANEL	2
14	C02327RB	HINGE, LOWER RIGHT	2
15	H03327	HINGE, PIZZA CONDENSER COVER (LOWER)	1
16	N/A	RIGHT GUIDE	1
17	N/A	LEFT GUIDE	1
18	H00317	CASTER, 4" DIAMETER W/O BRAKE	2
19	N/A	BODY	1
20	N/A	MAIN TOP BRACKET	2
21	H02314	REAR MACHINE COMPARTMENT COVER	1
22	C2194684	POWER CORD, 14AWG/NEMA 5-15P	1
23	N/A	FRONT MOUNTING BRACKET	1
24	H01146	EVAPORATOR DRAIN PAN (23.2" X 4.75" X .6")	1
25	N/A	AIR FLOW PANEL	1
26	N/A	MOUNTING BRACKET	1
27	H01346	EVAPORATOR COIL	1
28	H03156	EVAPORATOR COVER	1
29	H01122	GUARD, EVAP FAN WHITE	1
30	H03132	MOTOR SUPPORT, EVAP FAN	1
31	H00114-1	MOTOR, ECM7108, EVAPORATOR FAN (1082 CFM, 1300 RPM) 14W	1
32	N/A	MOUNTING BRACKET	2
33	N/A	FAN COVER	1
34	H01123	EVAPORATOR FAN GRILL	1
35	H00383	LID HINGE, RIGHT (PIZZA)	2
36	H02345	FRONT/BACK SUPPORT RAIL (3 WIDE)	4
37	H02344	FRONT/BACK SUPPORT RAIL (6 WIDE)	2
38	H00376	HANDLE FOR COVER	3
39	H00375	LID (PIZZA)	1
40	H01234	LID HING PIN	12
41	SEE H01234	STRENGTHENING BOARD	6
42	H00374	LID (PIZZA)	2
43	H01241	STANDARD PAN, 1/3 SIZE X 6"	12
44	H00380	LID HINGE, LEFT (PIZZA)	2
45	N/A	MAIN TOP	1
46	H00382	CUTTING BOARD MOUNTING BRACKET	2
48	C01327LB	HINGE, LOWER LEFT	1
49	H00316	CASTER, 4" DIAMETER W/BRAKE	2
50	H02342	PILASTER	10
51	C3234860	PILASTER CLIP	12
52	H03307	SHELF / MIDDLE	1
53	H02308	SHELF LEFT /RIGHT	2
54	C02327	HINGE, TOP RIGHT	2
55	C01327	HINGE, TOP LEFT	1
56	H03382	HINGE, PIZZA CONDENSER COVER (TOP)	1
58	H00327B	BUSHING	4
59	H01318	GASKET, FULL DOOR, P94, 25 1/2" LONG X 23 5/16" WIDE	2
60	H00323L	DOOR, LEFT	1
61	H00328-2	HINGE CARTRIDGE, SELF CLOSING	1
62	H00323R	DOOR, RIGHT	2
64	H00219	CONTROLER, REFRIGERATOR DIXELL XR20C	1
64	H00205	TEMPERATURE SENSOR (NTC)	2
66	H00367	SIDE CONDENSER COVER (PIZZA)	1
67	H00327	HINGE PIN WITH NUT	1
68	N/A	THERMOSTAT PROTECTIVE BOX	1
68	N/A	THERMOSTAT PROTECTIVE BOX	1
69	H01248	CUTTING BOARD	1
70	HC00019	CENTER MULLION	2
70	XXXX	CENTER MULLION	2
71	HC00113	CENTER MULLION BRACKET	4
72	H02347	PAN SUPPORT	9
73	H02315	REAR WALL SPACER	2
74	H00215	TERMINAL BLOCK, 5 POLE	1



For Tech Support or Parts Call:

1-704-900-2068

Website: <http://www.entree.biz>