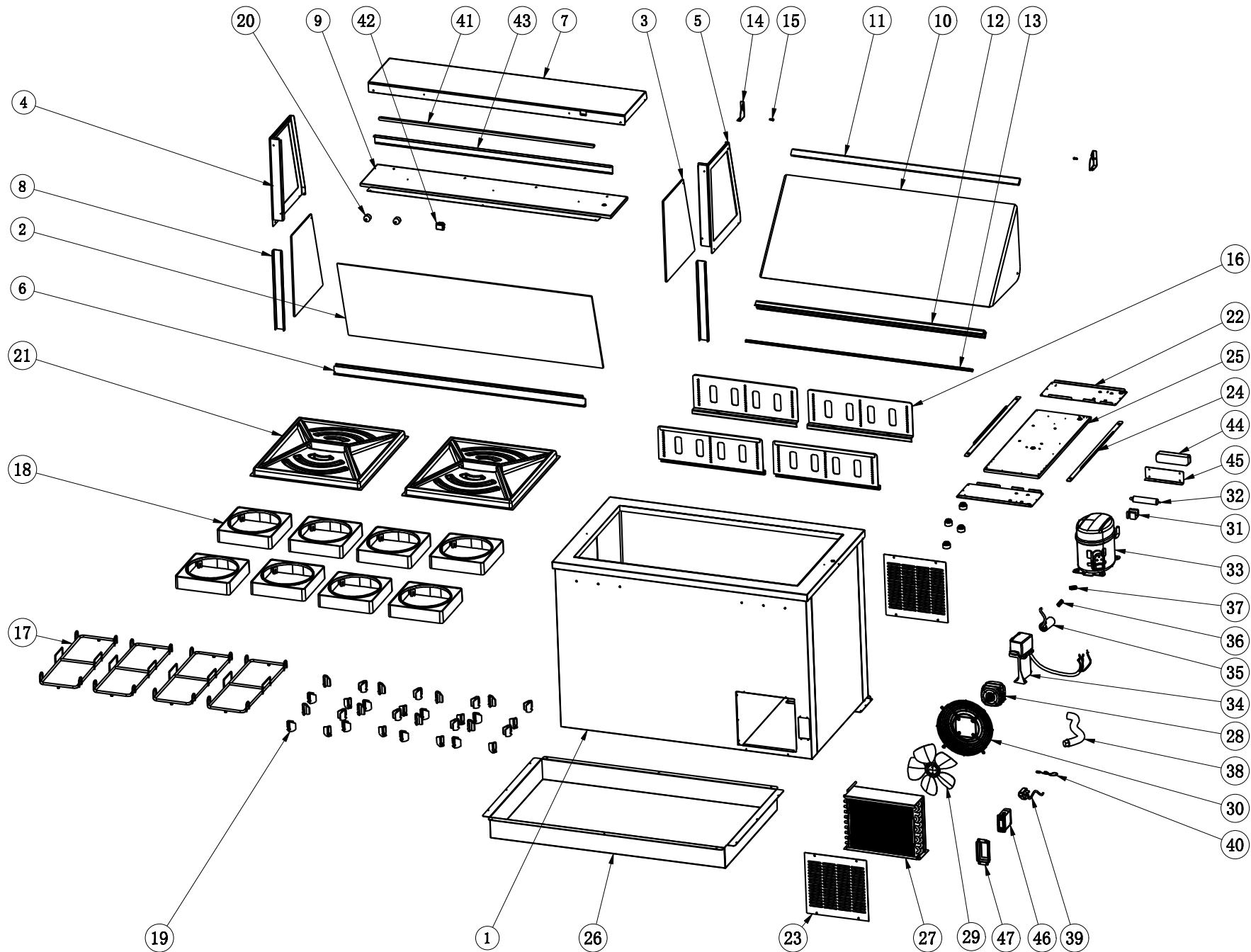




**PARTS LIST FOR
ICE CREAM DIPPING CABINET
MODELS:
EDC18X, EDC26X, EDC35X**



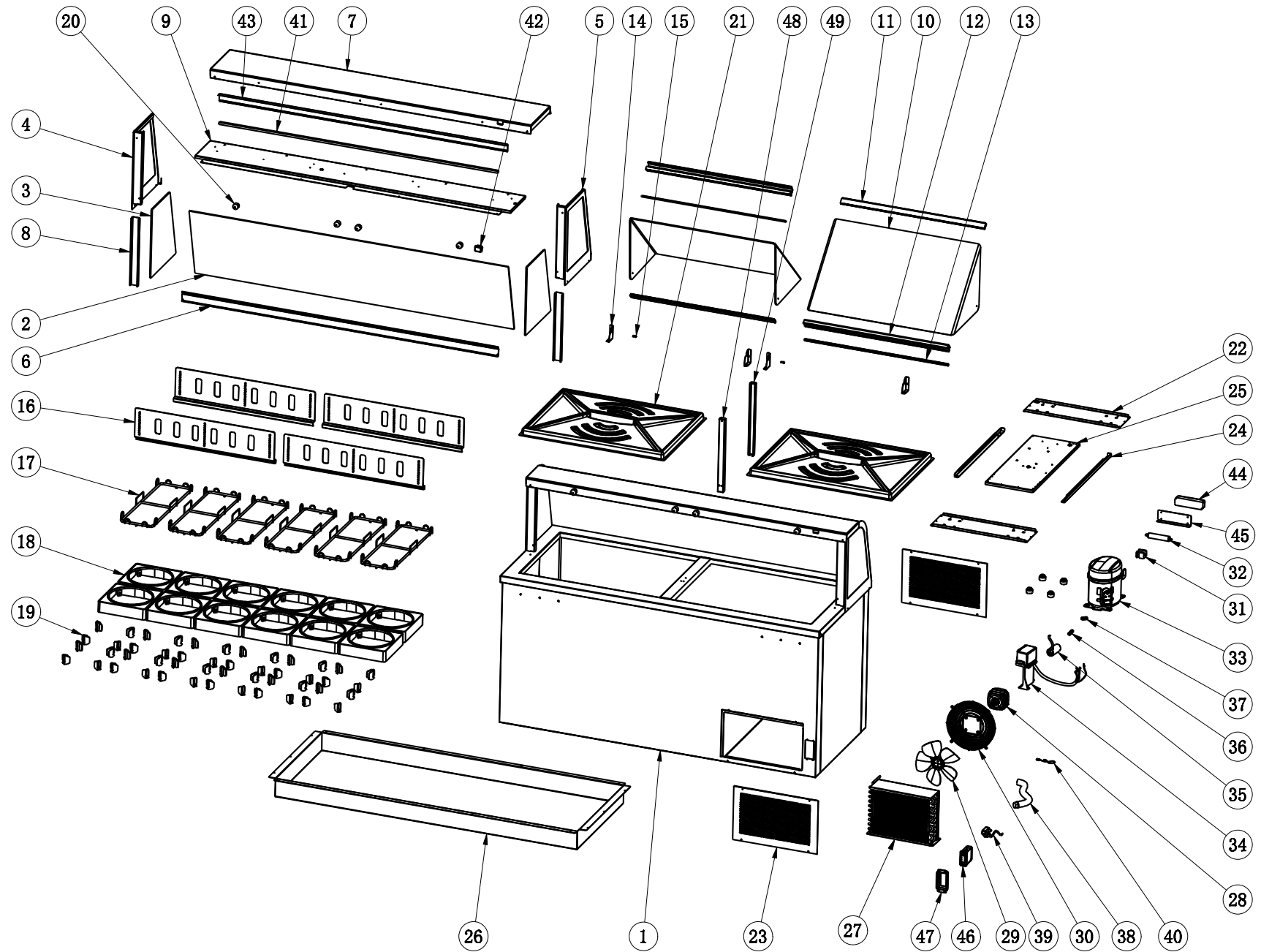
For Parts Call 704-900-2068, Option #2



MODEL EDC18X

NO.	PART #	DESCRIPTION	QTY
1	N/A	CABINET	1
2	XDPC664594	FRONT GLASS (*)	1
3	XDPC664596	SIDE GLASS LEFT OR RIGHT (*)	2
4	XDPC001340	GLASS FRAME LEFT (*)	1
5	XDPC001341	GLASS FRAME RIGHT (*)	1
6	XDPC001331	BOTTOM FRAME (*)	1
7	XDPC001332	TOP COVER (*)	1
8	XDPC001344	L&R SIDE BRACKET (*)	2
9	XDPC001333	JB OF WORKTOP (*)	1
10	XDPC690232	PAN COVER	1
11	XDPC020303	TOP BAR	1
12	XDPC020305	BOTTOM BAR (*)	1
13	XDPC130014	RUBBER PAD	1
14	XDPC001346	HINGE	2
15	XDPC120050	HINGE PIN	2
16	(*)	SHELF RAIL PLATE	4
17	XDPC013178	SHELF	4
18	XDPC690224	BUCKET HOLDER (10" X 10" X 2.5")	8
19	XDPC130012	SUPPORT TAB	32
20	XSBC01001	REAR SPACER	2
21	XDPC690222	TUB COVER	2
22	N/A	SUPPORT BOARD OF FEET	2
23	XCGC001349	CONDENSER GRILL COVER (*)	2
24	N/A	COMPRESSOR UNIT TRACK	2
25	N/A	COMPRESSOR UNIT INSTALLATION BOARD	1
26	N/A	BASE PAN	1
27	X17303080202	CONDENSER COIL	1
28	X22752520003	CONDENSER FAN MOTOR	1
29	XEFMB023	BLADE OF CONDENSER FAN MOTOR	1
30	X12504050002	FAN COVER	1
31	N/A	FILTER DRIER BRACKET	1
32	XX-H00341	FILTER DRIER	1
33	XX-HC0004	COMPRESSOR (NEU2155U/110VAC/R290)	1
34	XX-STARTKITC5	START KIT FOR NEU2155U	1
35		SEE #34	1
36		SEE #34	1
37		SEE #34	1
38	XX-DT0135	DRAIN HOSE	1
39	XX-2194686	POWER CORD SET (14AWG, NEMA 5-15P) 8'	1
40	XX-THT002	TEMPERATURE SENSOR OF CABINET INSIDE	1
41	XLED410070	LED LIGHT	1
42	X17749180002	LIGHT SWITCH	1
43	N/A	LIGHT BAFFLE	1
44	X22753530009	LED POWER SUPPLY	1
45	N/A	TRANSFORMER MOUNTING PLATE	1
46	X17505210058	THERMOSTAT (XR02CX-4N1F1)	1
47	XWPC001355	THERMOSTAT COVER	1

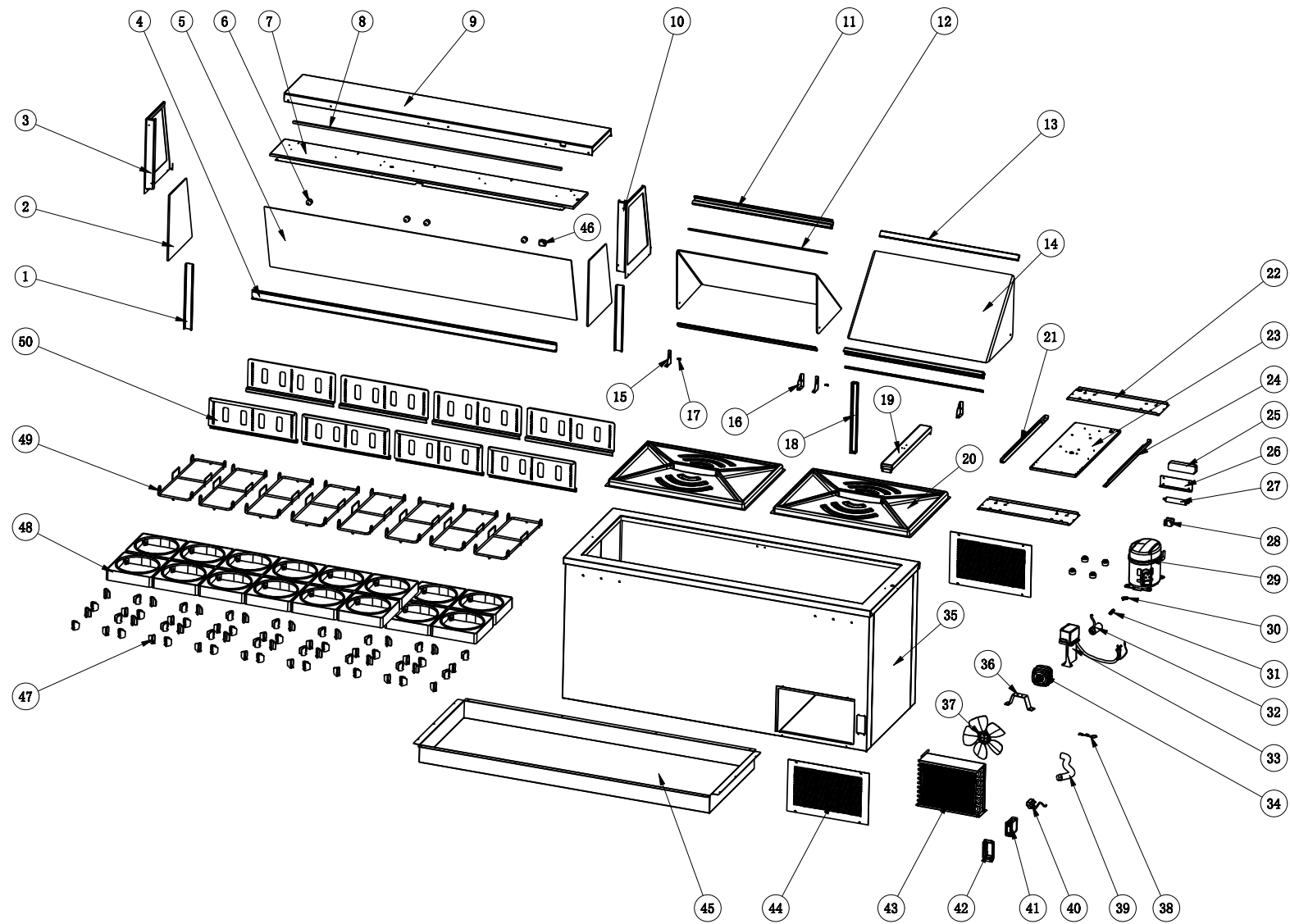
(*) Non Stocking Part



MODEL EDC26X

NO.	PART #	DESCRIPTION	QTY
1	N/A	CABINET	1
2	XDPC664594	FRONT GLASS (*)	1
3	XDPC664596	SIDE GLASS LEFT OR RIGHT (*)	2
4	XDPC001340	GLASS FRAME LEFT (*)	1
5	XDPC001341	GLASS FRAME RIGHT (*)	1
6	XDPC001331	BOTTOM FRAME (*)	1
7	XDPC001332	TOP COVER (*)	1
8	XDPC001344	L&R SIDE BRACKET (*)	2
9	XDPC001333	JB OF WORKTOP (*)	1
10	XDPC690232	PAN COVER	1
11	XDPC020303	TOP BAR	1
12	XDPC020305	BOTTOM BAR (*)	1
13	XDPC130014	RUBBER PAD	1
14	XDPC001346	HINGE	2
15	XDPC120050	HINGE PIN	2
16	(*)	SHELF RAIL PLATE	4
17	XDPC013178	SHELF	4
18	XDPC690224	BUCKET HOLDER (10" X 10" X 2.5")	8
19	XDPC130012	SUPPORT TAB	32
20	XSBC01001	REAR SPACER	2
21	XDPC690222	TUB COVER	2
22	N/A	SUPPORT BOARD OF FEET	2
23	XCGC001349	CONDENSER GRILL COVER (*)	2
24	N/A	COMPRESSOR UNIT TRACK	2
25	N/A	COMPRESSOR UNIT INSTALLATION BOARD	1
26	N/A	BASE PAN	1
27	X17303080250	CONDENSER COIL	1
28	X22752520003	CONDENSER FAN MOTOR	1
29	XEFMB023	BLADE OF CONDENSER FAN MOTOR	1
30	X12504050002	FAN COVER	1
31	N/A	FILTER DRIER BRACKET	1
32	XX-H00341	FILTER DRIER	1
33	XX-HC0004	COMPRESSOR (NEU2155U/110VAC/R290)	1
34	XX-STARTKITC5	START KIT (FOR NEU2155U)	1
35		SEE #34	1
36		SEE #34	1
37		SEE #34	1
38	XX-DT0135	DRAIN HOSE	1
39	XX-2194686	POWER CORD SET (14AWG, NEMA 5-15P) 8'	1
40	XX-THT002	TEMPERATURE SENSOR OF CABINET INSIDE	1
41	XLED410070	LED LIGHT	1
42	X17749180002	LIGHT SWITCH	1
43	N/A	LIGHT BAFFLE	1
44	X22753530009	LED POWER SUPPLY	1
45	N/A	TRANSFORMER MOUNTING PLATE	1
46	X17505210058	THERMOSTAT (XR02CX-4N1F1)	1
47	XWPC001355	THERMOSTAT COVER	1

(*) Non Stocking Part



MODEL EDC35X

NO.	PART #	DESCRIPTION	QTY
1	XDPC001344	L&R SIDE BRACKET (*)	2
2	XDPC664596	SIDE GLASS LEFT OR RIGHT (*)	2
3	XDPC001340	GLASS FRAME LEFT (*)	1
4	XDPC002112	BOTTOM FRAME (*)	1
5	XDPC665932	FRONT GLASS (*)	1
6	XSBC01001	REAR SPACER	4
7	XDPC002113	JB OF WORKTOP (*)	1
8	XLED410070	LED LIGHT	1
9	XDPC002114	TOP COVER (*)	1
10	XDPC001341	GLASS FRAME RIGHT (*)	1
11	XDPC020306	BOTTOM BAR (*)	2
12	XDPC130025	GASKET	2
13	XDPC020303	TOP BAR	2
14	XDPC690232	PAN COVER	2
15	XDPC002115	HINGE - LEFT	2
16	XDPC002116	HINGE - RIGHT	2
17	XDPC120050	HINGE PIN	4
18	N/A	MILLDLE BEAM	1
19	N/A	CROSS BEAM	1
20	XDPC690326	TUB COVER	2
21	N/A	TRACK - LEFT	1
22	N/A	SUPPORT BOARD OF FEET	2
23	N/A	COMPRESSOR UNIT INSTALLATION BOARD	1
24	N/A	TRACK - RIGHT	1
25	X22753530009	LED POWER SUPPLY	1
26	N/A	TRANSFORMER MOUNTING PLATE	1
27	XX-H00341	FILTER DRIER	1
28	N/A	FILTER DRIER BRACKET	1
29	XX-HC0015	COMPRESSOR (NPT18LR/115VAC/R290)	1
30	XX-HC0015K	START KIT FOR NPT18LR	1
31		SEE #30	1
32		SEE #30	1
33		SEE #30	1
34	X17701000014	CONDENSER FAN MOTOR	1
35	N/A	CABINET	1
36	XCFM002122	CONDENSER FAN MOUNTING BRACKET (*)	1
37	XEFMB023	BLADE OF CONDENSER FAN MOTOR	1
38	XX-THT002	TEMPERATURE SENSOR OF CABINET INSIDE	1
39	XX-DT0135	DRAIN HOSE	1
40	XX-2194686	POWER CORD SET (14AWG, NEMA 5-15P) 8'	1
41	X17505210058	THERMOSTAT (XR02CX-4N1F1)	1
42	XWPC001355	THERMOSTAT COVER	1
43	X17304080272	CONDENSER COIL	1
44	XCGC001349	CONDENSER GRILL COVER (*)	2
45	N/A	BASE SHEET	4
46	X17749180002	LIGHT SWITCH	1
47	XDPC130012	SUPPORT TAB	64
48	XDPC690224	BUCKET HOLDER (10" X 10" X 2.5")	16
49	XDPC013178	SHELF	8
50	(*)	SHELF RAIL PLATE	8

(*) Non Stocking Part



**PARTS LIST FOR
ICE CREAM DIPPING CABINET
MODELS:
EDC18X, EDC26X, EDC35X**



For Parts Call 704-900-2068, Option #2