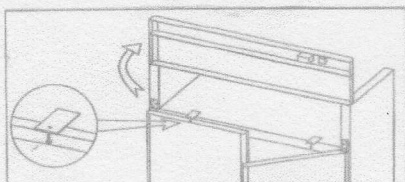


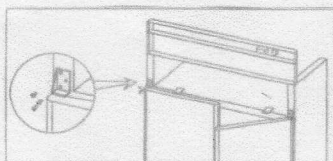


INSTRUCTIONS FOR
REVERSING DOOR ON MODELS
ENTRÉE CR1-CF1 & CENTAUR CSD-1DR-BAL, CSD-1DF-BAL
CSD-1DR-TSI, CSD-1DF-TSI

Step 1 Open the top shroud and swing it up until it rest on the top of the unit.

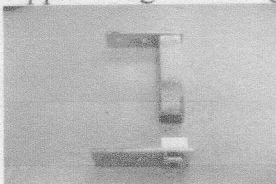


Step 2 Open door to about 100-110 Degrees until the door remains open.



Step 3 Remove the screws holding the upper hinge bracket to cabinet and the 2 screws holding the hinge cartridge to door. Remove the hinge cartridge out of door. You can now remove door from the cabinet.

Upper Hinge Cartridge

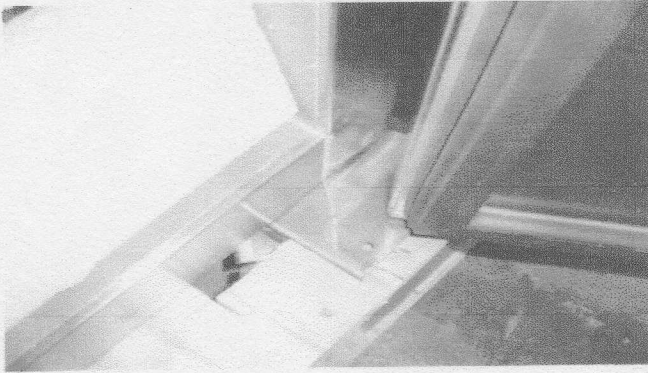


Lower Hinge Axis

These can be removed the 2 screws that attach it to the door and lift them out of the door.

Step 4 Turn the door up side and re-insert the Upper Hinge Cartridge in the top of door and attach with the 2 screws (which was prior the bottom).

Step 5 Remove the Lower Hinge Axis from the Bottom Hinge Bracket



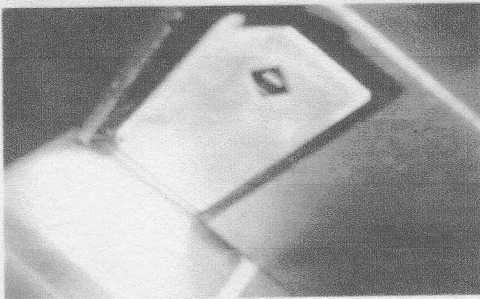
Lower Hinge Bracket(Note the extra hole)

The Lower Hinge Axis will be mounted in this hole once move the to left side.

Step 6 Re-insert the Lower Hinge Axis into the bottom of the door and attach with the 2 screws

Step 7 Remove the lower hinge bracket that is attached to the bottom of the cabinet. This will be moved to left side of cabinet. Screw holes are pre-drilled in the bottom of the cabinet for mounting.

Note: You'll not have to move the upper hinge bracket; as the Upper Left Hinge Bracket is pre-mounted to the cabinet. You can re-install the Upper Right Hinge bracket back on the cabinet.



Upper Left Hinge Bracket pre-mounted to Cabinet

Step 8 With upper hinge cartridge re-attached to the door place a wrench on the square shaft and turn it approximately 120 degree in the direction the door will be closing. The hinge is now preloaded and ready for attaching the upper hinge bracket.

Step 9 Remove the Upper left Hinge Bracket from the cabinet and holding the door at about 100 degrees from the cabinet insert the Upper Left Hinge Bracket over the square shaft of the Hinge Cartridge. The back of the bracket with the 3 screw holes should be face the cabinet.

Step 10 Re-attach the door to the cabinet and make sure it is level and the gasket is sealed to the cabinet, also make sure the top of the door is pushing up the light switch.